



How to map a drive for Windows 10

7/25/2018

Step 1

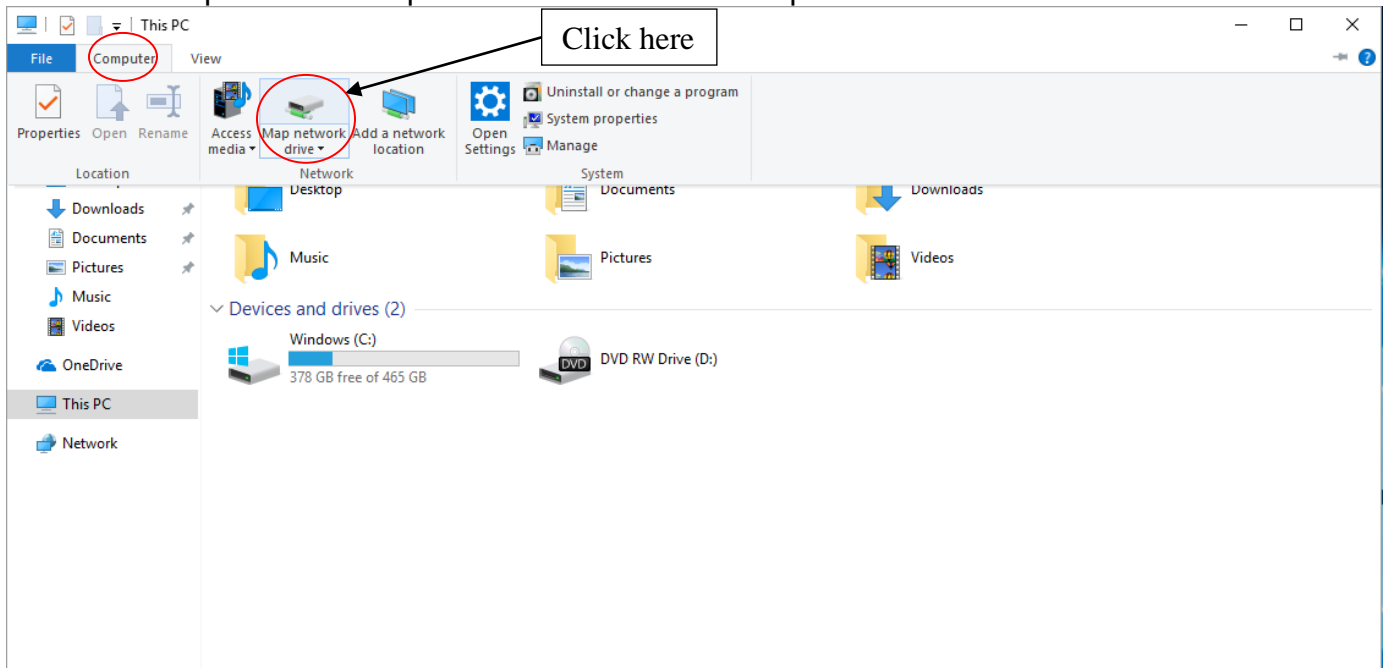
To begin mapping a drive, open up "This PC" by clicking the folder icon in the bottom left hand corner of your screen and begin typing 'This PC'





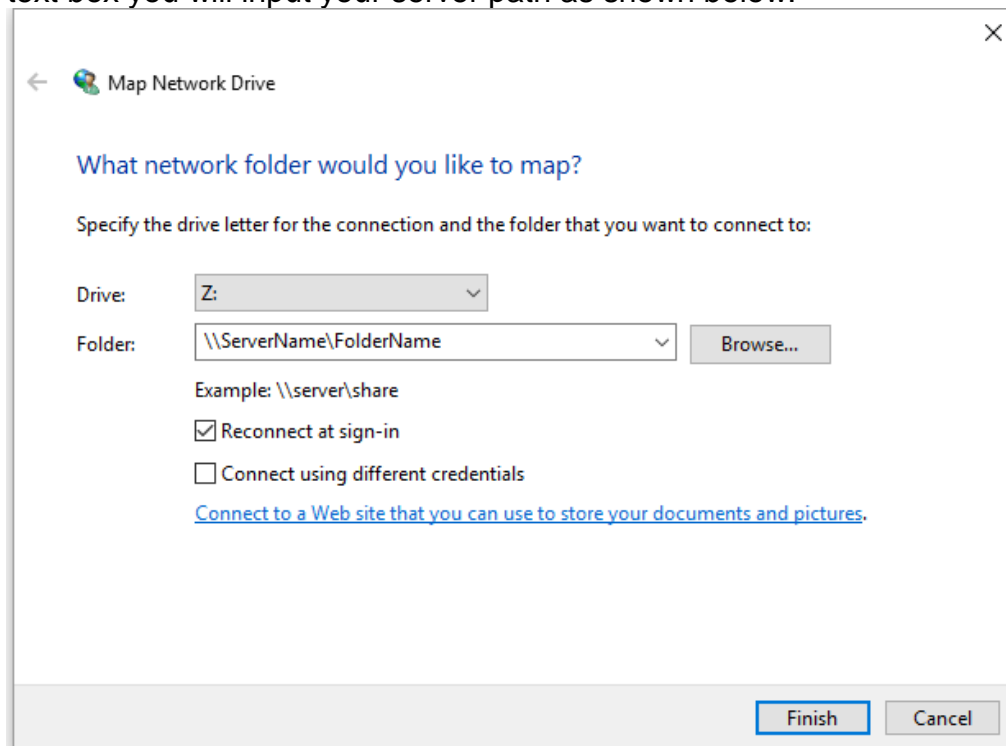
Step 2

Click on 'Computer' in the top bar and then click on 'Map network Drive'.



Step 3

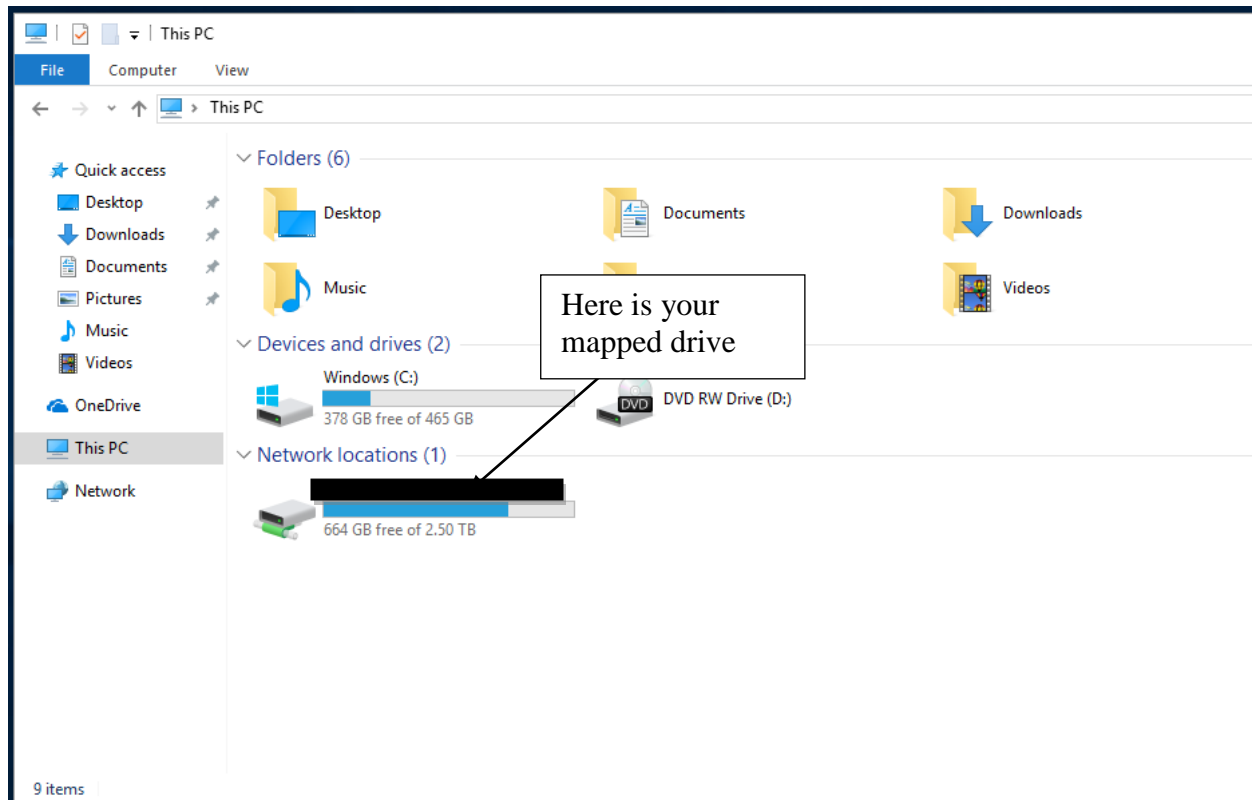
In the window that choose a letter that will identify your drive on this PC. In the **Folder** text box you will input your server path as shown below.





Step 4

After clicking finish, your newly mapped drive will be under 'Network Locations'.



Reporting Problems

If you have any problems during the installation or use of the VPN client, please email security@csuohio.edu and include a thorough description of the problem (attaching screen prints would be helpful).