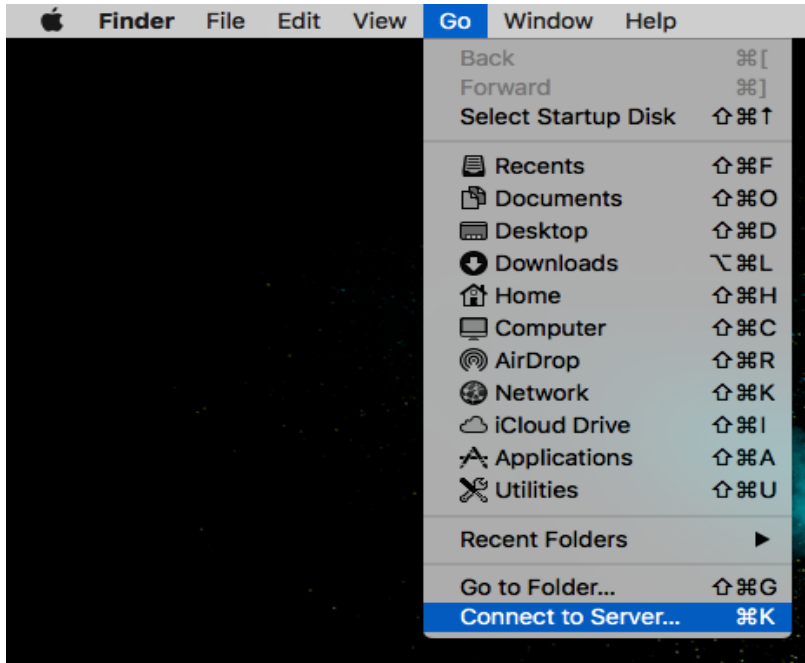


# How to map a drive for Mac OSX

7/19/2018

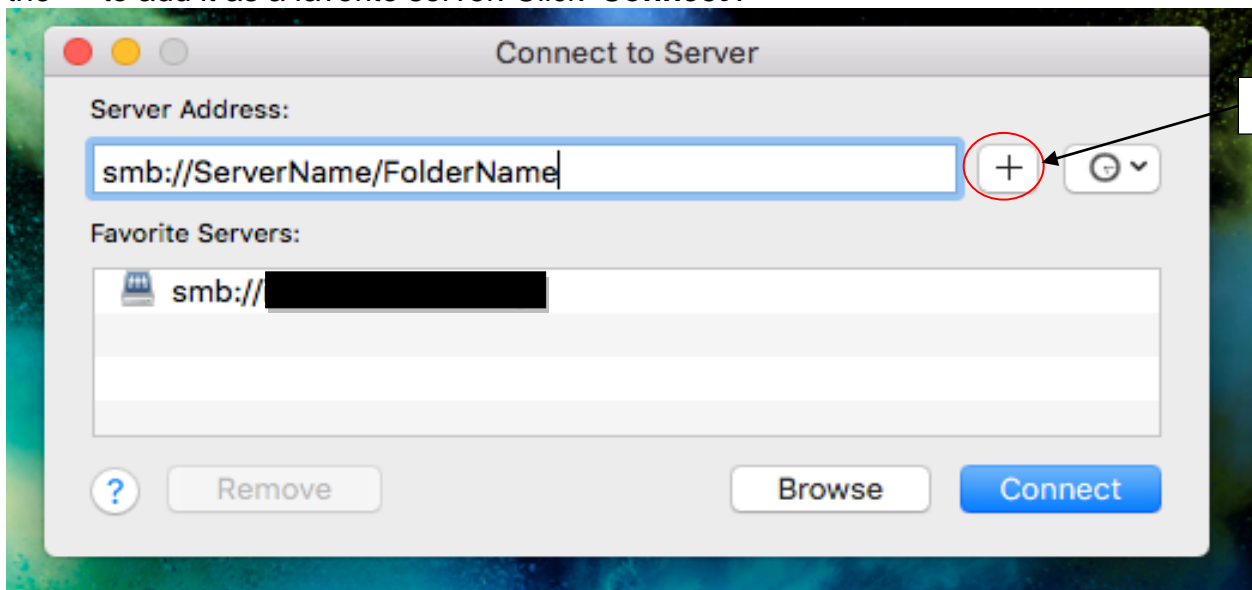
## Step 1

To begin mapping a drive, click on 'Go' in the top bar while you are at your desktop. Then select 'Connect to Server...'



## Step 2

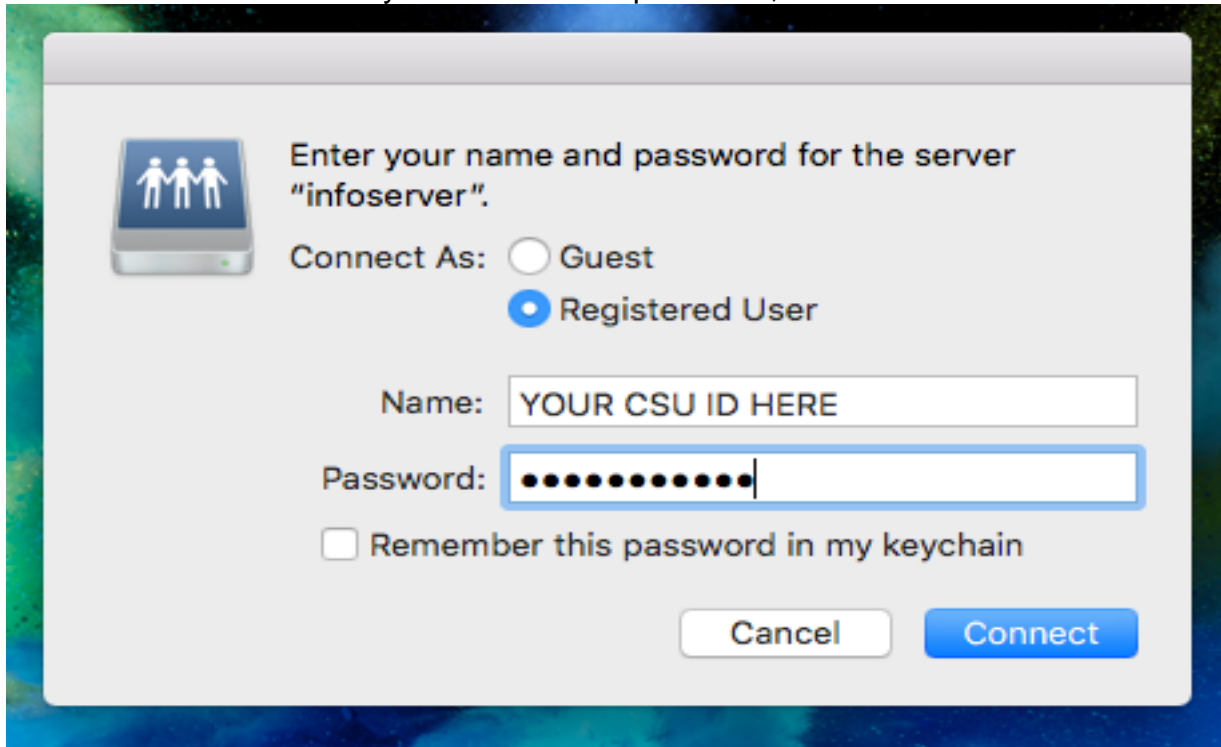
In the Server address box, type in "smb://ServerName/FolderName" and then click on the '+' to add it as a favorite server. Click 'Connect'.





### Step 3

You will be asked to enter your CSU ID and password, then click **Connect**.



After clicking **Connect**, your newly mapped drive will open up and be listed under 'Favorite Servers'.

### Reporting Problems

If you have any problems during the installation or use of the VPN client, please email [security@csuohio.edu](mailto:security@csuohio.edu) and include a thorough description of the problem (attaching screen prints would be helpful).