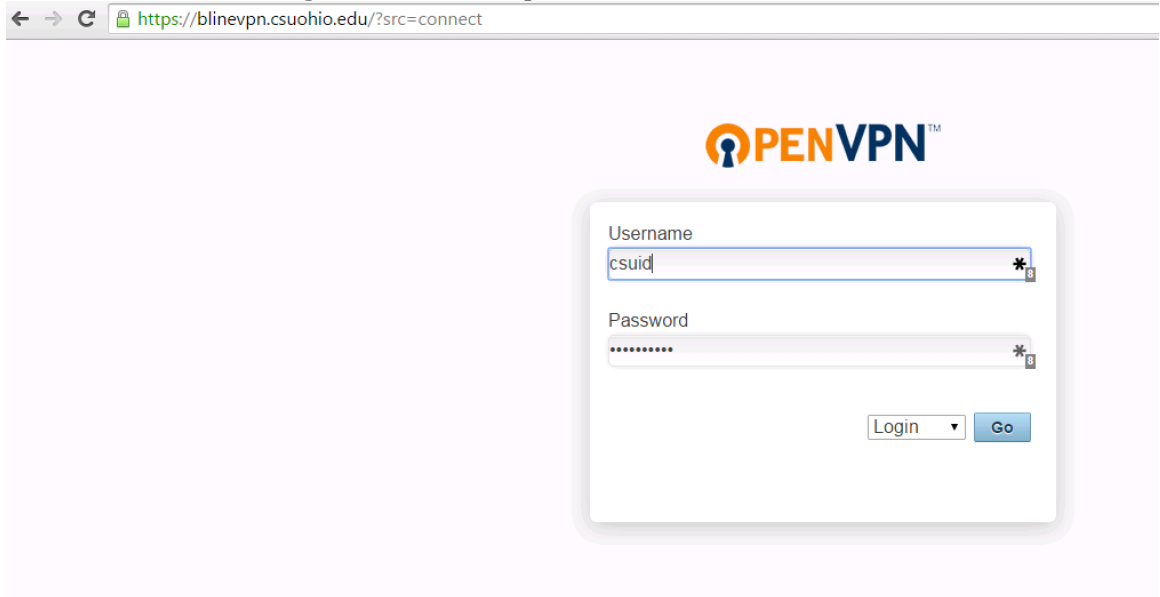


## B-LINE VPN

1. In your favorite browser, navigate to <https://blinevpn.csuohio.edu>
2. Login using your csuid # and campuspass password
3. Make sure to select login from the dropdown



← → ↻ <https://blinevpn.csuohio.edu/?src=connect>

**OPENVPN™**

Username  
csuid \*

Password  
\*\*\*\*\* \*

Login Go

4. Once logged in select your appropriate operating system from the list.



**OPENVPN™**

Connect Logout

To download the OpenVPN Connect app, please choose a platform below

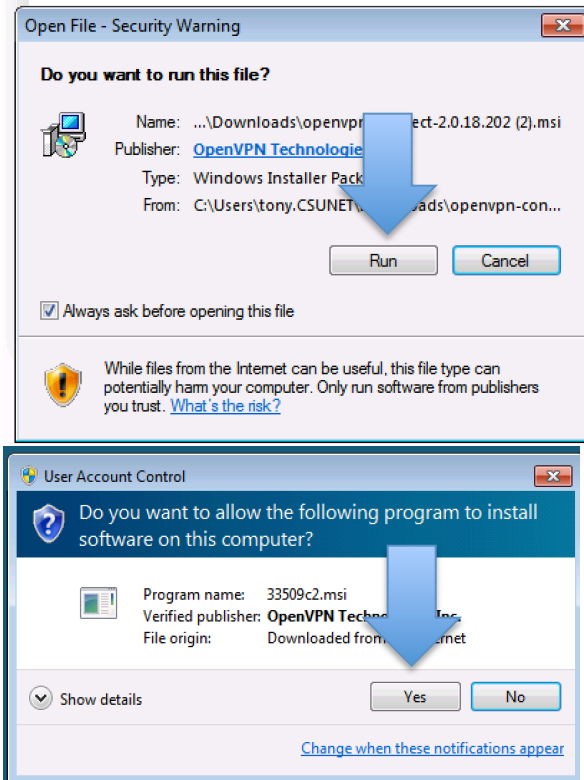
- [OpenVPN Connect for Windows](#)
- [OpenVPN Connect for Mac OS X](#)
- [OpenVPN Connect for Android](#)
- [OpenVPN Connect for iOS](#)
- [OpenVPN for Linux](#)

Connection profiles can be downloaded for:

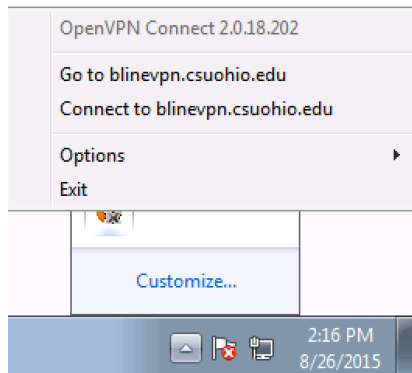
- [Anyone at this server \(server-locked profile\)](#)
- [Yourself \(user-locked profile\)](#)

5. This will download the installer package. Run the installer and agree to the UAC prompts:

# B-LINE VPN



6. Once installed you should see a new tray icon. Right click and select the connect icon

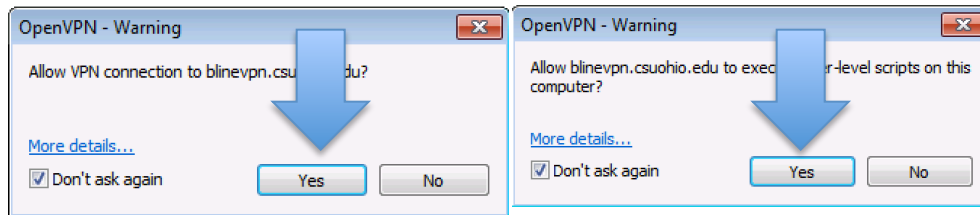


7. Connect with your CSU credentials when prompted.

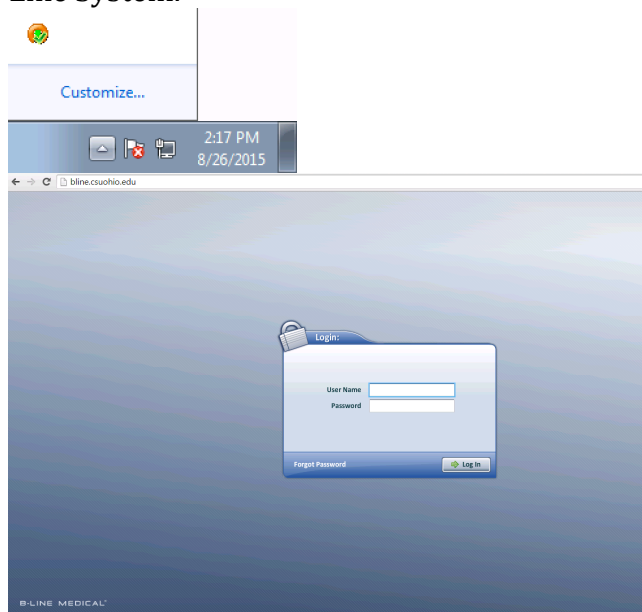


# B-LINE VPN

8. Agree to the initial connection prompts and select the option not to continue prompting in the future.



9. Once connected the icon will turn green and you will be able to access the B-Line System.



10. To disconnect, simply right click the Openvpn icon and disconnect.
11. To connect in the future, simply start at step 6.