



CLEVELAND STATE UNIVERSITY CAMPUS SAFETY

2018 ANNUAL REPORT







MESSAGE FROM THE CHIEF

I am pleased to present the 2018 Cleveland State University Campus Safety Annual Report. This report is intended to highlight our accomplishments as well as provide a detailed compilation of statistical information regarding the variety of services we provided to the campus community and beyond.

Through collaborative efforts with our partners both on and off campus, the departments of Campus Safety (University Police, Access Control & Security Systems and Environmental Health and Safety) continue to provide a wide array of services designed to enhance the safety and sense of well-being among CSU's students, faculty and staff. Student success and safety continues to be the number one priority of Campus Safety.

In order to meet the increasing number of requests for safety escorts, the Police Department has hired two new security officers and was funded for the addition of two new vehicles to its fleet. In addition, the University Police Department has recently partnered with Rave Mobile Safety to bring its award winning mobile safety app to the CSU community. This safety app provides students, faculty and staff access to Rave Guardian mobile services, making immediate access to CSU Police a mere button press away!

Besides providing a wide variety of safety services to the campus, we continue to make student success and engagement a focal point of our community outreach initiative. Last fall, we graduated our third FBI Student Academy class. Our partnership with the FBI provides

an excellent opportunity for our students to gain real life experiences to better prepare them for graduation and life after college. These experiences have already proven beneficial to some of our graduates who have pursued public service opportunities with local law enforcement agencies after CSU.

Emergency preparedness and critical incident response planning is a crucial component to law enforcement agencies nationwide. Our campus law enforcement professionals continue to engage in annual training to learn the best practices and techniques in order to handle emergency situations, should they occur. Additionally, we help prepare our campus community for active threat situations through ALICE and RAD training, as well as planned, full-scale exercises designed to engage and involve the entire campus community.

I am extremely proud of our Campus Safety team - sworn, civilian and student staff. These dedicated professionals and students are committed to consistently delivering the best possible safety services to our campus community. It is our goal to continue building our department's relationships through community outreach and feedback in order to provide and improve these essential safety services moving forward.

Sincerely,
Anthony Traska
Interim Chief of Police
Campus Safety Director



POLICE DEPARTMENT

DEPARTMENT-WIDE ACCOMPLISHMENTS

- Student Intern and Auxiliary Officer Program
- FBI Student Academy Partnership
- Partnerships with Federal Bureau of Investigation, Ohio Homeland Security, Ohio Highway Patrol, Cleveland Division of Police, U.S. Secret Service and the Ohio Investigative Unit
- Police coverage for over 500 special events on campus
- Hiring of two Security Officers, one Security Officer Supervisor and two Dispatchers
- Purchase of new vehicles added to fleet
- 81% increase in usage of the Viking Safety Escort service

BY THE NUMBERS

	2017	2018	CHANGE
Dispatched Calls	63918	64762	1.3% increase
Building Checks	16276	16214	.4% decrease
➤ Completed by Police Officers	11815	11691	2% decrease
➤ Completed by Security Officers	4461	4523	1.4% increase
Lot Checks	19006	15127	20.5% decrease
➤ Completed by Police Officers	13214	9804	25.8% decrease
➤ Completed by Security Officers	5792	5323	8.1% decrease
Safety Escorts	10388	18808	81.1% increase
➤ Completed by Police Officers	3518	657	81.3% decrease
➤ Completed by Security Officers	6870	12820	86.6% increase
Battery Jumps	358	361	.8% increase
Smoking Complaints	194	97	50% decrease
Crime Prevention Initiative	813	966	18.8% increase
Misdemeanor Warrants	64	38	40.7% decrease
Felony Warrants	17	14	17.7% decrease
Felonious Assaults	0	1	100% increase
Felonious Assaults with a Weapon	0	0	no change
Assaults	7	10	42.9% increase
Aggravated Menacing	1	2	100% increase
Robbery	12	3	75% decrease
Burglary	6	2	66.7% decrease
Disorderly Conduct	13	6	53.9% decrease
Driving Under the Influence	4	10	150% increase
Public Intoxication	21	7	66.7% decrease
Criminal Damaging	53	45	15.1% decrease
Petty Theft	46	34	26.1% decrease
Service Calls - Assisting Another Agency	113	119	5.3% increase
Traffic Tickets	281	205	27.1% decrease
Traffic Stop Warnings	1053	670	36.4% decrease
Misdemeanor Citations	83	66	20.5% decrease
Field Interviews	405	363	10.4% decrease



CRIME PREVENTION UNIT

CSUPD's Crime Prevention Unit is dedicated to educating students, faculty and staff about crime prevention. The Crime Prevention Unit is the Police Department's link to the CSU community. Members of The Crime Prevention Unit work closely with groups and organizations on and off campus by initiating safety awareness programs and events, the efforts of which will help the CSU community recognize, report and deter crime. The Crime Prevention Unit has accomplished the following in 2018:

HIGHLIGHTS

1,500

ALICE (ALERT, LOCKDOWN, INFORM, COUNTER, EVACUATE) TRAINING CLASSES

3

RAPE AGGRESSION DEFENSE (RAD) TRAINING CLASSES

APPROXIMATELY

80

COMMUNITY OUTREACH ACTIVITIES

#BeSafeCLEstate CAMPAIGN

- Rape Aggression Defense (RAD) training class is a comprehensive, internationally known self-defense class for females. The course teaches awareness, prevention, risk reduction, avoidance and hands-on defense training.
- Faculty, staff and students trained in ALICE (Alert, Lockdown, Inform, Counter, Evacuate): an interactive hands-on training that provides options designed to increase chances of survival during an emergency event such as an "active shooter."

- 25 New Employee Orientation sessions
- 35 Student Orientation sessions
- 5 Coffee with a Cop events
- 6 Alcohol Awareness classes
- CSUPD's Annual Safety Fair
- National Night Out Against Crime
- Police Halloween Trick or Treat event
- Shop with a Cop



K-9 UNIT



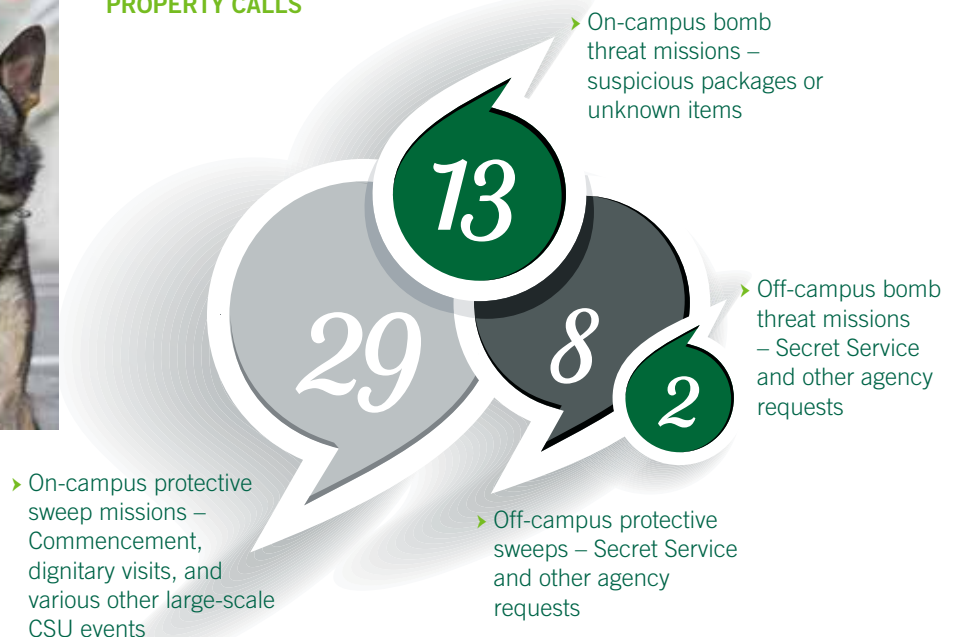
Cleveland State University's Canine Unit consists of one law enforcement officer (P.O. Edward Stoltz) partnered with a highly-trained canine (Canine Rex). The Canine Unit performs some of the same duties and tasks as standard police officers. They patrol the campus community to prevent and respond to crimes, perform investigations, locate and arrest perpetrators and detect dangerous explosives. The Canine Unit has accomplished the following in 2018:

HIGHLIGHTS

TRAINING AND CERTIFICATIONS

- › Explosive Detection State Certification – OPOTA
- › FBI/ATF Canine Specialized Homemade Explosives Training with Peroxide Based Explosives
- › Emergency management explosive response exercises
- › Ohio Intelligence Liaison Officer Threat Assessment Training
- › Weekly patrol work and explosive detection training – Ohio Department of Homeland Security

52 MISSIONS – PROTECTIVE SWEEPS, BOMB THREATS OR UNATTENDED PROPERTY CALLS



ACCESS CONTROL & FIRE SAFETY & SECURITY SYSTEMS



The Access Control, Emergency Notification, Fire Safety, Asset Security and Video Surveillance Systems department had a very eventful and successful 2018. In an effort to improve services and reduce costs, Viking Shield was replaced by RAVE Guardian after much research. The head-end of the program resides in Campus Safety Dispatch. This free mobile application directly links the user's location to campus police. Police will respond through the user's smartphone's geo-location technology once they have pressed the Rave Guardian icon—even if no voice connection is made. This life-saving tool can be downloaded for free today.

A new Video Systems administrator, Justin Jones, was hired, filling the vacant position. Assisting with the selection of a new Video Management System for the University is the top priority among his many responsibilities.

Four ACSS employees earned their certification from the State Fire Marshal's office for Fire Alarms/Detection and Portable Fire Extinguishers. They studied, trained and successfully passed the SFM exams. This now allows greater flexibility of staff responding to and covering events on campus.

Late spring also saw the initial implementation at CSU of proximity card electronic access control hardware and system integration with power assist door operators in the Euclid Commons 4 (EC4) residence hall on two separate suites. This technology allowed two student interns in power wheelchairs and their care gives the opportunity to live, work and study independently on campus. By using a Viking Card, these students were able to access Washkewicz Hall and EC4. Once in EC4, they could access the elevator, the main entry door to their suite and their bedroom doors with no interaction from others, safeguarding their privacy and maintaining their security.

In early summer, the Voice Emergency Notification System (VENS) was extended from the Music building into the Business College and the Urban Affairs Building. This project was funded by each college and was coordinated by AC&SS. This safety improvement allows mass notification announcements to be made in each building using a stand-alone style speaker system linked to the fire alarm command center. In other campus buildings, the VENS uses the fire alarm speaker strobes for announcements. Due to product limitations, Business and Urban fire alarm systems are not able to be retro-fitted with the VENS compatible devices. In addition to improving the safety and security of students, faculty and staff, this working solution saved the University hundreds of thousands of dollars in fire alarm upgrade costs.

ACCESS REQUEST FORMS	2017	2018
Electronic Access Control Assigned	5454	26538*
Keys Cut	710	708
Keys Never Picked Up	89	32
KEYBOX ACCESS		
KARF Access Assigned	357	394
Rings Populated	241	168
EMPLOYEE SEPARATIONS		
Employee Separations	1186	2461**
Key Inventory Generated	357	446
Electronic Access Control Disabled	602	6118*
Key Returns	2163	293
Key Box Disabled	135	189
PROJECT CONSULTS (PER INCIDENT)		
EAC	1254	628
Intrusion	240	192
Video	1465	1833
Locks	480	701
Fire Network	143	169
FIELD SERVICE (ALL INCLUSIVE)		
Electronic Access Control	1652	806
Intrusion	195	199
Key Box	263	202
Video Cameras	2197	2218
Video Recorders	486	626
Locks	947	1327
Client Programming	344	346
Fire Network	103	121
FIRE PREVENTION KPI		
Life Safety Inspections & Re-inspections	240	246
Exit & Emergency Lights	920	263
Fire Extinguishers	13097	13098
Fire Investigations	168	119
Fire Evacuation Drills	7	7
Fire & Sprinkler Systems Testing and Inspections	128	104
Fire Systems Maintenance & Repairs	187	58
Smoke Evacuation Systems Inspections	3	2
Fire Pump Tests	171	100
Burn Permits	39	16
VENS Monthly Test (3 Months Only)	225 (monthly)	92 (monthly)

* Includes all system client activity and newly implemented Add/Drop, per site and per credential

** Now includes student employees and interdepartmental transfers

This year, five additional electronic keyboxes were installed on campus. They are located in Berkman Hall, Urban Affairs, Science Research, the Administration Center and the Middough Building. This allows greater student access to keys across campus.

The Wolstein Center received a much needed upgrade to the security camera network and increased video surveillance in all areas. Music and Communications continued to add to the Electronic Access Control (EAC) system. Seven more rooms were upgraded from obsolete, discontinued keypads to prox card technology. They are anticipating continuing this project with six to ten additional EAC doors in 2019.

The School of Film and Media Arts project and the Washkewicz Hall project required major input and effort from AC&SS in all disciplines: Fire, Electronic Access, keys, cores and keybox and Video Surveillance.



OFFICES OF EMERGENCY MANAGEMENT AND ENVIRONMENTAL HEALTH & SAFETY

2018 ACTIVITIES	2017	2018
Hazardous Materials Incidents	12	6
EHS Responses to Complaints	76	88
Accident Reports Received	28	13
Lab Inspections (Including re-inspection /follow-ups)	1062	1090
Radiation Lab Inspections	34	30
Safety Training Sessions (online)	903	621
New Employee Safety Training	85	152
Lab Safety Training (in person)	361	215
Contractor Safety Training	319	308
Bloodborne Pathogen	12	72
Safety Orientations 12/12	97	304
Construction/Demolition/Renovation Projects Supported	23	27
Research Support	11	4
AED Inspections	432	458
Hazardous Waste Pickups (from Labs)	71	58
Hazardous Waste Removals (off Campus)	3	9
Infectious Waste Pickups (from Labs)	412	461
Infectious Waste Removals (off Campus)	26	26
Radiation Waste Pickups (from Labs)	10	8
Radioisotope Shipments Received	49	51
Burn Permits	8	5
Chemical Purchase Review and Approval	962	717
EHS Work Orders	54	904*
Local Safety Committee meetings	8	15
Grant certificates and environmental compliance	0	2

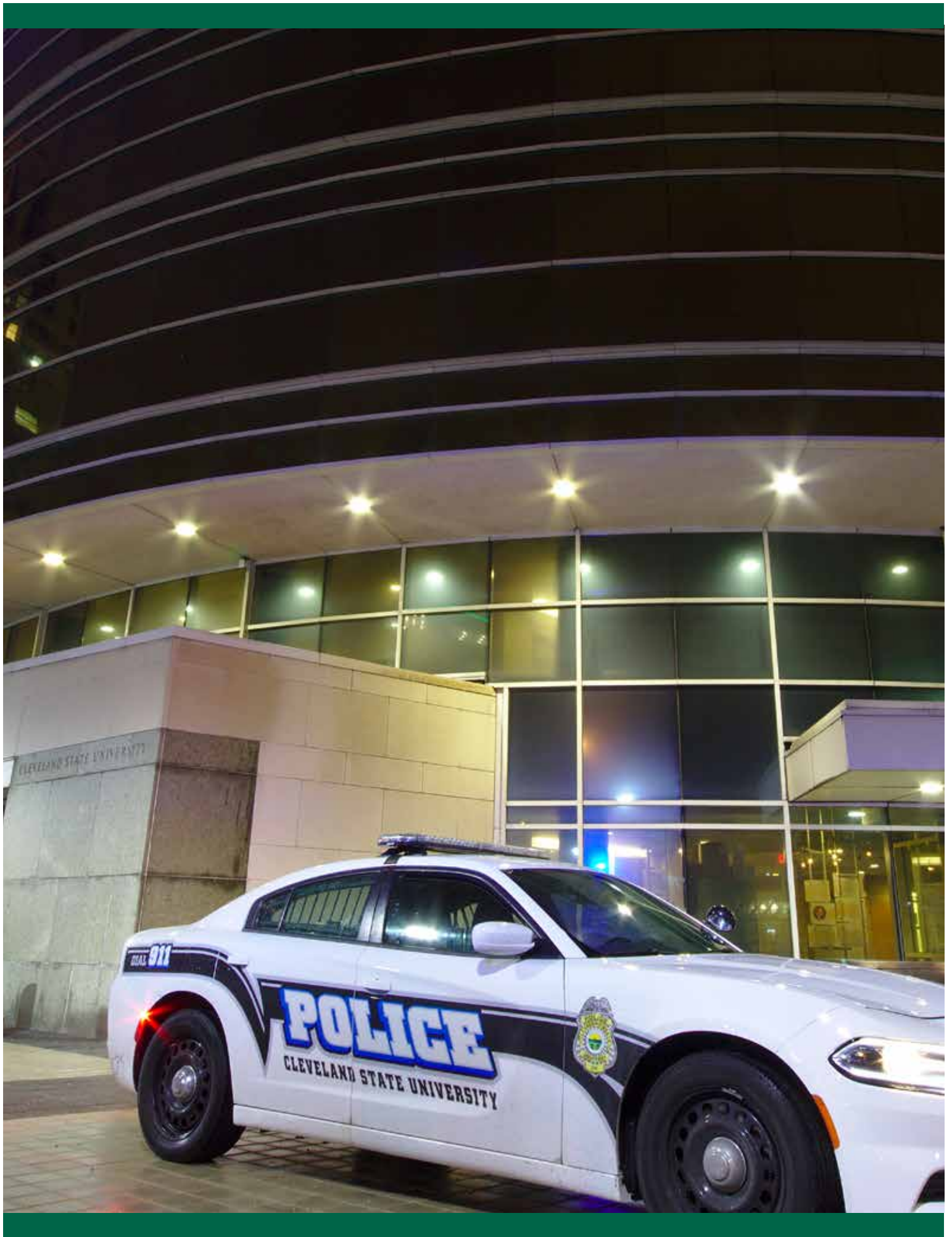
* Started tracking EHS work orders in TMA. No tracking system for prior years.

This past year, the Offices of Emergency Management and Environmental Health & Safety combined efforts to work to preserve a safe and engaged campus community. These offices help support the University's core missions of teaching, research and service by promoting responsible environmental and occupational safety programs to protect the health and safety of students, faculty, staff and visitors while ensuring compliance with all federal, state and local safety and environmental regulations. Members of this team accomplished the follow successes:

- Maintenance of the University's Emergency Operations Plan with Appendices
- Emergency Management Training Exercises – 2 tabletop exercises
- Campus-wide Chemical Inventory
- Update of Environmental Health and Safety Programs
- Utilization of TMA-SYSTEMS for EHS functions
- Creation and BOT approval of CSU Health & Safety Policy
- OSHA compliant and lab safety on-line training for faculty, staff and students
- 92% reduction of days lost from work place accidents (compared to last year)









**CLEVELAND STATE
UNIVERSITY**