

# **McNair Scholars Program connects students to PhD programs**

ÁNGEL L. REYES-RODRÍGUEZ, Ph.D.

DESTINATION PH.D.

# YOU SHOULD GO TO GRAD SCHOOL

You are developing the skills to excel in  
graduate school.

We want to connect you with resources.







DESTINATION PH.D.

# CONTENT TODAY

- Decide to go to grad school
- Be accepted into graduate schools
- McNair can guide and support you
- Apply to the McNair Scholars Program





***List the characteristics of Master's  
and Ph.D. Programs.***

***What themes and differences  
emerge?***

CONSIDER IT,

# APPLY TO PH.D. PROGRAMS

## Reasons to Pursue a Ph.D.

### Passion for Research and Knowledge

- Deep Dive into a Subject: Ph.D. programs allow you to deeply explore a subject you're passionate about.
- Innovative Research: Contribute to cutting-edge research and potentially make groundbreaking discoveries.

### Career Opportunities

- Academic Careers: Essential for becoming a university professor or researcher.
- Specialized Roles: Opens doors to specialized roles in industry, government, and non-profits.
- Leadership Positions: Ph.D. holders are often considered for leadership and high-level positions.





CONSIDER IT,

# APPLY TO PH.D. PROGRAMS

## Reasons to Pursue a Ph.D.

### Personal and Intellectual Growth

- Critical Thinking: Develop advanced critical thinking and problem-solving skills.
- Expertise: Become an expert in your field, gaining deep knowledge and insight.
- Communication Skills: Enhance your ability to communicate complex ideas effectively.

### Personal Fulfillment

- Achievement: Completing a Ph.D. is a significant personal achievement and a testament to perseverance.
- Impact: The potential to make a meaningful impact in your field and society.



## RESOURCES

# PH.D. PROGRAMS: SELECTIVE BUT OFFER KEY RESOURCES

### Tuition

Free or subsidized,  
especially in STEM

### Stipends

Payments to you so you can  
go to school full time;  
Includes assistantships

### Specialization

Small targeted classes;  
research and real-life field  
experience

### You

You drive your career; class  
selection, timing, scope,  
networking.





FIT IS KEY!

# GRAD SCHOOLS APPLICATIONS

## Research Experience

Involvement in research projects, publications, presentations, and any other research-related activities).

## Statement of Purpose (SOP) or Personal Statement

This is your opportunity to explain why you want to pursue a Ph.D., your research interests, and how your background prepares you for this path. It should articulate your academic and professional goals and why the specific program is a good fit for you.





FIT IS KEY!

# GRAD SCHOOLS APPLICATIONS

## Letters of Recommendation

Typically, three letters from professors or professionals who can attest to your academic abilities, research potential, and personal qualities.

## Academic Transcripts

These provide a record of your academic performance and achievements. Admissions committees look for a strong academic record, particularly in relevant fields of study.





FIT IS KEY!

# GRAD SCHOOLS APPLICATIONS

## Curriculum Vitae (CV) or Resume

This document outlines your academic and professional experience, including education, research projects, publications, presentations, and relevant work experience.

## Research Proposal (if required)

Some programs require a detailed research proposal outlining your intended research topic, methodology, and potential impact. This demonstrates your ability to plan and conduct research.





FIT IS KEY!

# GRAD SCHOOLS APPLICATIONS

## Writing Samples

Writing samples showcase your writing ability, critical thinking, and research skills. They should be your best work and relevant to your research interests.

## Standardized Test Scores (e.g., GRE)

Some programs require GRE scores. However, the importance of these scores has been declining in many fields.

## Work Experience

Relevant professional experience can strengthen your application, especially if it involves research or work closely related to your proposed field of study.





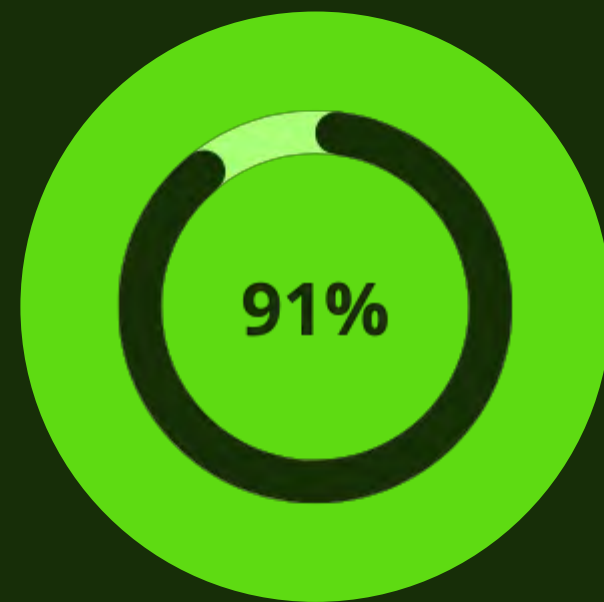
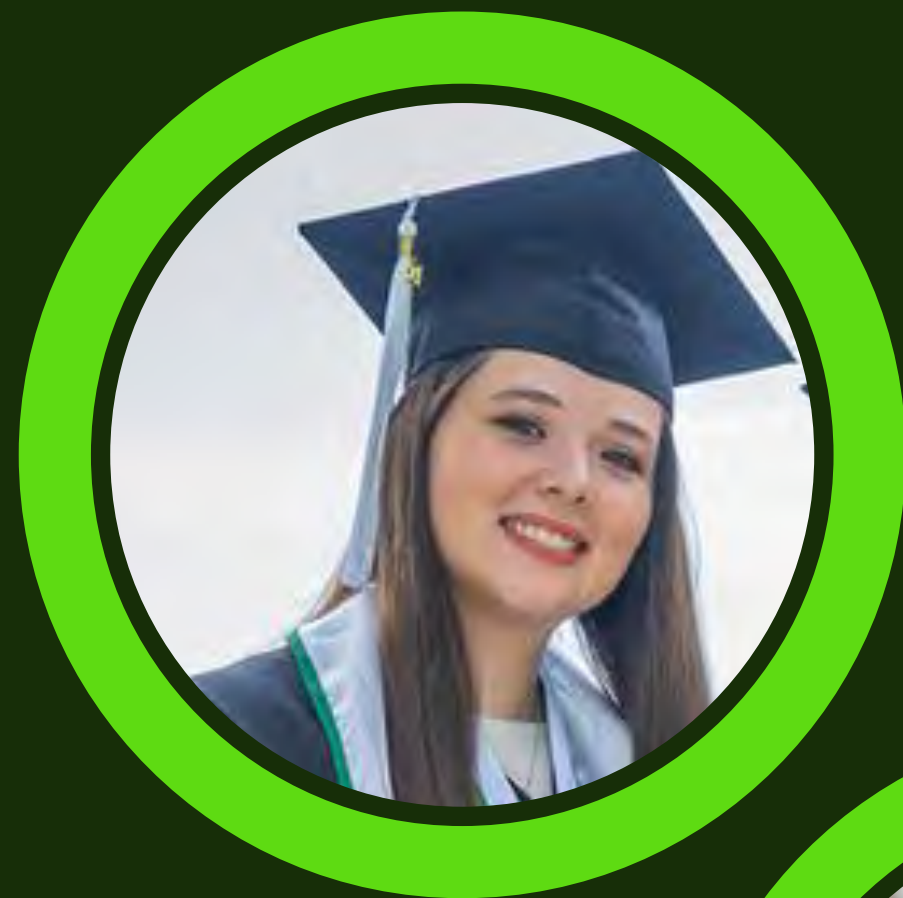
FIT IS KEY!

# GRAD SCHOOLS APPLICATIONS

Relative Importance Summary

- Very High: Statement of Purpose, Letters of Recommendation, Research Experience
- High: Academic Transcripts, CV/Resume, Research Proposal (if required), Writing Samples
- Variable: Standardized Test Scores, Work Experience

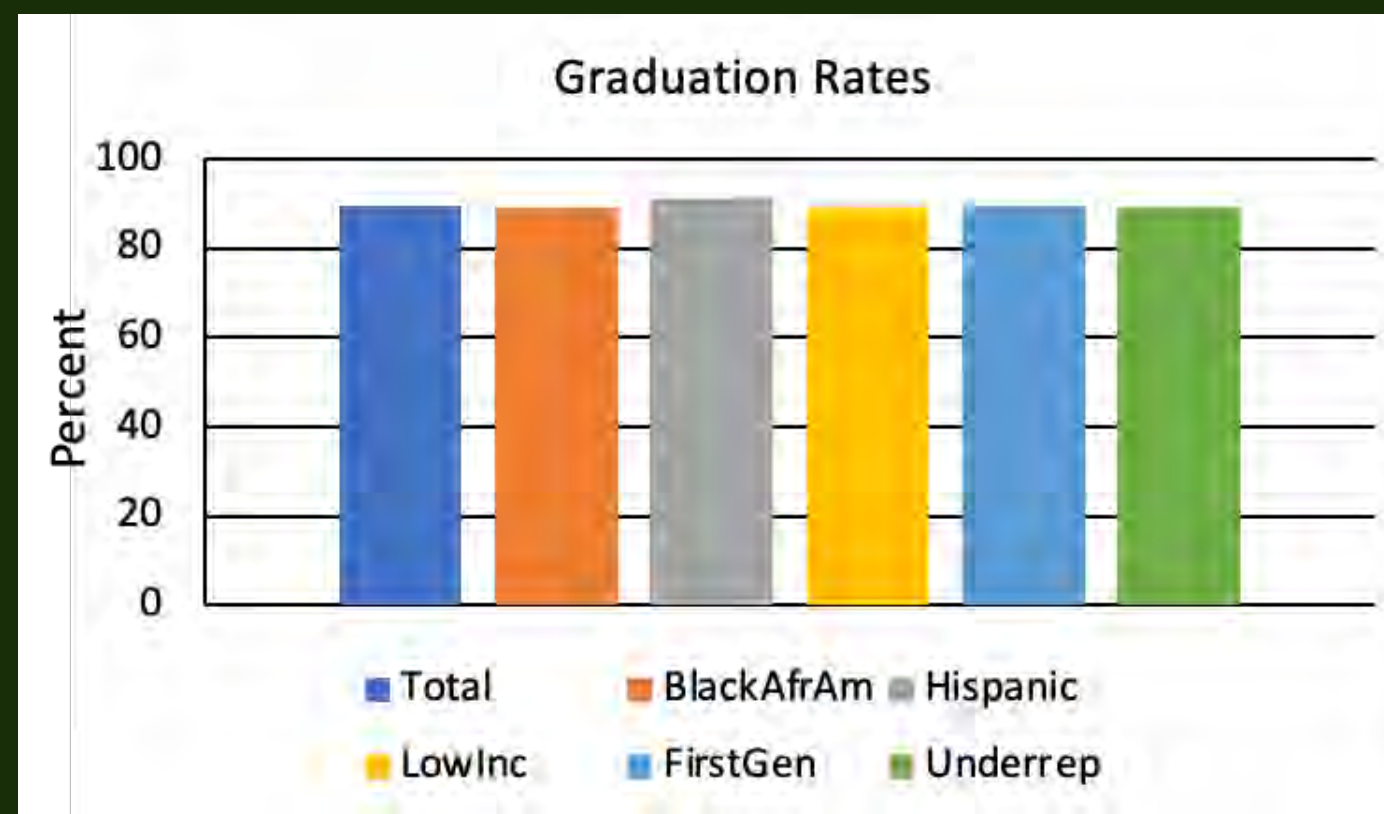




GRAD SCHOOL PREP

# MCNAIR HELPS!

## Equitable Outcomes





GRAD SCHOOL PREP

# MCNAIR HELPS!

## Scholars are accepted into graduate schools

McNair Scholars are commonly accepted with free tuition and assistantships.

## Direct to Ph.D. Options

Students in STEM can skip Masters and go straight to Ph.D. Programs.



HOW DO WE DO IT?

# 3 CORE SERVICES

1

Research

2

Mentorship

3

Career  
Development





CORE SERVICE

# MENTORSHIP



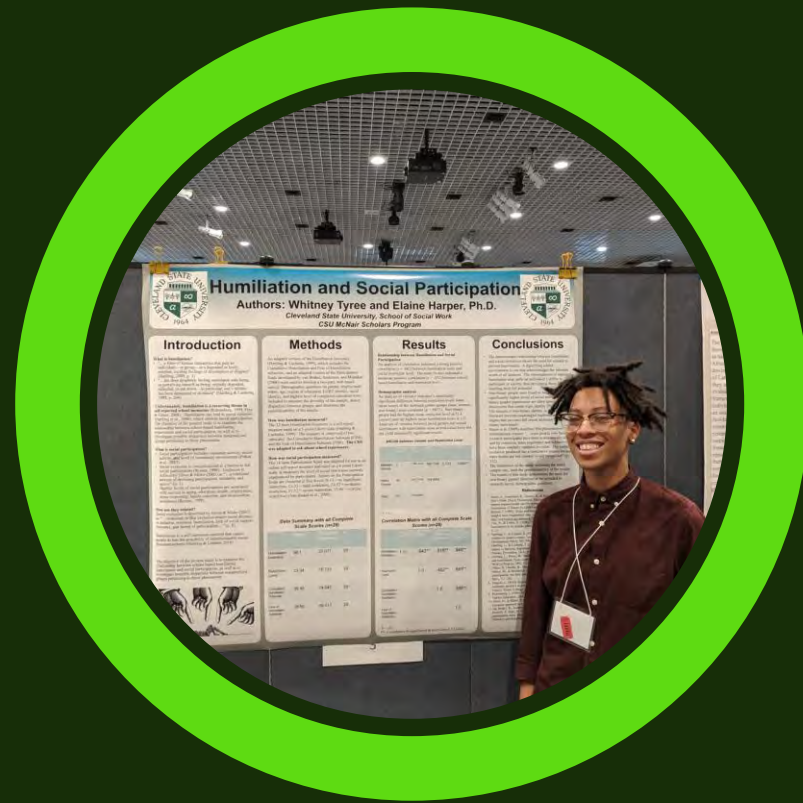


CORE SERVICE

# CAREER DEVELOPMENT



Conference Travel



Presentations



Workshops

ALUMNI SUPPORT

# SUPPORT



Opportunities



Faculty representation



Overall support



SUMMER RESEARCH INSTITUTE

# BENEFITS

**\$2,800**

Baseline payment for  
Summer Research

**Reagents**

Funded for books each  
semester

**Dorms**

McNair funds 2 months of  
dorm "rent"

**Food**

Meals as snacks are  
provided, everyday



FALL AND SPRING

# BENEFITS

**\$400**

Funded for books each semester

## Cultural Events

Dinner and tickets to attend plays, concert, exhibits, etc.

## Networking

Connect with scholars, alumni, faculty, and people in your fields

## Support

Costumized support, from advisors to loaning electronic devices





CONTACT US

**APPLY TODAY**







WE WANT TO HELP YOU!

# CONTACT US



216 802 3391



<https://www.csuohio.edu/mcnair-scholars>



SR 155



[mcnairprogram@csuohio.edu](mailto:mcnairprogram@csuohio.edu)

Program could help you  
graduate school

**TRIO**  
RONALD E. MCNAIR  
POST-BACCALAUREATE  
ACHIEVEMENT PROGRAM

graduate education  
advantaged groups

graduates enroll in  
red to their peers

graduate Education



First generation college students

McNair Scholars Program supports  
undergraduate students who will  
pursue Ph.D. degrees

McNair Scholars Program could help you  
pursue a graduate degree

- First-generation students from low-income families
- Students from underrepresented minority groups in higher ed
  - African American, Hispanic, Native American, Pacific Islander, Native Hawaiians
- GPA of 2.8 or higher
- Plan to pursue a Ph.D. (or MS)