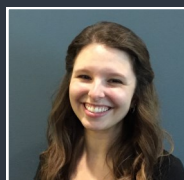


Fall Move-In Newsletter

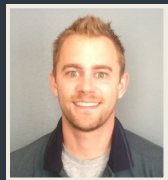
RESIDENCE LIFESTAFF



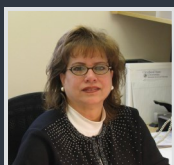
Lynn Ellison
Director



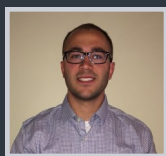
Tess Cardoza-Hawk
Associate Director



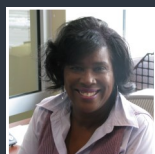
James Banach
Assistant Director of Facilities



Jo-Ann Wytzka
Business Office Manager



Phil Richards
Assistant Director for
Marketing and Leasing



Renee Casey
Front Desk
Receptionist



WE WELCOME YOU!

Hello and welcome to Cleveland State University. We are excited that you have chosen to live on campus! College is more than classes and studying; living on campus allows you an opportunity to belong to a community, form lasting friendships and engage in your overall college experience.

Our department is very proud of the facilities we offer; your safety is our number one priority. Fenn Tower and Euclid Commons are monitored 24 hours a day 7 days a week by staff in the main lobbies.

We are also very proud of the events we plan throughout the year. All of these events allow you a chance to get to know people in your community. Your Resident Assistant will post

What's Next?

Now that you have received your room assignment, you are probably asking yourself, "what do I do next?" It is a good idea to contact your future roommate(s) to discuss who is going to bring what to share in your room. It is also good to share some of your hobbies and interests with your roommate(s) so you can

discover things that you might have in common.

We encourage you to talk to your new roommate(s) throughout so you can begin to coordinate your arrival time and also begin mapping out what you plan to do for move-in day. Sit down and create a game plan with the people that will help you move so that your move-in will go as smoothly as possible.

IMPORTANT DATES TO REMEMBER:

- First Weekday Class: August 27
- Labor Day: September 3
- Columbus Day (no classes): October 9
- Veteran's Day (university holiday):
November 12
- Thanksgiving Recess: November 22-25

flyers about all of the upcoming events, so be sure to keep an eye on their postings.

In addition to the many exciting things we do, we also have a great staff who is here to help with any questions you may have. Our office is open Monday-Friday 8am-5pm. We encourage you to stop by with any questions you may have and we look forward to meeting you!

Check out our webpage at www.csuohio.edu/reslife for some helpful hints on how to get ready for the big day.

If you have questions about your room or your roommate assignment, be sure to call our office at (216) 687-5196 so we can answer your questions.



Move-in Dates:

Honors and Scholars

Friday, August 24

8am-11am

Freshmen, A-J

Friday, August 24

(see website for
specific schedule)

Freshmen, K-Z

Saturday, August 25

(see website for
specific schedule)

Upperclass Students & Transfer Student

Saturday, August 25

2pm-5pm



Saturday, August 25

3:00pm-8:00pm

Parking on Campus



CSU Residents are eligible to purchase one of three types of permits:

- White permits: non-core, perimeter surface lots and South Garage
- Green permits: core garages, a few core surface lots and South Garage
- Prospect Garage: access to Prospect and South Garages

Visit the Parking and Transportation Services website for parking related information: <http://www.csuohio.edu/parking>

Campus Building & Parking Locations



MC– Main Classroom

PG– Prospect Garage

EC– Euclid Commons

FT– Fenn Tower

EG– East Garage

**Brush up on our policies by reading the
2018-2019 Resident Handbook**

EC & FT "Things to Bring" Checklist

- **Dishes:** silverware and microwavable cups, bowls, mugs (service for one), dish soap to clean, can opener.
- **Vacuum and Broom:** The community desk has vacuum cleaners, but having your own broom is more convenient.
- **Paper towels, tissues, toilet paper, etc.**
- **Back-up stock:** it is helpful to stock up on items like soap, toothpaste, detergent, and other things which tend to be expensive at the nearby drug stores.
- **Personal First Aid Kit:** aspirin, band-aids, cold and allergy supplies, etc.
- **Shower Curtain**
- **Multiple Outlet Surge Protector:** must have UL approval.
- **Umbrella:** you'll be walking a lot.
- **Small rug:** tile floors in bathroom can be cold.
- **Closet hangers and over-the-door hooks.**
- **Linens:** towels, washcloths, bed sheets, comforter, pillow, mattress pad. Bed sizes are: Fenn Tower- twin extra long, Euclid Commons private bedroom- full, and Euclid Commons shared bedroom- twin extra long
- **Laundry supplies:** laundry basket, detergent (pods are best), and sewing kit.

(con't)

WHERE DO I UNLOAD MY CAR?

Euclid Commons

Approach campus heading EAST on Euclid Avenue. While your vehicle is being unloaded on E. 24th Street by your family and friends, you will go to the registration area in the courtyard to receive your keys. After you have received your move-in packet, you can meet your family/friends in the courtyard and proceed to your room with your belongings. Once your vehicle is emptied out your family will be directed to park their vehicles in the Prospect Garage.

Both the north and south sides of E. 24th Street will be **30-minute unloading zones** for move in weekend. Euclid Commons residents may also unload their car in the Prospect Garage.

When you arrive on campus, you will be given a parking pass for complimentary garage parking until **9:00pm** on the day you move in. You will have full in-and-out privileges while the pass is valid. After **9:00pm**, you will need to pay to move your car out of the garage.

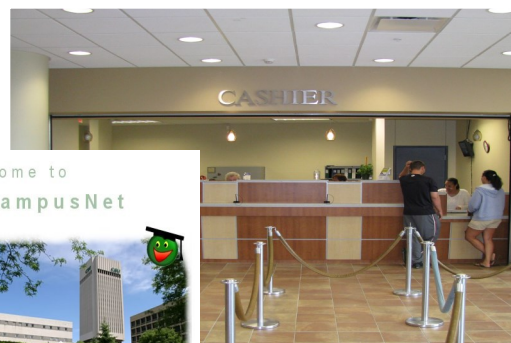
Students should plan to park their car in their academic year lot/garage once done unloading. You will be able to pick up your academic year parking permits on Friday or Saturday. However, if you are unable to get your permit on either of those days, the confirmation permit you received via email will allow you to park in your assigned location starting Friday. Just be sure to print that off before you come to campus and display it as instructed.

Fenn Tower

Approach campus heading WEST on Euclid Ave. While your vehicle is being unloaded on E. 24th Street, you will go inside Fenn Tower to receive your keys. After you receive your move-in packet, you can meet your family/friends and your belongings in the elevator lobby area and proceed to your room. Once your vehicle is emptied out, your family and friends will be directed to park their vehicles in the East Garage.

Where do I make payment for my fall housing?

You must pay for your room fees and meal plan prior to the beginning of each semester. If financial aid has not been credited to your account prior to move-in, you may apply for the Budget Payment Plan. For instructions on how to pay for your room fees and other fees on your CSU account, please visit: <http://www.csuohio.edu/treasury-services/how-pay>



Dining Locations 2018-2019



Health Insurance Requirement

All resident students are required to have health insurance. You have been automatically enrolled in the university's student plan. However, if you have private health insurance, you can apply for a waiver. The health insurance waiver for **DOMESTIC** and **INTERNATIONAL** students is ready, please use the link below, then click on 2018-2019 Cleveland State University Domestic Student Waiver Form:

www.uhcsr.com/csuohio

This must be completed prior to move in. Should you have any questions regarding the waiver, please contact Health and Wellness Services at 216-687-3649.

You've Got Mail!

The Department of Residence Life has its own mail distribution system. Your mailroom key will be distributed during move-in. We accept packages on your behalf. When you receive a package, we will send you an email from reslife@csuohio.edu to notify you that it is ready to pick up. All packages can be picked up from the desk at the Euclid Commons north entrance.

If you live in

Euclid Commons

Fenn Tower

Your mailing address will be:

2450 Euclid Avenue
Euclid Commons Rm. _____
Cleveland, OH 44115

2450 Euclid Avenue
Fenn Tower Rm. _____
Cleveland, OH 44115

Be sure to include both your room number and bed space in your address.

EC & FT "Things to Bring" Checklist Contd.

- **Alarm clock:** you don't want to be late for class.
- **Cell Phone**
- **Microwave (if you do not live in an apartment with a kitchen):** this is the only heating element for food permitted.
- **Pots and pans (if you have a kitchen)**
- **Small refrigerator (if you do not live in an apartment with a kitchen):** you may want to contact your roommate to see who will bring one; you will just need one per room.
- **Cleaning supplies:** bring your own cleaning supplies for your room & bathroom.
- **Waste baskets.**
- **Television and Cable Cords** (make sure the TV has a QAM tuner)
- **Computer:** your computer must have a network card (Ethernet) in it to work with CSU's system.
- **Pictures/Posters and Poster Mounts** (Command Hooks and Strips are recommended)
- **Radio**
- **Movies/DVD's:** For late night movie night.
- **Warm winter coat, boots and gloves**
- **School Supplies:** Pens, pencils, highlighters, notebooks, folders, paper, stapler

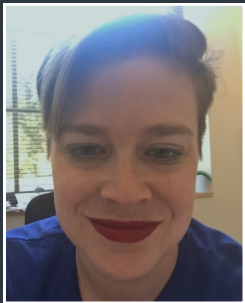
**Meet the
Professional Staff!**



Samantha Sharkey
Euclid Commons RD
216.802.3385



Rebecca Smith
Euclid Commons Asst. RD



Leslie Yetter
Fenn Tower RD
216.687.5305



Faith Beddick
Assistant RD
216.687.5524

Have you completed the required move-in paperwork yet?

Reduce your wait time on move-in day by completing the following forms before August 15:

- Missing Student Policy Notification
- Emergency Contact Card
- Personal Property Waiver
- Package Release
- Immunization Information

www.csuohio.edu/residence-life/move-in-information

Renter's Insurance

Usually, the first time people consider getting some type of insurance, (other than health insurance) is when they are looking into buying a car or a home. While car and home insurance are necessary, renter's insurance is equally as important. Renter's insurance is a type of insurance you take out to protect your personal possessions while you are renting a residence.

Renter's insurance will not only protect your personal items, but can also help in providing temporary housing for you in the interim period if your residence hall becomes damaged. Additionally, renter's insurance will also cover liability or any damage you cause to other people or their property. We have made arrangements with Assurant to provide renter's insurance to our students. Simply visit www.renterscoverage.com to get a quote.

**Make plans to attend your first floor meeting, and
walk over to MagnusFest together!
Saturday, August 25 at 3:00pm**