



**COLLEGE OF SCIENCES AND  
HEALTH PROFESSIONS  
2017-2018**



Cleveland State University

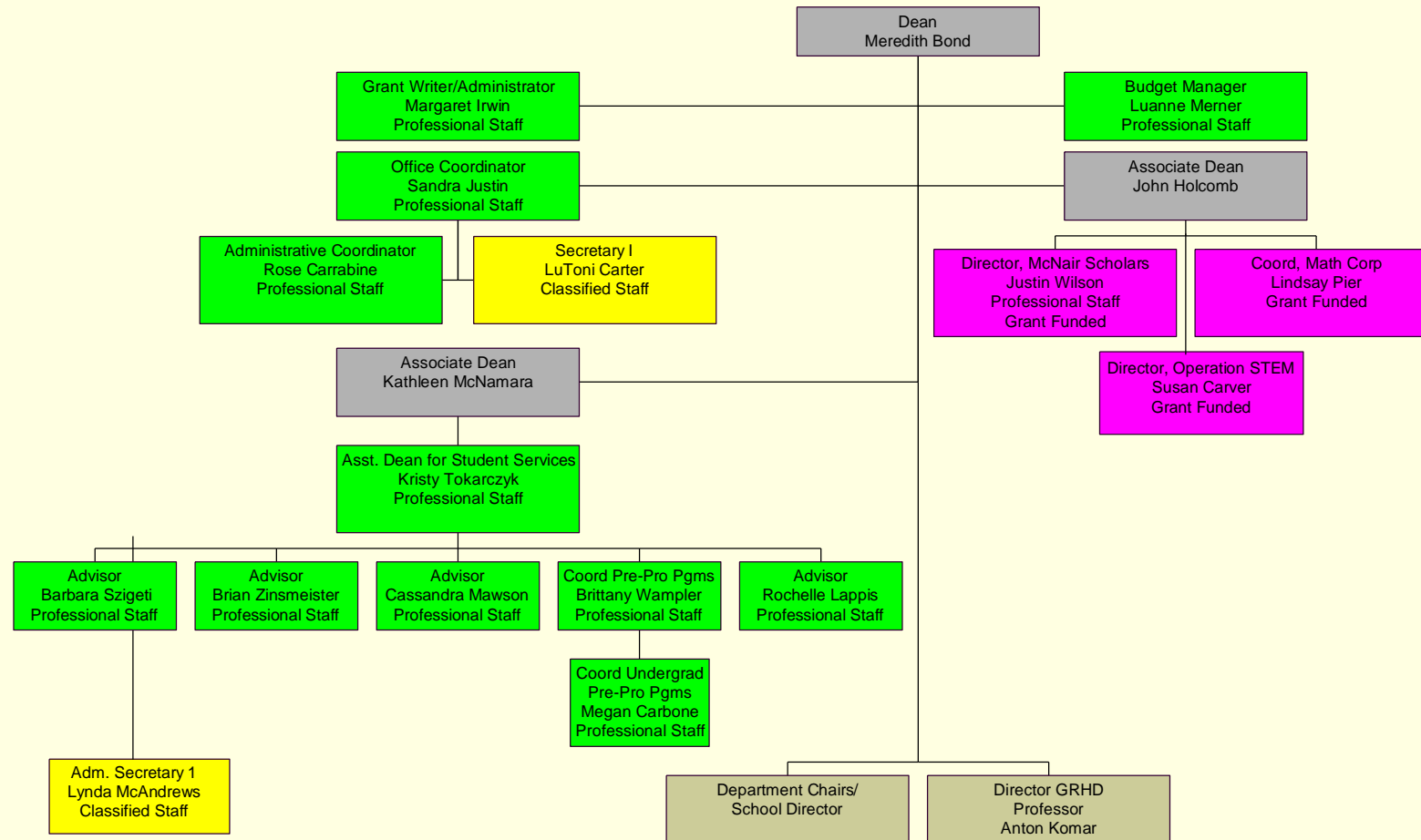
# KEY

---

- Faculty / Administration
- College Lecturers
- Visiting
- Professional Staff
- Classified Staff
- Grant Funded
- Part-Time
- Emeritus
- Adjuncts

# College of Sciences and Health Professions

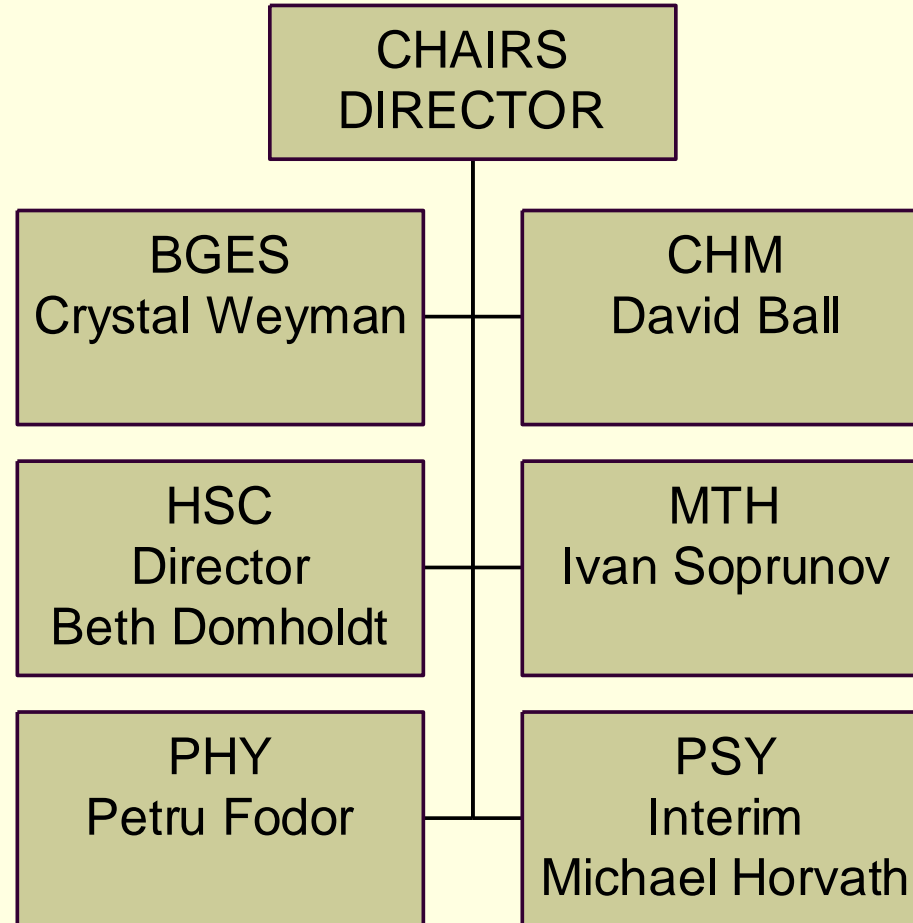
## Dean's Office



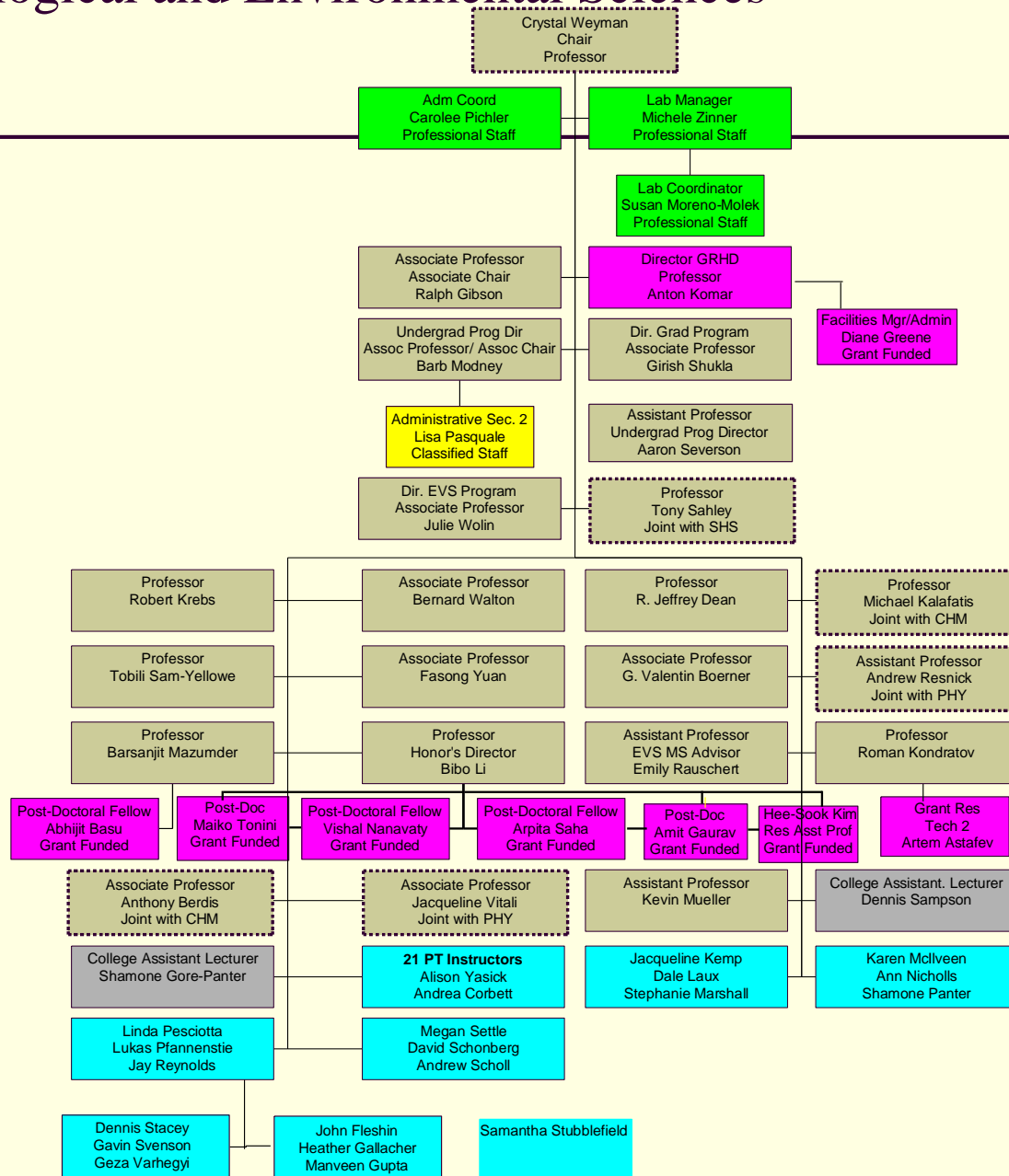
# College of Sciences and Health Professions

Dean's Office

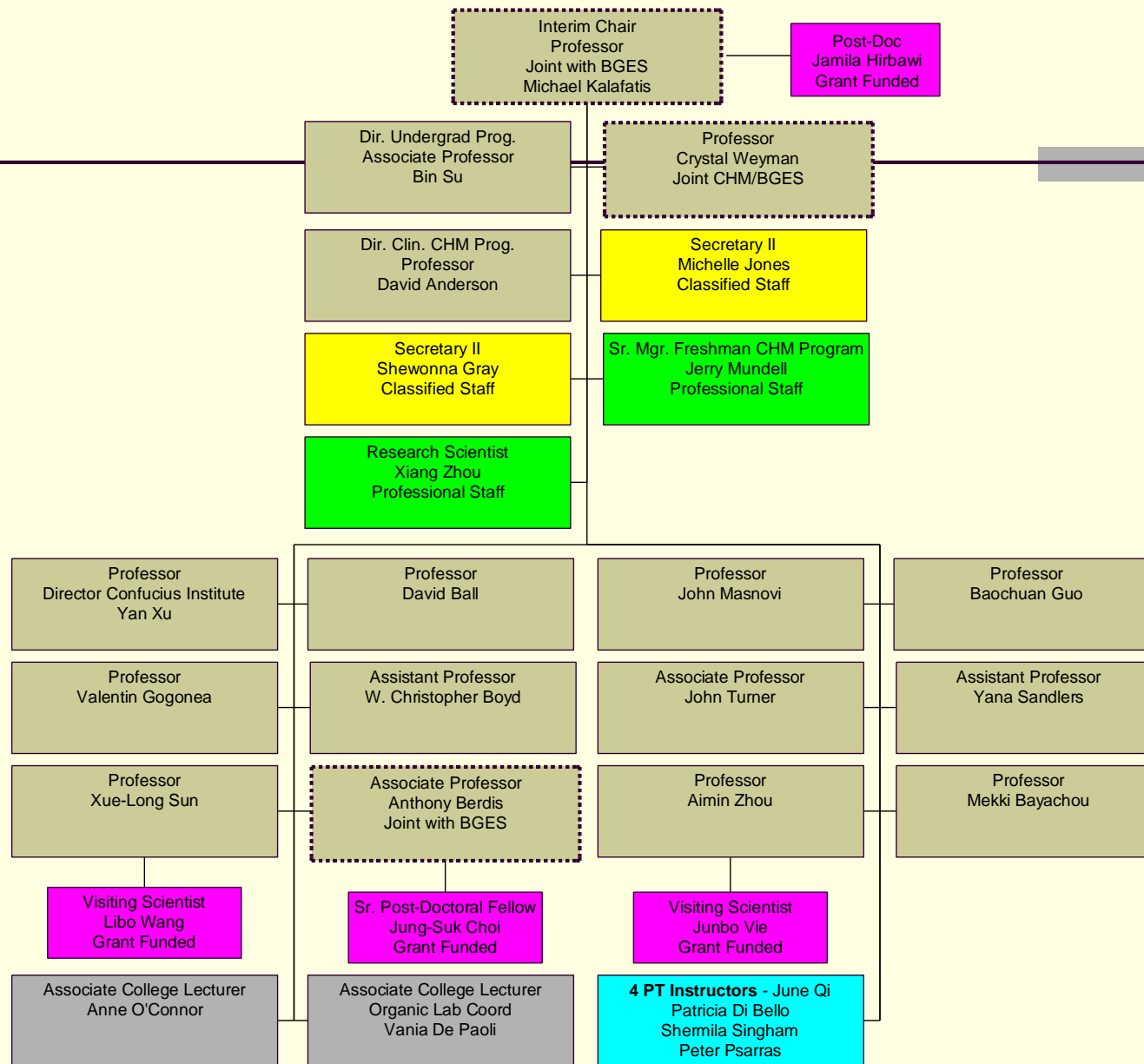
Page 2



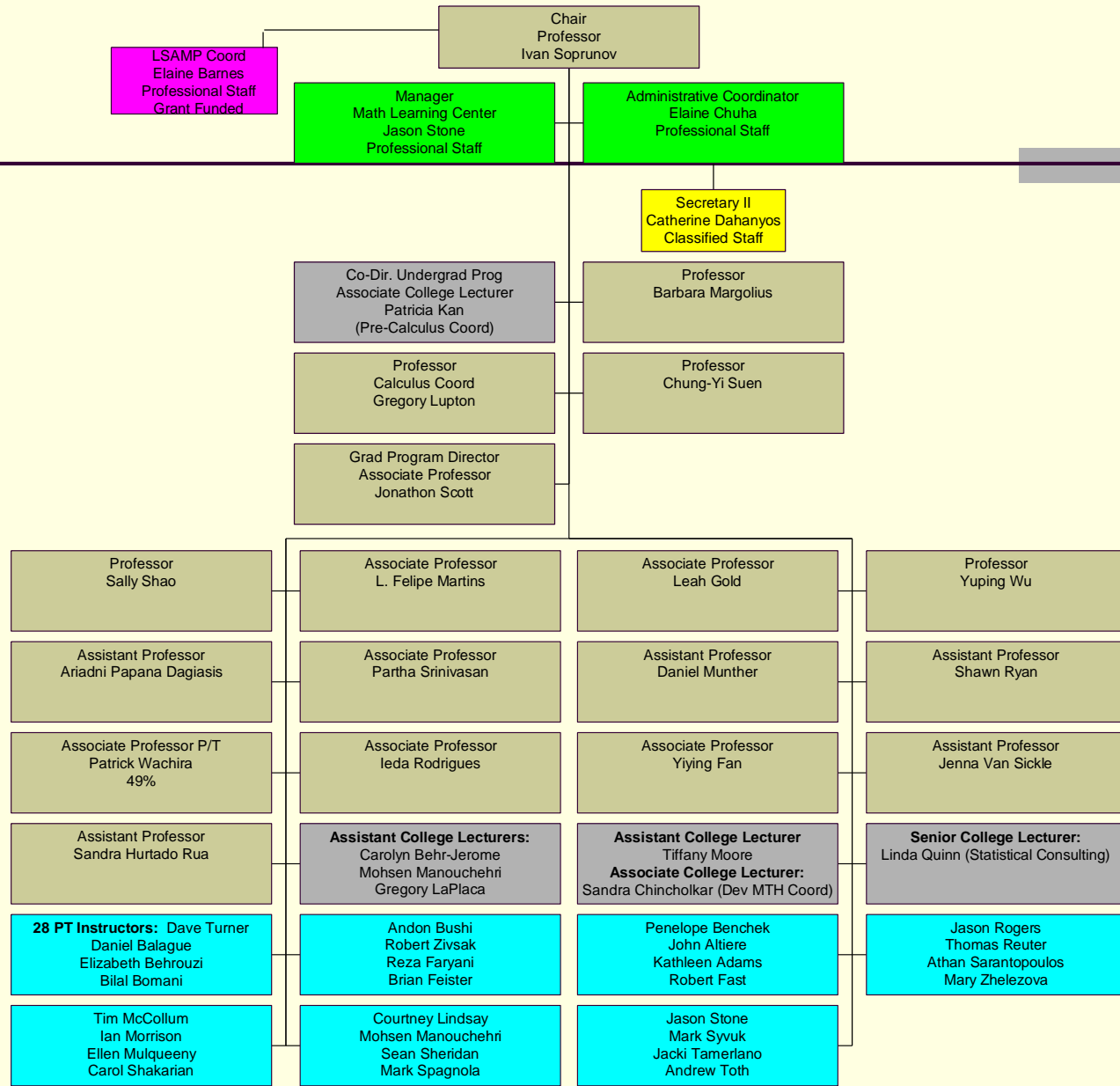
# Biological, Geological and Environmental Sciences



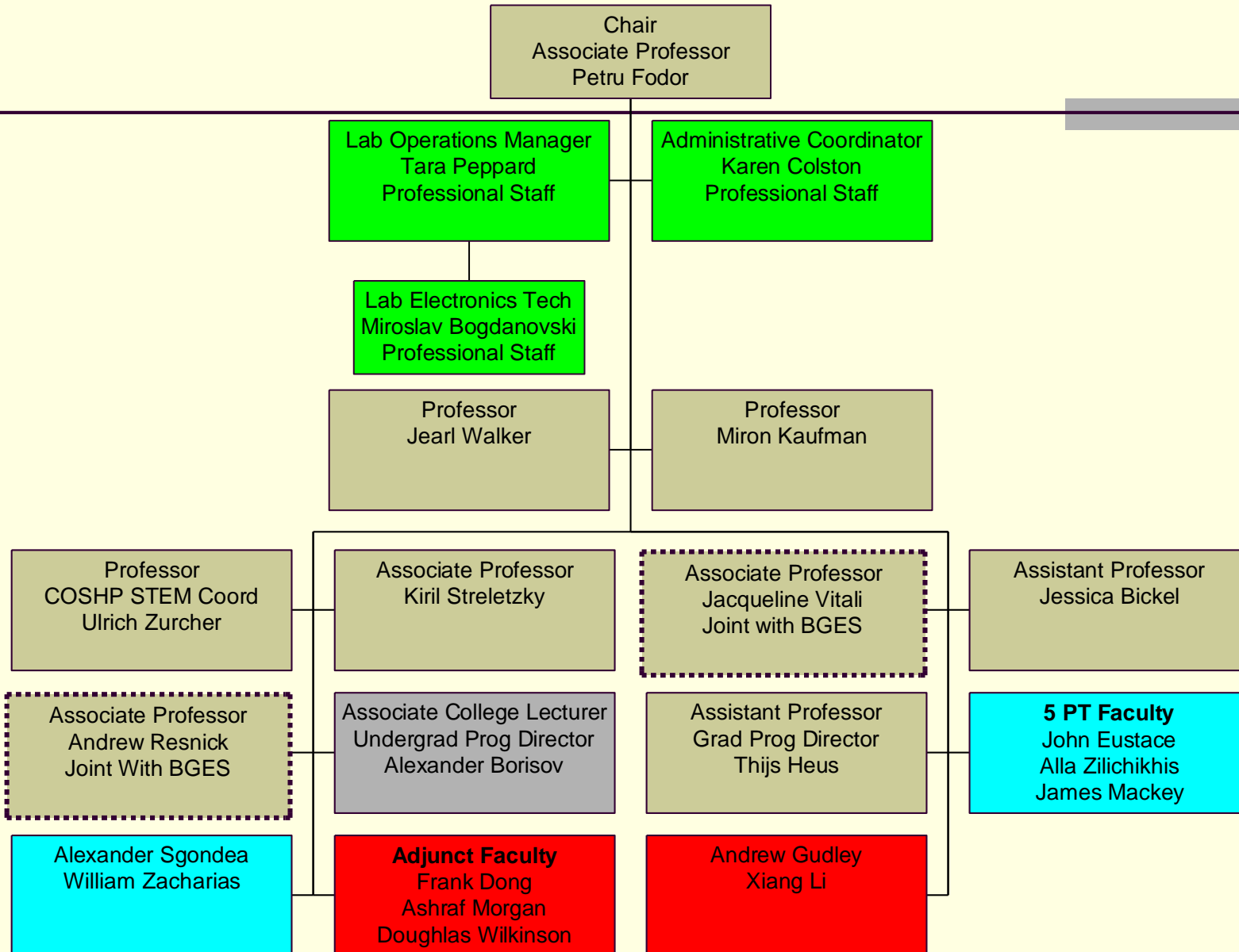
# Chemistry



# Mathematics

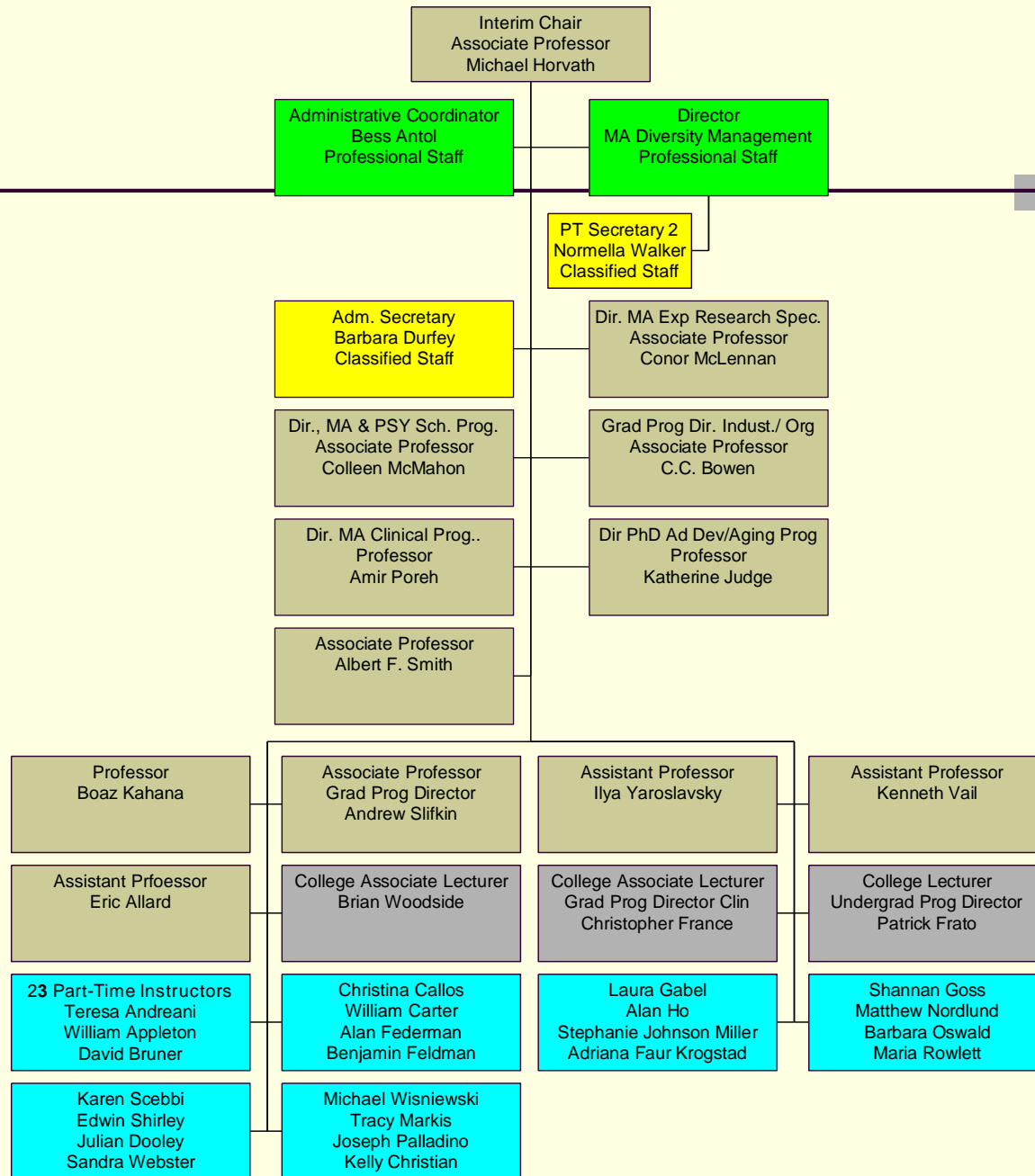


# Physics





# Psychology



**School of Health Sciences**  
College of Sciences and Health Professions  
Cleveland State University

**Director, School of Health Sciences, Beth Domholdt (Prof)**  
**Associate Director, TBD**

PT					OT				SPH					HS & PA					NEOMED		OTHER				
Director, DPT Program, Suzanne Giuffre (Assoc)					Director, MOT Program, Beth Ekelman (Prof)				Director, SPH Programs, Myrita Wilhite					Director, HS Programs, Jodi DeMarco (Assoc Lec) (including collaborative PA program with Cuyahoga Community College)					Edgar Jackson NEOMED-CSU Special Assistant to the President and Co-Director		Individuals Serving Multiple Programs or Outside of Program Structure				
Debbie Espy Faculty (Asst)	Jane Keehan Faculty (Clin Asst)	Mary Mili-donis Faculty (Assoc)	Ann Rein-thal Faculty (Assoc)	Maur-eeen Whit-ford Faculty (Assist)	Sue Bazyk Faculty (Prof)	Kelle DeBoth Faculty (Assist)	Karen Keptner Faculty (Assist)	Sue Wayne OT Field-work Coord	Doreen Binnie SPH Clinical Coord	Brig-et-te Culliver SPH Clinic Admin	Sue Neff SPH Clinical Coord	Carol Spears Faculty (Clin Assist)	Chad McCar-ney Faculty (Clin Asst)	Martha Burt HSC Admin Secretary	Andy Lam-ers Faculty (Assoc)	Todd Pesek Faculty (Assoc)	Anne Su Faculty (Assist)	Don Allens-worth-Davies Coord MPH Faculty (Assist)	Celeste Ribbins NEOMED -CSU Admin Coord	Ron-nette Johnson NEOMED -CSU Mgr Student Affairs	Tracy Arm-strong Contracts and Comp	Barb Legan-Turner Mgr COSHP Adv	Carrie Cuy PT & OT Sec'y	Brittany Wamp-ler Pre-Prof Coord	Tosha Studmi-re Coord Urb Hth Fellows
John Jezi-owski Faculty (Assoc)	Karen McIn-tyre Faculty (Clin Assoc) and DCE	Katie Pan-tano Faculty (Assoc)	Mada-lynn Wend-land Faculty (Clin Assist)	Part-Time Faculty	Robin Chilton Faculty (Clin Assoc)	TBD Faculty (Visiting )	Kristen Pataki Faculty (Clin Assist)	Part-time Faculty	Violet Cox Faculty (Assist Lec)	Terry Bau-man SPH Admin Asst	Monica Gordon Pershey Faculty (Assoc)	April Yorke Faculty (Assist)	Part-time Faculty	Mike Ham-monds Faculty (Assoc)	Sam Math-ew Faculty (Senior Lec)	Tony Sahley Faculty (Assoc)	Col-leen Walsh Faculty (Assist)	Part-time Faculty	Lena Grafton NEOMED -CSU Comm Engage Coord	Eliza-beth Okwudi NEOMED -CSU Advisor	Andrina Sabet GoBaby Go Project Mgr	Casey Maw-son Acad Adv	TBD PT & OT Admin Sec'y	Megan Carbone Pre-Prof Coord	

- This chart shows functional—not supervisory—relationships of the individuals within the School of Health Sciences (SHS)
- The SHS can be thought of as having four major functional groups: Physical Therapy (red), Occupational Therapy (orange), Speech and Hearing (green), and Health Sciences (various shades of blue). The Health Sciences grouping is complex, with related faculty and staff in public health and the NEOMED-CSU Partnership for Urban Health. Individuals in yellow serve multiple programs within the SHS or are outside the program structure.
- Graduate Degree Programs of the SHS: Doctor of Physical Therapy, Master of Occupational Therapy, Master of Arts in Speech-Language Pathology, Master of Science in Health Sciences, Master of Science in Health Sciences—PA track, Master of Public Health (Consortium of Eastern Ohio MPH Program)
- Undergraduate Degree Programs of the SHS: Bachelor of Science in Health Sciences (including pre-PT, pre-OT, pre-PA, general interest and NEOMED-CSU partnership tracks) and Bachelor of Arts in Speech and Hearing
- Certificate Programs of the SHS: Culture, Communication, and Health (UG and GR); Gerontological Studies (UG and GR); Occupational and Physical Therapy in the Schools (GR)

May 2017