

CSU SUMMER CONFERENCE RESERVATION FORM

Department of Residence Life

2450 Euclid Ave. Cleveland, OH 44115

216.687.5196

Fax: 216.687.5156

www.csuohio.edu/services/reslife

Group Name: _____

Contact Person: _____

(FIRST)

(MIDDLE)

(LAST)

Address: _____

(STREET)

(CITY)

(STATE)

(ZIP)

Work Phone: _____ Cell Phone: _____

E-mail Address: _____

Check in Date/Time: _____ Check out Date/Time: _____

Linen Service Required: None Standard (\$16/person) Executive (\$19/person)

Number of Linens required: _____

FENN TOWER ACCOMODATIONS

Please indicate the number of required beds for each accommodation.

See page 2 of this reservation form for accommodation diagrams.

_____ 1 bedroom, 1 bathroom (\$34/person/night)

(single occupancy) private bedroom, private bathroom

_____ 1 bedroom, 1 bathroom (\$18/person/night)

(double occupancy) Shared bedroom, shared bathroom

_____ 2 bedrooms, 2 bathrooms (\$39/person/night)

(double occupancy) private bedroom, private bathroom, shared living area and kitchenette

_____ 2 bedrooms, 2 bathrooms (\$21/person/night)

(quad occupancy) shared bedroom, shared bathroom, shared living area and kitchenette

Special Requests: _____



Cleveland State University is an Affirmative Action/Equal Opportunity Institution

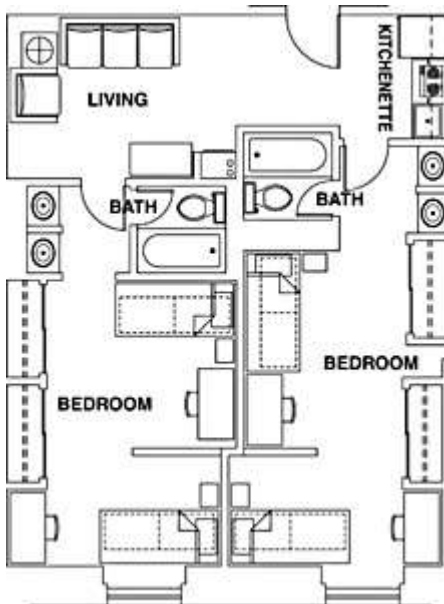
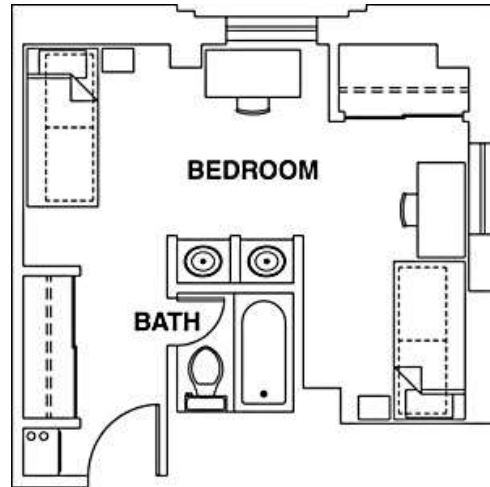
Professionally managed by



Fenn Tower Conference Rates and Floor Plans:

1 Bedroom/1 bathroom

Single	\$34 / person / night
Double	\$18 / person / night
Linens	Standard: \$16 / person Executive: \$19 / person



2 Bedrooms/2 bathrooms

Single	\$39 / person / night
Double	\$21 / person / night
Linens	Standard: \$16 / person Executive: \$19 / person

Amenities include:

- ✓ Air Conditioning
- ✓ 24 hour courtesy desk
- ✓ Wireless Internet Access
- ✓ Free Laundry
- ✓ Walking distance to restaurants
- ✓ After hours on-call staff
- ✓ Movie Theater
- ✓ Cooking Facilities
- ✓ Convenient check in/check out
- ✓ Game Room
- ✓ Walking distance to Downtown Cleveland
- ✓ Access to public transportation
- ✓ Meeting Rooms

ROOM ARRANGEMENTS:

OCCUPANCY: _____ [INSERT NAME OF GROUP] (herein after referred to as “Group”) is to provide Cleveland State University Department of Residence Life (“CSU”) with a room assignment roster. It will be the Group’s responsibility to assign rooms. Room types will be based on page 1 of the Conference Registration Form. CSU will provide Group with a list of rooms to be used for assignment.

LINENS: A linen pack includes 1 pillow, 1 blanket, sheets, pillowcase, 2 towels, and a washcloth. The standard linen service means that a linen pack is provided to the Group at check in. The executive linen service means that the beds are made prior to the Group’s arrival. Group should bring their own linens unless prior arrangements are made.

KEYS: Keys and conference guest cards will be issued to guests for their personal use and are not transferrable. Group participants should always lock the unit’s door for their personal safety and the safety of the Group participant’s personal property. Lost keys shall be reported immediately.

Groups will be charged \$75 labor and \$10 per key for each lost key and \$25 for each lost guest card. These charges are payable by the Group at the time the new key and/or guest card are issued. Keys and cards not turned in to CSU at the time of the Group’s check out will be considered lost, and the costs thereof added to the Group’s invoice.

PARKING: Parking is available to Groups. All parking accommodations will need to be made in advance with Cleveland State University’s Parking and Transportation Services Office by calling 216-687-2023 or by email at parking@csuohio.edu.

OTHER: Televisions, phones, and/or alarm clocks will not be provided in the rooms.

SUPERVISION: Group agrees to provide adequate and appropriate supervision of all Group participants associated with this program or conference during their stay at the property, including non-attended periods of operation to ensure compliance with the rules and regulations of CSU by all conference and camp participants.

Group agrees to comply with the following staff to participant ratio:

- One Group staff member for every five participants ages 4 and 5
- One Group staff member for every six participants ages 6 to 8
- One Group staff member for every eight participants ages 9 to 14
- One Group staff member for every 10 participants ages 15 to 17
- One Group staff member for participants ages 18 and over

Group will assign a staff member who is at least 21 years of age to be accessible to participants. The Group staff member must reside in a housing unit. Additional Authorized Adults should be assigned to ensure One-on-One Contact with minors does not occur and that appropriate levels of supervision are implemented.

RATES:

The charge for attendees is priced per bed per night. **Group will inform CSU at least 30 days prior to the check in date if the number of beds or linens from page 1 of the reservation form has changed. If the Group does not inform CSU within 30 days prior to the check in date, the Group will be contracted for the number of beds requested on page 1 of this reservation form, even if some beds are left vacant.**

CONTRACT:

A written contract will be provided to the Group at least 30 days prior to the check in date. The Group will execute and return the signed contract to CSU within seven (7) business days following its receipt of the same, along with one-half of the contracted amount by MONEY ORDER OR CHECK ONLY. All payments should be made payable to "Cleveland State University."

REFUNDS:

Unless otherwise stated in this Reservation Form or the contract form, and except for extreme emergencies, refunds for cancellations, late arrivals, and/or early departures will not be made.

FINAL PAYMENT:

The contracted amount must be paid in full prior to the Group receiving keys. All payments should be made payable to "Cleveland State University."

LATE PAYMENT:

Any overdue invoices will be assessed the maximum interest charge allowed by state law.

IMPOSSIBILITY OF PERFORMANCE:

This reservation form will terminate without liability to either party if substantial performance of either party's obligations is prevented by an enforceable cause reasonable beyond that of either party's control. Such causes include, but are not limited to, acts of God; regulations or orders of Governmental authorities, fire, flood, or explosion; war, disaster, strike, labor dispute, energy shortage, or in the event that the premises are sold in a bona fide sale.

Reservation is entered into this ____ day of _____, 20____, by and between Cleveland State University Department of Residence Life (Euclid Avenue Development Corporation), and _____.

The authorized representative of the Group, by signing this contract, agrees to all of the above provisions, terms and conditions, and has the legal power and authority to enter into this agreement.

GROUP REPRESENTATIVE:

DIRECTOR OF RESIDENCE LIFE:

Cleveland State University, Department of Residence Life, Euclid Avenue Development Corporation

Printed Name

By: _____
Megan Nicholson

Signature

Title: _____

Title

Date

Date