



© 2009 Herman Miller, Inc. 0A201

AERON CHAIR

DISTINCTIVE LOOK, UNSURPASSED ERGONOMIC SUPPORT

The Aeron chair's unique and often copied form reflects a revolutionary approach to comfort and ergonomics.

Designers Bill Stumpf and Don Chadwick replaced foam and fabric with Pellicle[®], a breathable, form-fitting material that allows for aeration and customized support. The innovative PostureFit[®] option provides adjustable sacral support to promote optimal posture for people of all sizes doing all kinds of activities, all day long.

With adaptable materials, the Aeron chair virtually becomes a part of the person who uses it. With translucent and reflective surfaces, it blends easily with the environment that surrounds it. And still it remains a design icon that looks and feels only like itself.



© 2009 Herman Miller, Inc. OAE200-2





Kinemat® Tilt



Pellicle® Fabric



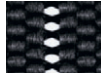
Posture Fit®

Materials

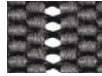
Aeron is unique. Its honest design and transparency make Aeron a comfortable addition to nearly any interior. The sophisticated selection of colors, finishes, and Pellicle® weave patterns in a choice of light-to-dark neutrals suits a variety of tastes and surroundings. Base and frame finish choices complement Pellicle colors.

Seat & Back

Pellicle Classic



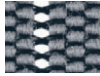
Carbon
3D01



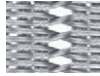
Lead
3D02



Nickel
3D03



Platinum
3D15



Zinc
3V01



Quartz
3V03

Pellicle Tuxedo



Grey Black
4M01



Blue Black
4M02

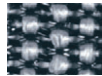


White Gold
4Q01

Pellicle Waves



Carbon
4E01



Platinum
4E03



Zinc
4F01



Quartz
4F03

Base & Frame

Finish



Graphite
G1



Graphite
G1



Polished Aluminum
CD



Graphite
G1



Titanium
XT



Smoke
S8

Arm pads

Finish



Black
BK



Smoke
S8

Leather



Wheat
2102



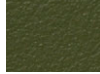
Honey
2103



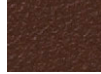
Copper
2104



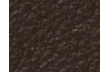
Canyon
2105



Olive
2106



Tobacco
2107



Mink
2108



Black
2109



Smoke
2110



Graphite
2111

Samples are representative of the material to be supplied and may not indicate an exact match; some variation may occur. Visit hermanmiller.com for the current list of textiles and finishes, detailed application information, material specifications, and information on ordering samples.

Design for the Environment:

- 94 percent recyclable and manufactured using 64 percent recycled content
- MBDC Cradle to CradleSM Silver certified
- GREENGUARD[®] certified
- level[™] 2 certified



Designers: Bill Stumpf and Don Chadwick

Warranty: 12-year, 3-shift



General Dimensions

work chair

side chair

work stool

A

A height: 41–45 in.

A height: 36.375 in.

A height: 52.25–57.25 in.

B width: 25.75–28.25 in.

B width: 24 in.

B width: 27 in.

C depth: 15.75–18.5 in.

C depth: 19.25 in.

C depth: 17 in.

AERON CHAIRS hermanmiller.com/aeron

- Distinctive looks, pioneering ergonomics.
- Breathable, form-fitting, Pellicle[®] suspension for unmatched thermal comfort.
- PostureFit[®] innovation provides superior back support, the only adjustable sacral support available.
- The only office chair most people can identify by name.

work stool



side chair

