



Using WPA Enterprise on Windows Vista to Access Cleveland State University's Wireless Network (WoWnet)



What is WPA (Wi-Fi Protected Access)?

WPA is a powerful, standards-based, interoperable security technology for Wi-Fi networks. It provides strong data protection by using encryption as well as strong access controls and user authentication. WPA can be enabled in two versions - WPA-Personal and WPA-Enterprise. WoWnet utilizes WPA Enterprise (aka 802.1X WPA). WPA-Enterprise verifies network users through a server. WPA utilizes 128-bit encryption keys and dynamic session keys to ensure your wireless network's privacy and enterprise security.

Prerequisites

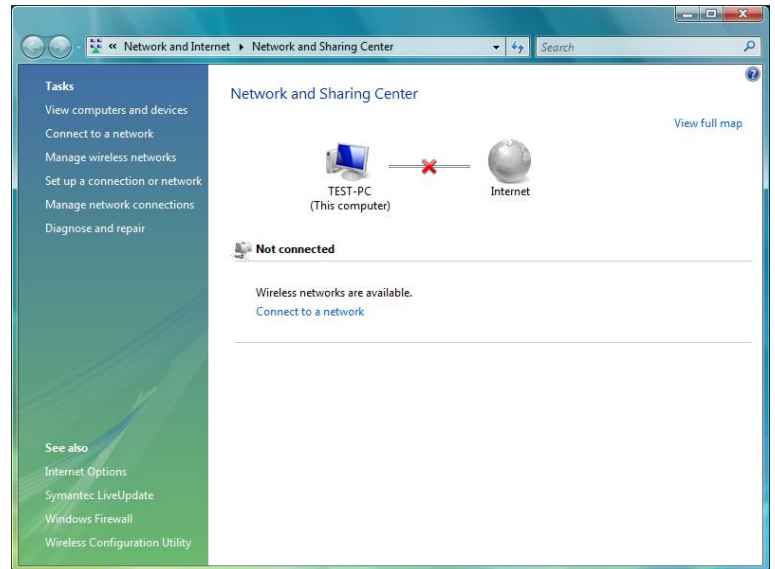
1. Windows Vista
2. A Wi-Fi certified Wireless network adapter capable of WPA Enterprise security and support for Windows XP Zero Configuration (WZC) feature.

Wi-Fi certification can be verified in the "PCs and Computing Devices - Adapter Cards" section at the Wi-Alliance's Certified Products website:

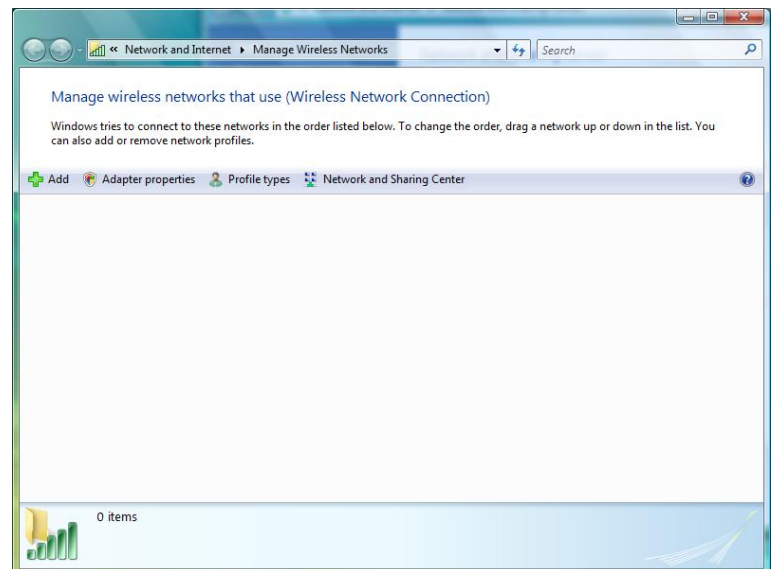
http://certifications.wi-fi.org/wbcs_certified_products.php?lang=en

Configuring Wireless Connection:

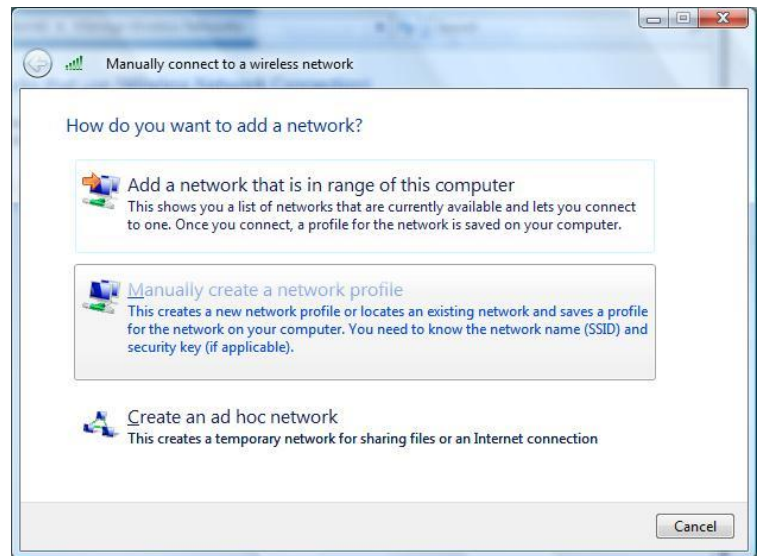
1. Be sure the wireless NIC is inserted and the most current drivers are installed on your computer
2. If a vendor-supplied utility was installed, configure it to allow Windows to manage the adapter.
3. Click on the **Windows Start Button**, then right-click on **Network** and choose **Properties**. Your screen will be similar to:
4. Click on **Manage wireless networks** located in the list of options to the left:



5. Click on the **Add** button



6. Choose “**Manually create a network profile**”

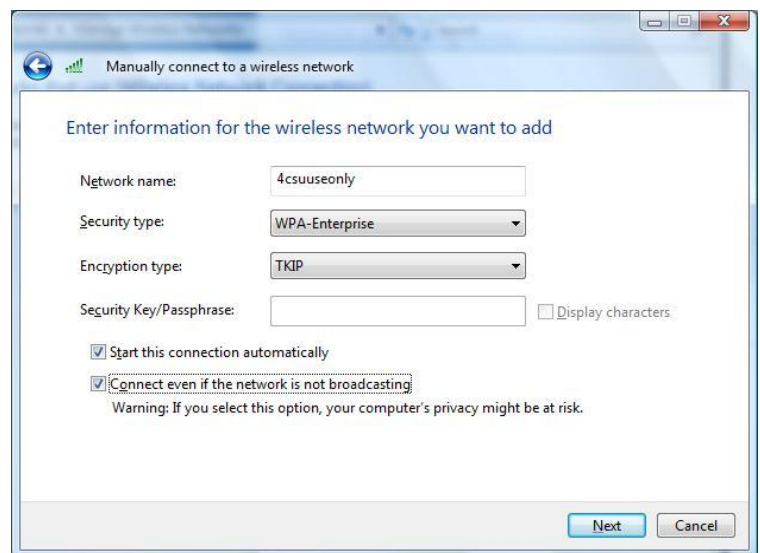


7. Enter **4csuuseonly** next to Network name.

8. Choose **WPA-Enterprise** for Security type.

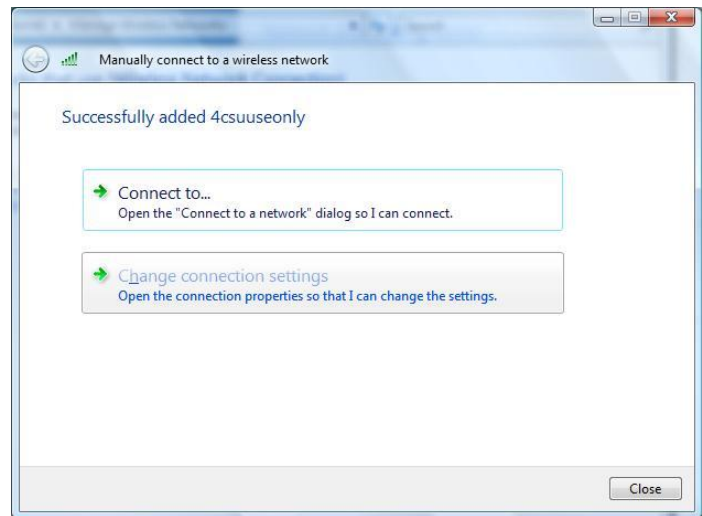
9. Encryption type should be set to **TKIP** with Security Key/Passphrase blank.

10. Be sure to **check the boxes** next to “Start this connection automatically” and “Connect even if the network is not broadcasting”



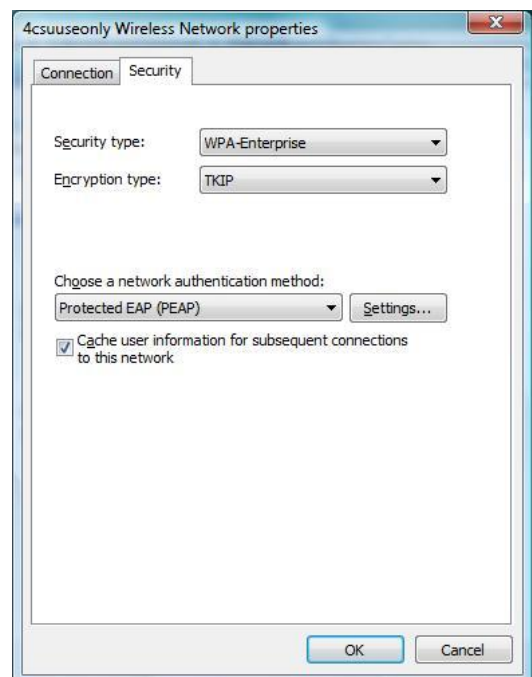
11. Click on **Next**.

12. Choose “Change connection settings”.



13. Click on the Security tab.

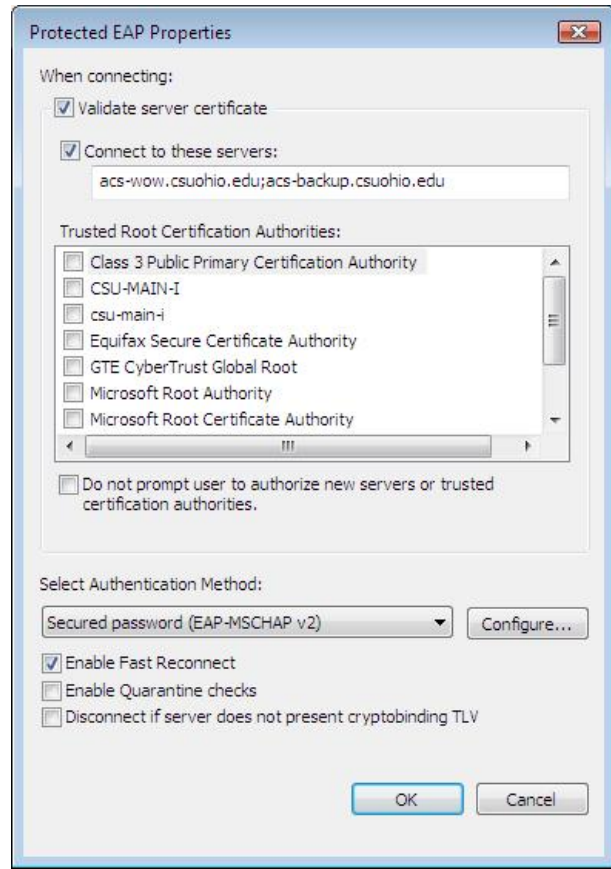
14. Click on Settings next to Protected EAP (PEAP).



15. Check the box **Connect to these servers.**
16. Enter the following exactly in the text box below the connect to these servers box:

acs-wow.csuohio.edu;acs-backup.csuohio.edu

17. Note there is no space between the ‘;’. Your window should look like this:

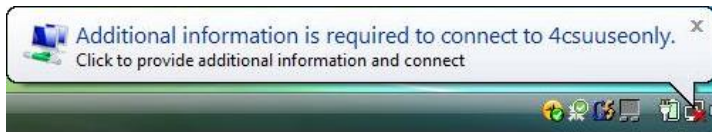


18. Click on **Configure** next to Secured password and uncheck the option to Automatically use my Windows logon name and password.
19. Click **OK** on the open dialog boxes to get back to the *Manually Connect to a Wireless Network* window.



20. Click **Close** to close the Manually connect to a wireless network window.

21. A balloon should appear in the bottom right corner of your screen, click on it. If it does not appear please restart your computer and it should appear.



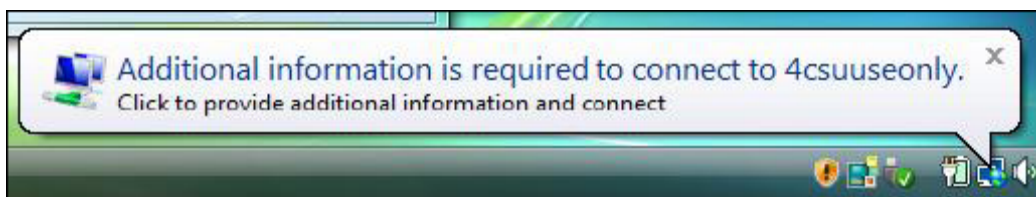
22. Enter the following information to authenticate yourself with the wireless network.

User name: **7 digit CSU ID**
Password: **Your CampusPass**
You may leave Login Domain blank.

23. Click **OK**.

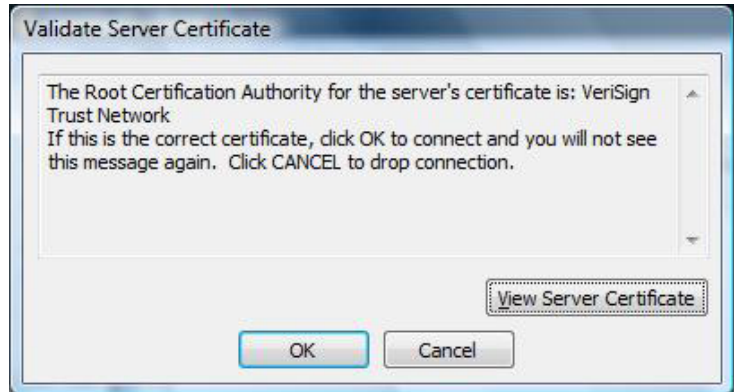


24. After clicking OK. Another balloon will appear. **Click** on it.



25. Click **OK** on the Validate Server Certificate window.

26. This is will take a moment to download and install the necessary VeriSign Trust Network certificate on your computer.



You should now be connected to WOWnet.

To test your connection open your web browser and go to <http://www.csuohio.edu>

If you experience any problems while attempting to connect, please contact the Cleveland State University PC Repair Shop at 216-802-3350.