

# WoWnet Setup For Mac OS X 10.5.x



## Requirements:

- Apple computer with built-in AirPort card capable of WPA-Enterprise encryption.
- Mac OS X 10.5 (Leopard)

## Configuring AirPort Connection:

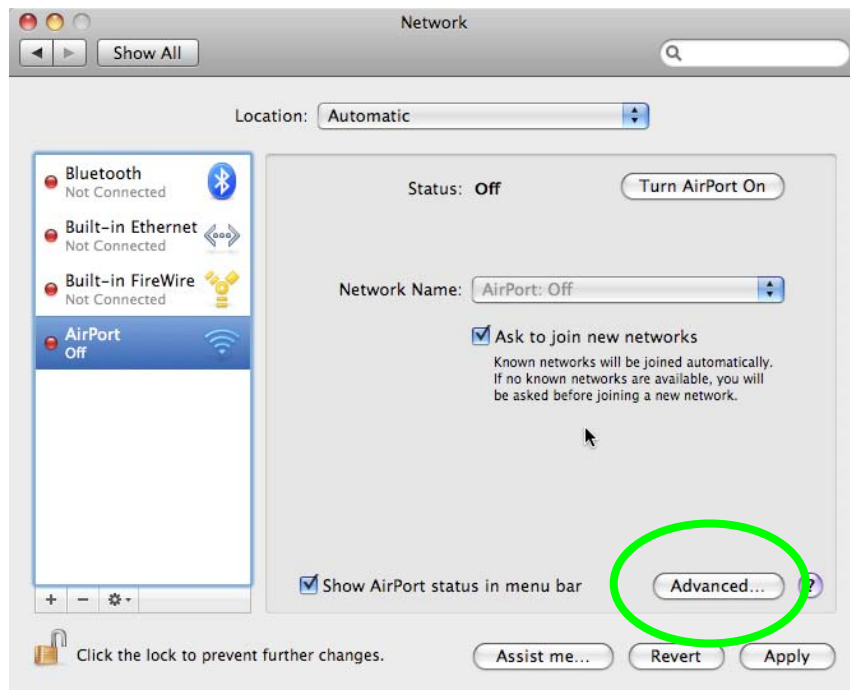
1. Open the System Preferences through the dock, or through the Apple in the upper left corner of the screen and select System Preferences from the menu.



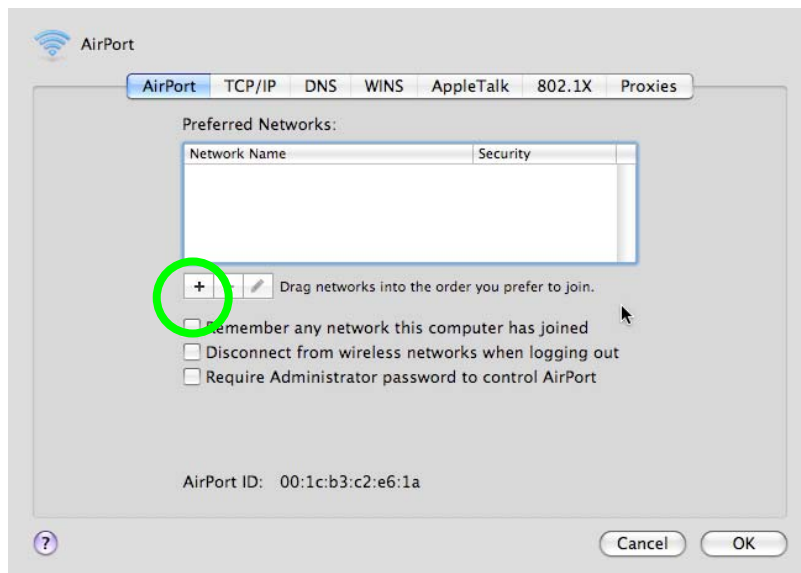
2. Click on Network icon in the System preferences pane.



3. Click on the button labeled Advanced.



4. Click on the + button under the Preferred Networks box.



5. Enter the following information in the corresponding fields. Network Name *4csuuseonly*, select WPA Enterprise for Security, User Name is your CSU ID number and Password should be your Campus Pass. Then click on the button labeled Add

**Enter the name of the network.**  
Enter the name of the network you want to add, and then enter the password if necessary. You can also click Show Networks to see a list of available networks.

Network Name: 4csuuseonly  
Security: WPA Enterprise  
User Name: 1234567  
Password: .....  
802.1X: Automatic  
 Remember this network

Show Networks Cancel Add

6. Click on the checkboxes labeled “Remember any network this computer has joined” and “Disconnect from wireless networks when logging out,” then click on the 802.1x tab.

AirPort

AirPort TCP/IP DNS WINS AppleTalk 802.1X Proxies

Preferred Networks:

Network Name	Security
4csuuseonly	WPA Enterprise

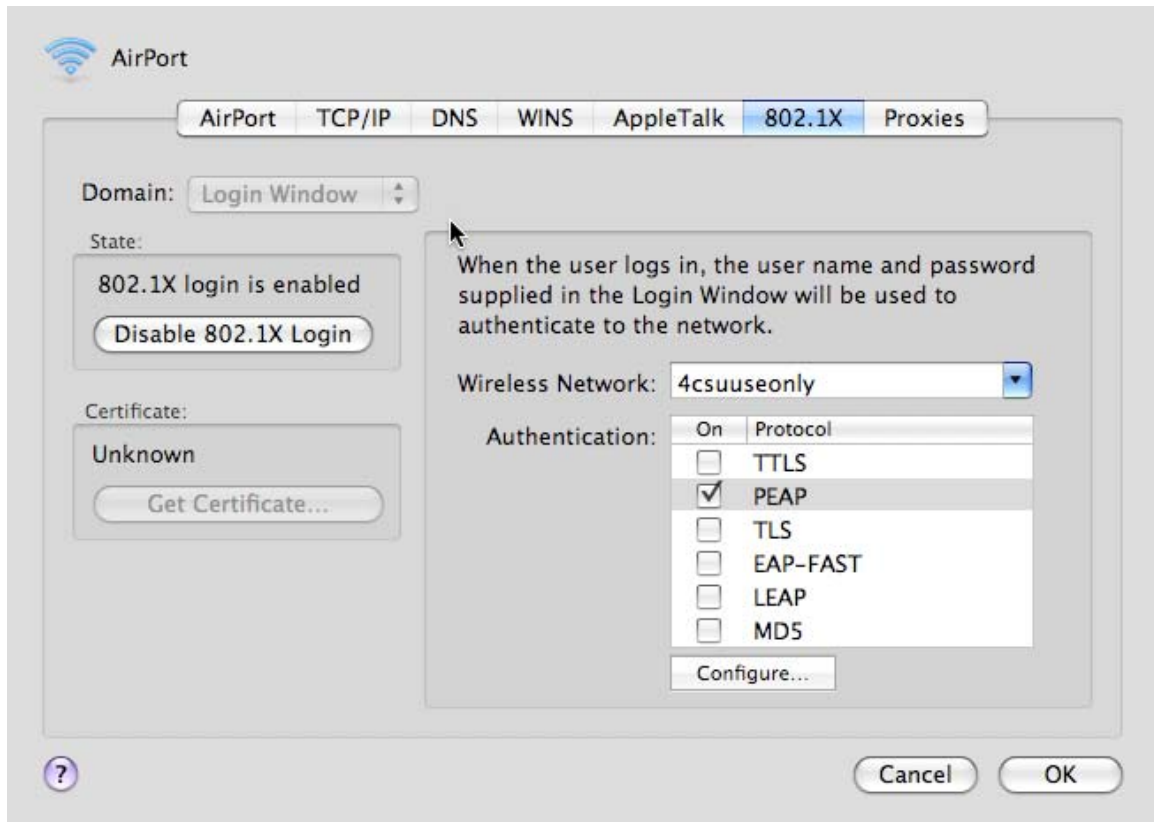
+ - Drag networks into the order you prefer to join.

Remember any network this computer has joined  
 Disconnect from wireless networks when logging out  
 Require Administrator password to control AirPort

AirPort ID: 00:1c:b3:c2:e6:1a

Cancel OK

7. Click on the button labeled Enable 802.1x Login. Then deselect all forms of authentication except PEAP. Your screen should look like the following after this step has been completed.



Depending upon your pre-existing configurations, you may see a screen asking you to verify a security certificate. If this appears click always trust.

If you have any questions call the PC Repair Shop at (216)-802-3350.