

# Cleveland State University



Information Services and Technology

## Network & Internet Installation & Information Guide Fall 2004 Edition



## Campus Ethernet

**For PCs using Windows 2000 & XP**

**Table of Contents**

Overview..... 2  
Requirements ..... 2  
Physically connect your computer to the CSU Network ..... 3  
Setup Network Connection..... 4  
Connecting ..... 6

### Overview

The following procedure is for people using a laptop computer on campus or those who have their own desktop computer and are using it on campus (Viking Hall residents, for example). This is a one-time set-up to enable you to access the CSUNET network and the Internet.

Access to the campus computer network is via DHCP only. This means each time you start your computer you will be automatically given an IP address that will get you on the network. Static IP addresses are not permitted on the network as a security measure.

Your Windows operating system should have everything you need to get connected.

### Requirements

You must be running a minimum of a Pentium class system with at least 64 MB RAM

- Windows 2000/XP
- Network Adapter (compatible with Windows 2000/XP)
- Patch cable (RJ45) otherwise know as 10BaseT (this will connect from the network adapter to the data jack on the wall).

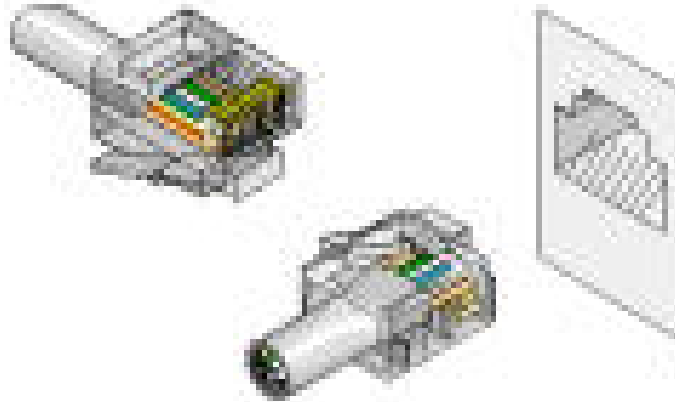
**NOTE:** The following procedure contains many screen graphics. Your screen may look different but will have similar options.

## Physically connect your computer to the CSU Network

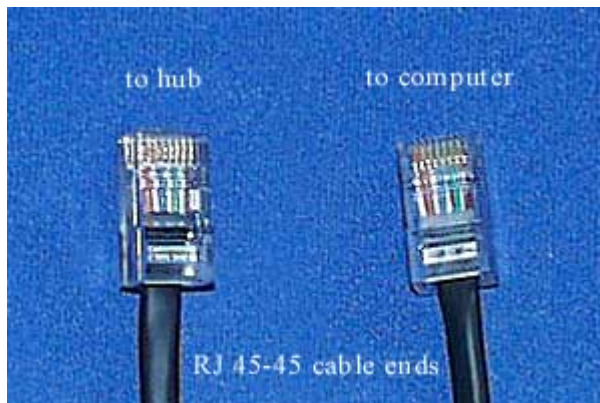
1. Obtain an RJ-45 Cable. These look similar to a phone cable, but are NOT the same. The RJ-45 cable has a larger plug:



2. Plug in your cable into the wall socket like in the diagram below. You will not be able to plug the cable in incorrectly.



3. Make sure the socket you are using is a network port. The way you would identify it is by reading the label on the port which should be in the format: XX-99-99-999X where 'X' would stand for a letter and '9' for a single digit number. The exact name specifies the location of the port.
4. Insert the other end of the cable into the appropriate port in your computer.



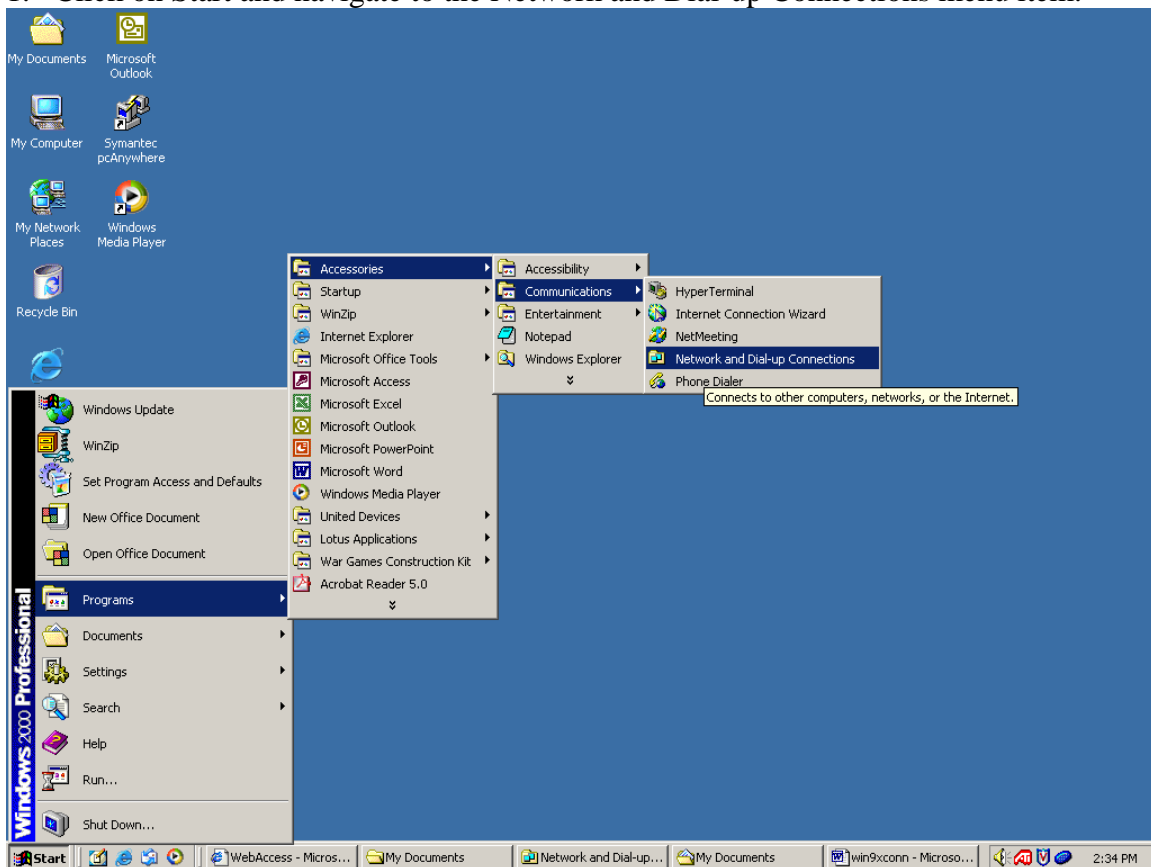
The network card slot is not the same size as the phone plug slot for a phone modem.

5. After the connection is made, reboot your computer so that the PC can retrieve its settings from our server.

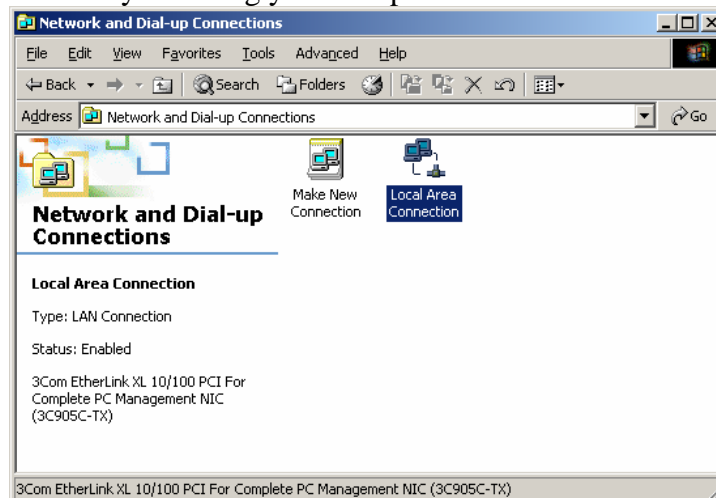
## Setup Network Connection

For Windows 2000/XP

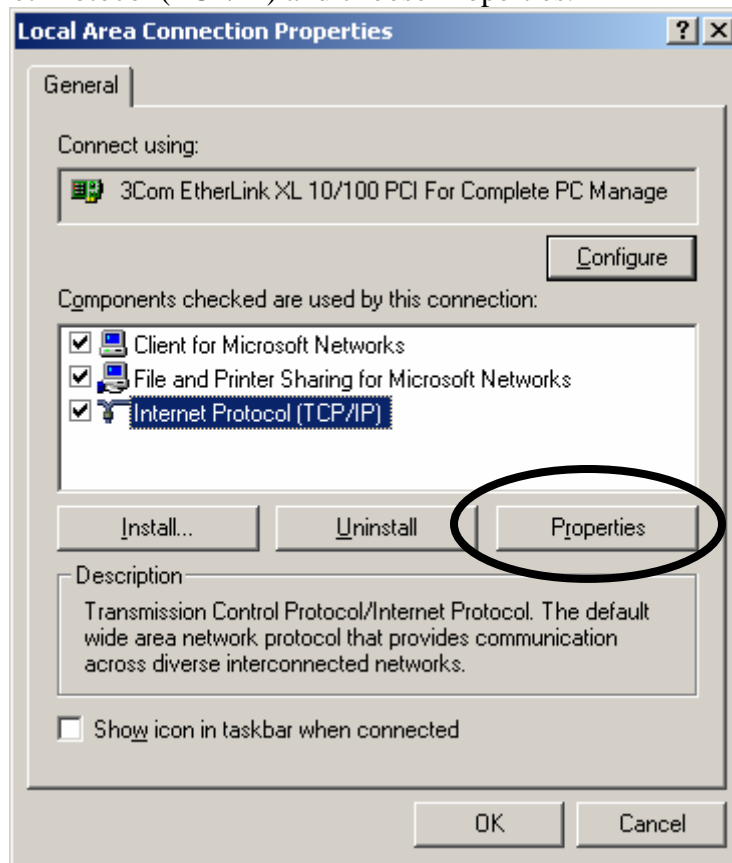
1. Click on Start and navigate to the Network and Dial-up Connections menu item.



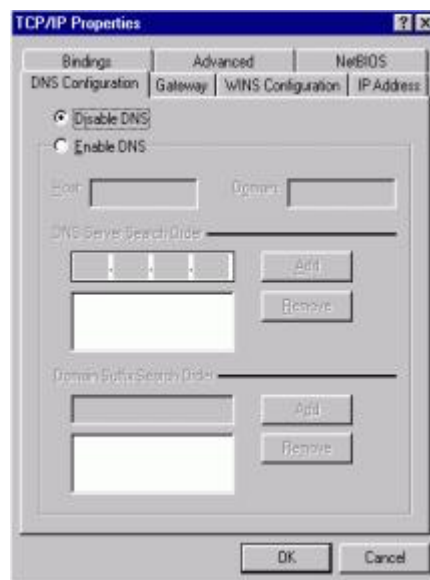
2. Right click on Local Area Connection and, in the pop-up options list, choose properties. If you do not have such an icon verify that you have a network card installed in your PC by checking your computer documentation.



3. Select Internet Protocol (TCP/IP) and choose Properties.



4. The DNS should be disabled. All DNS and other important setting will be obtained from the college server.



If you are unable to connect using the above instructions, please contact the Call Center at 687-5050.

## Connecting

Once you have set-up your network connection, when you restart your computer you should be prompted for your id and password. Your id is your CSU id number. Your password is your CampusPass.

If you do not know these, please contact the Call Center at 687-5050.

**User Name:** your CSU id number

**Password:** your CampusPass

**Domain:** CSUNET