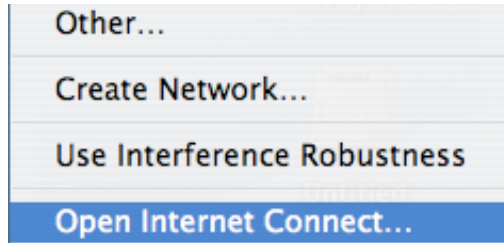
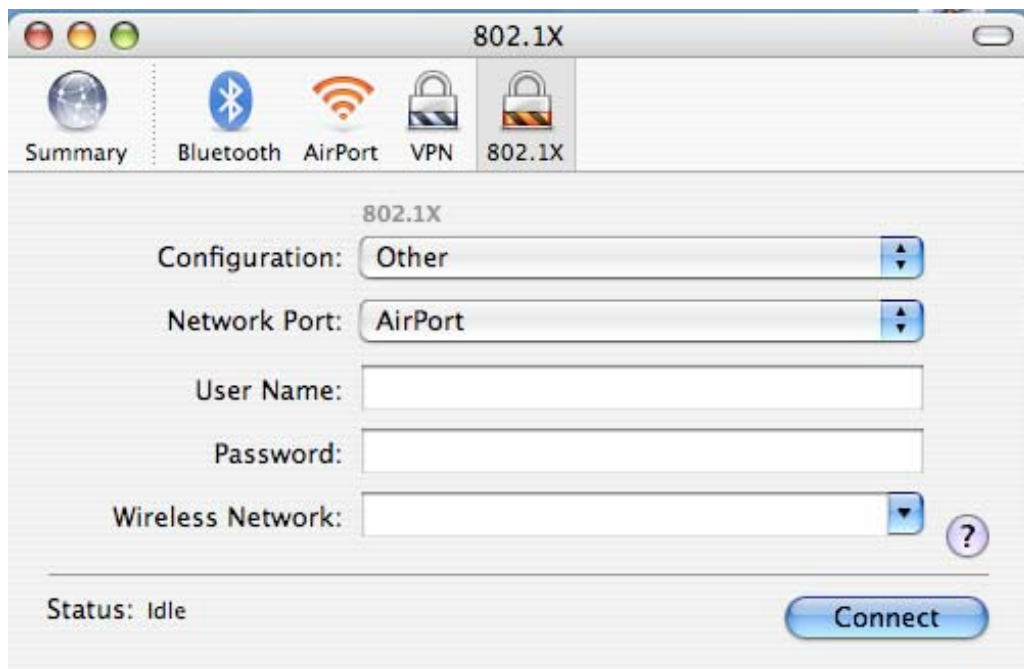
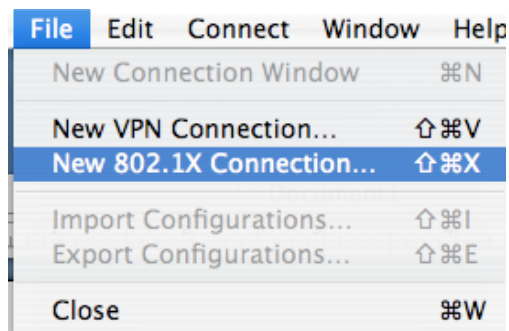


CSU WPA Wireless Setup for Mac OS X

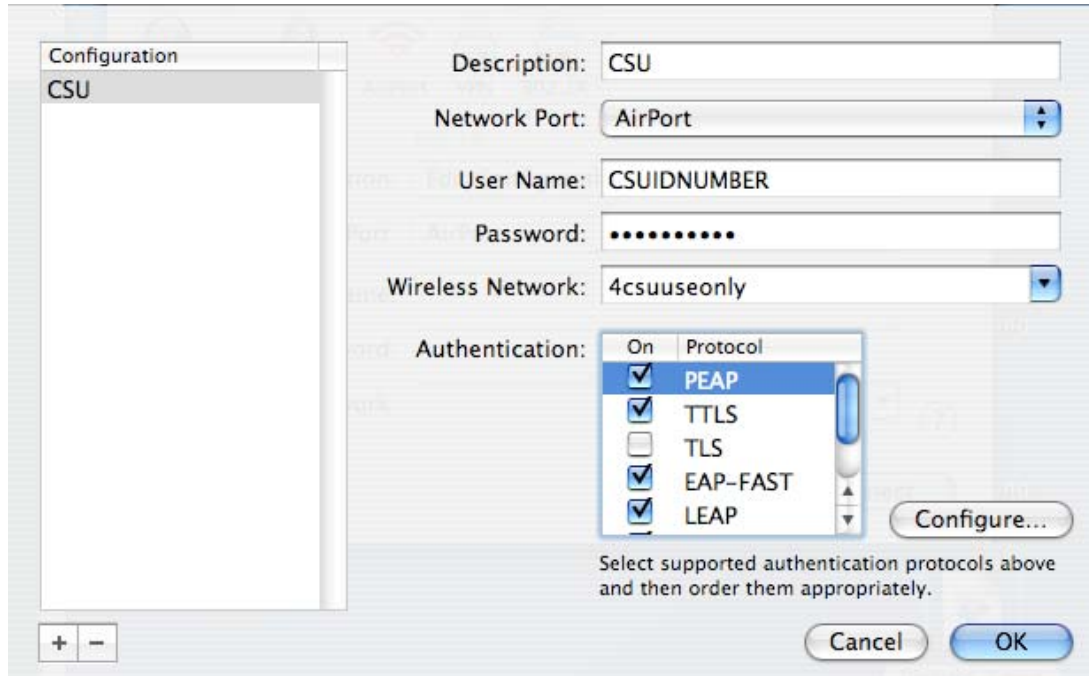
1. Click the Wireless radio icon in the top right hand corner of your screen and choose “Open Internet Connect” 



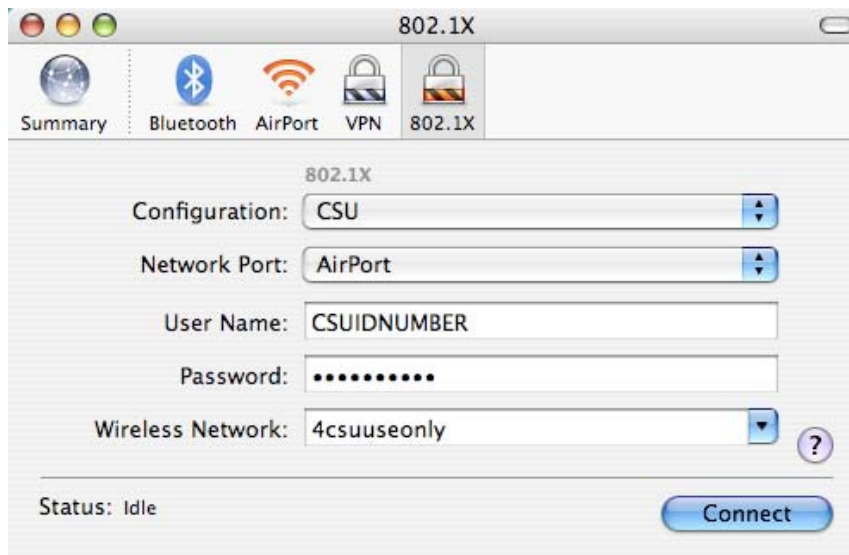
2. In the windows that opens, click the 802.1x icon, if you don't see it, click file, “New 802.1x Connection”.



3. Now click on the Configuration dropdown and choose “Edit Configurations” Fill the options out as shown below replacing the username with your CSU ID number and the password with your CampusPass Password. In the authentication list, drag PEAP to the top of the list and click **OK**.



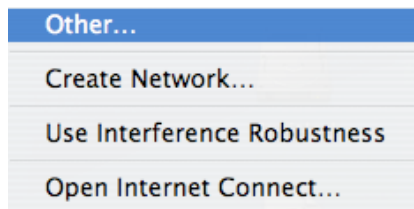
- 4.
5. You should see a screen similar to this. **DO NOT CLICK CONNECT**. Simply quit the Utility by going to File-quit or hold the Apple key on your keyboard and press the letter Q.



6. Click on the Airport Icon in the top right corner of your screen again



7. Choose “Other” in the list



8. Enter 4csuuseonly for the network name and choose WPA Enterprise in the Wireless Security dropdown.
9. Now click the 802.1x Configuration dropdown and choose CSU (the configuration we just created) if it's not there already and click **OK**.



10. It should connect to Cleveland State's wireless automatically. If you receive any warning messages, simply allow the changes and tell your Mac to always allow them if you have the option.