

Cleveland State



University

Information Services and Technology

Dial-up Instructions for MAC OS 10



Enclosed:

- Identify your CSU Internet account name & password
- Create a dial-up connection so you can use CSU as your free Internet Services Provider
- Using your dialup to access CSU Internet Service

Questions/Problems? Please call the Call Center at 687-5050

CSU Dialup Instructions for MAC OS X

Step 1: Identify your CSU Internet account name & password

IF YOU ARE UNABLE TO ACCESS THE INTERNET – call the Call Center at 687-5050 to create your Internet account.

Your CSU Internet Account name is created when you first register for classes and remains active until approximately 6 months after you are no longer registered for classes.

Your Internet set-up requires three pieces of information:

CSU Phone Number: (216) 258-0045

Internet Name: Your CSU ID number

Internet Password: Your VIKing PIN

If you do not know your VIKing PIN, please contact the Call Center at 687-5050.

Note: If you can call Cleveland 216 area code phone numbers free, this Internet connection will be of no cost to you. If you must pay for calls to the 216 area code, using this Internet connection will incur long-distance phone fees from your phone company. We do not currently provide phone numbers for other area codes. However, we do have reciprocity agreements with other universities in northern Ohio. Please contact the Call Center (687-5050) if you need more information on this.

CSU Dialup Instructions for MAC OS X

Step 2: Create the Dial-Up Set-Up

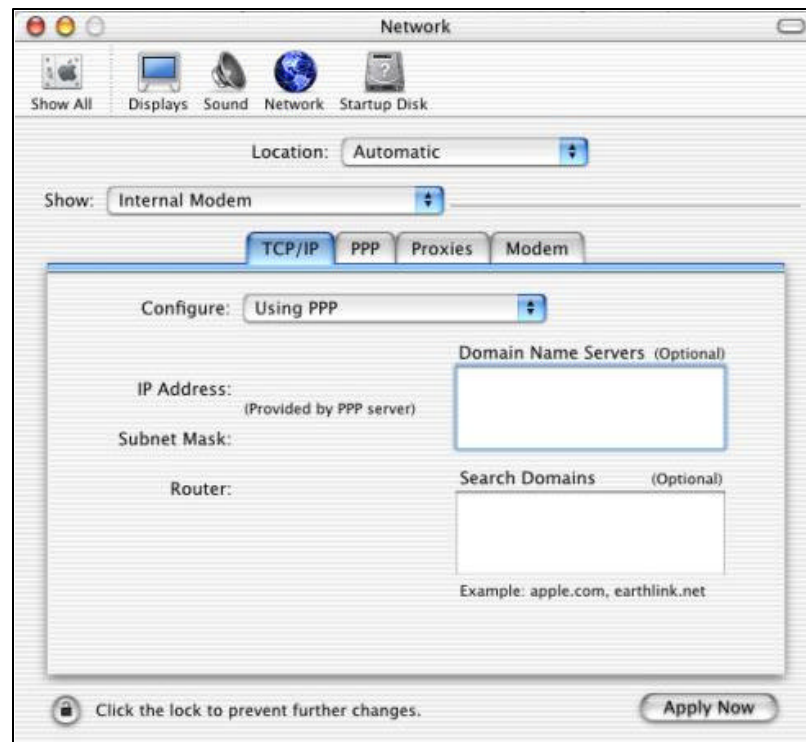
This document will create a dial-up set-up.

If you already have a dial-up connection to CSU, either delete it or name the new connection CSU2.

1. Click on the Apple Menu and click on System Preferences.

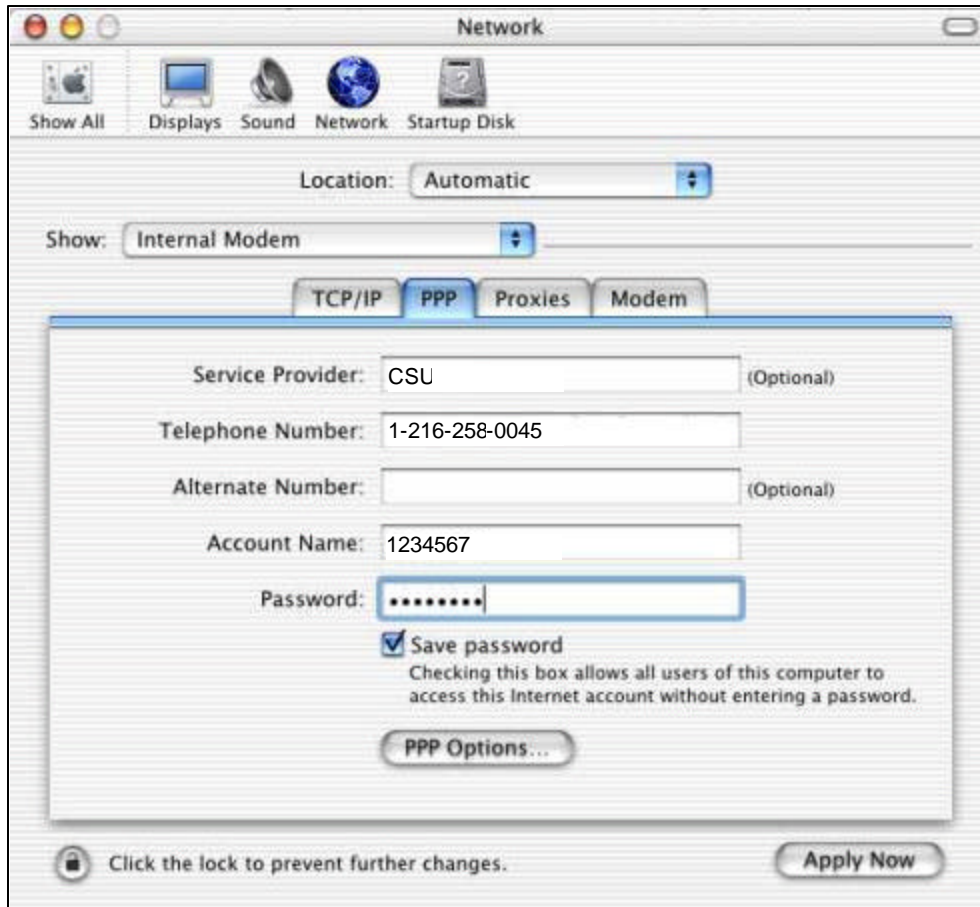


2. In the System Preferences window, click on "Network". In the Network window, set the Location to "Automatic." Make sure that next to "Show" it says "Internal Modem." If it does not, select it from the pull-down menu. In the TCP/IP tab, set Configure to "Using PPP". Leave the Domain Name Servers and Search Domain fields empty.



CSU Dialup Instructions for MAC OS X

3. Click on the PPP tab and enter a **Service Provider** name (we recommend “CSU”) to label your connection to us. Enter the CSU Dial-Up **number** 1 216 258 0045, your **account name** (CSU ID number) and **password** (VIKING PIN).



If you do not know your password, please contact the Call Center at 1 216 687 5050.)

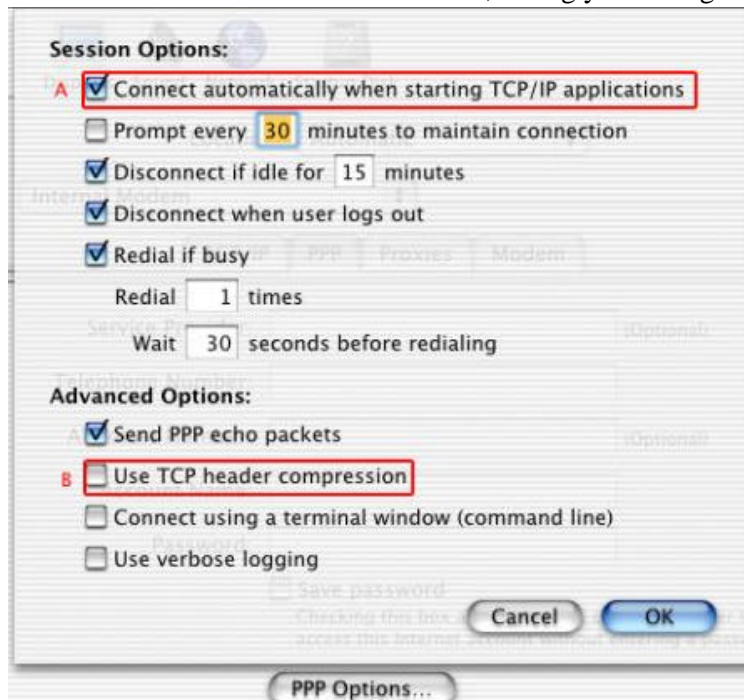
Continued...

CSU Dialup Instructions for MAC OS X

4. For advanced options click on "PPP Options..." at the bottom of the menu. These options are used if you would like to set the system to make a dial up connection automatically or use Classic applications while using OS X.

PPP Options...

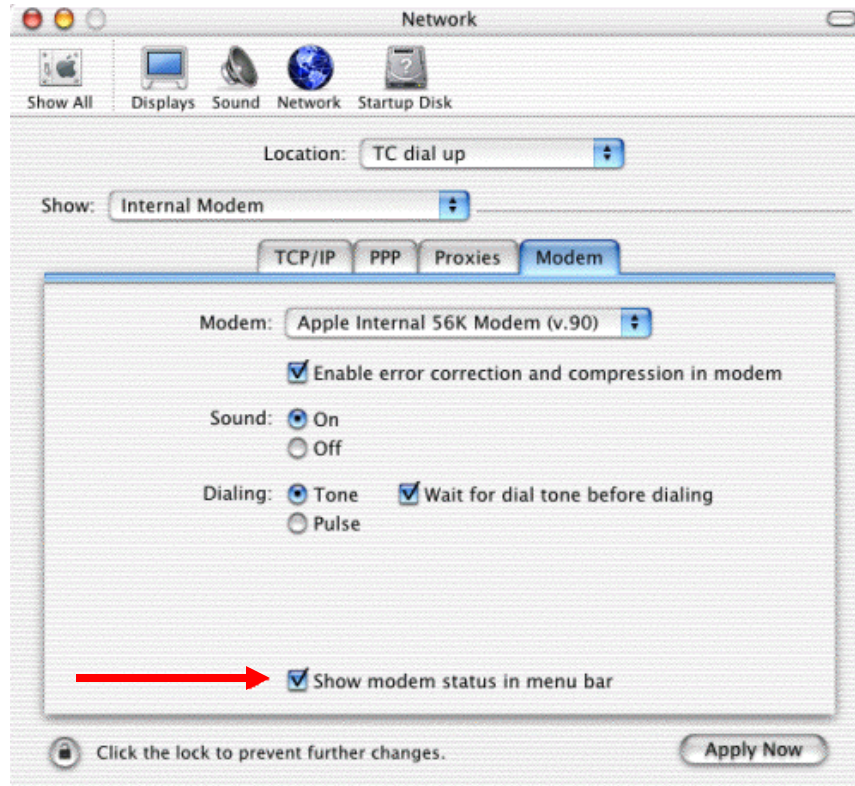
- A. If you would like the computer to connect automatically put a checkmark next to "Connect automatically when starting TCP/IP applications." (If enabled, you can connect to the Internet by double-clicking on IE, Netscape, or other Internet programs.)
- B. For increased stability when using Classic applications with a PPP connection remove the checkmark next to "Use TCP header compression".
- C. When done click on "Ok" button to close the window, saving your changes.



Continued...

CSU Dialup Instructions for MAC OS X

- Next, click on the "Modem" tab.
- Place a checkmark next to "Show modem status in menu bar" option near the bottom of this menu (see the red arrow below). This will place a telephone icon on the right hand side of the menu bar (*the menu bar is the stripe that runs across the top of your screen and holds your menus, clock, etc.*).

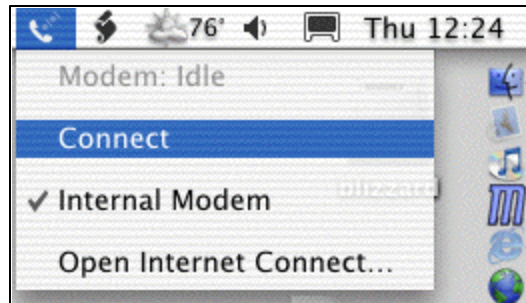


This telephone (or modem status) icon allows you to quickly and easily make a dial up connection.

Connecting Using the Shortcut

Step 3: Connect to the Internet Using Your CSU Shortcut Icon

Click on the telephone icon on the right hand side of the menu bar and then click on "Connect".



To disconnect, click on this same icon and "Disconnect"

Automatic Connections:

If you enabled automatic connections for TCP/IP applications in step 4A above, connect by double-clicking on the icons for your internet programs -- Internet Explorer, Netscape, Apple Mail, Outlook Express, etc.