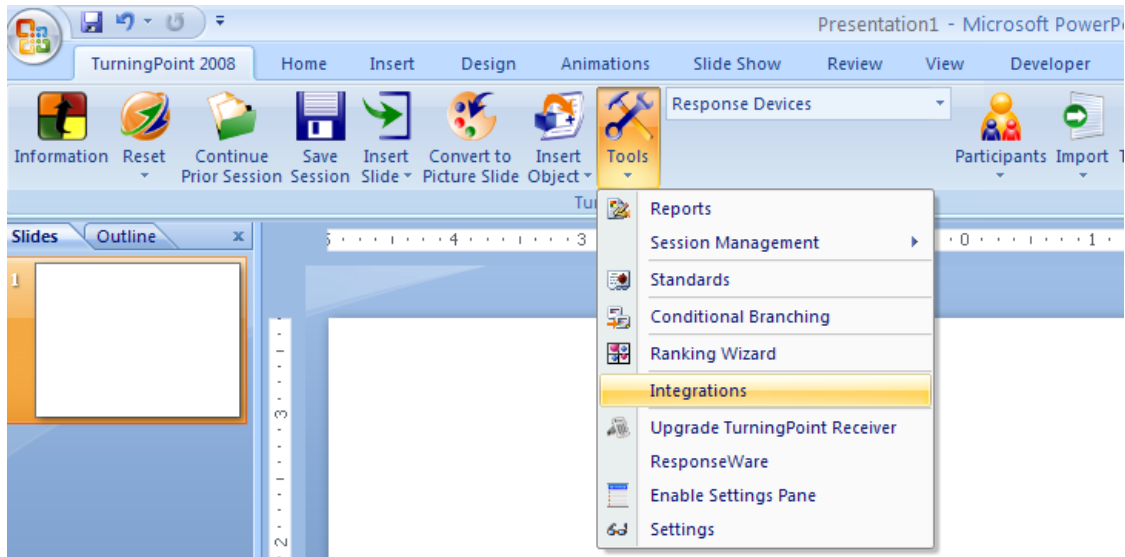
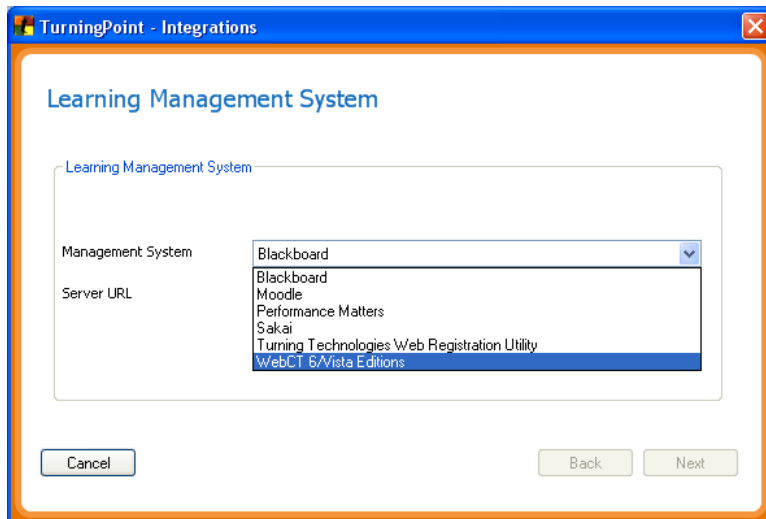


Importing Participant List from Blackboard

1. Open **TurningPoint 2008** using icon on desktop
2. From the **TurningPoint** tab, click on **Tools, Integrations**.



3. Select 'WebCT 6/Vista Editions' from the **Management System** dropdown list.



4. Enter 'https://elearning.csuohio.edu' in the **Server URL** field, then click **Next**

The screenshot shows a window titled "TurningPoint - Integrations" with a sub-header "Learning Management System". Inside the window, there is a form with the following fields:

- A text field labeled "Learning Management System" which is currently empty.
- A dropdown menu labeled "Management System" with "WebCT 6/Vista Editions" selected.
- A text field labeled "Server URL" containing the text "https://elearning.csuohio.edu".

At the bottom of the window, there are three buttons: "Cancel", "Back", and "Next".

5. Enter your Blackboard **Username** and **Password**, then click **Next**

The screenshot shows a window titled "TurningPoint - Integrations" with a sub-header "WebCT Login". Inside the window, there is a form with the following fields:

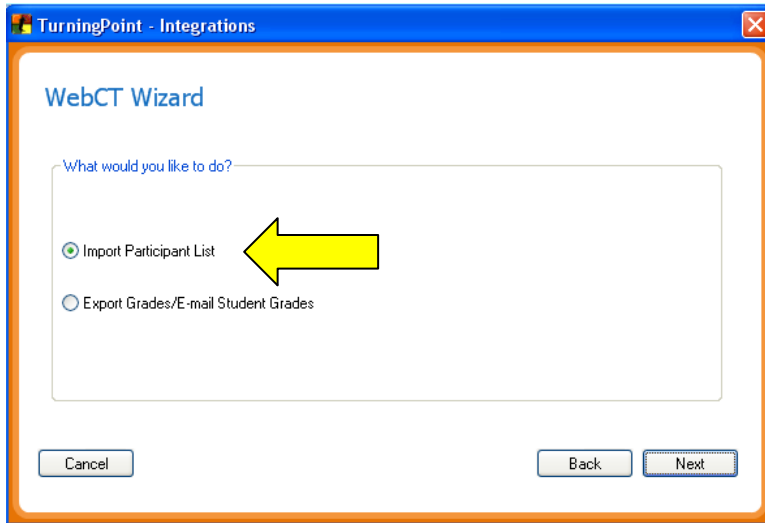
- A text field labeled "Username" containing the text "1234567".
- A text field labeled "Password" containing a series of asterisks "*****".
- A dropdown menu labeled "Institution" which is currently empty.

Below the form, there is a checkbox labeled "Save this information for future use" which is unchecked.

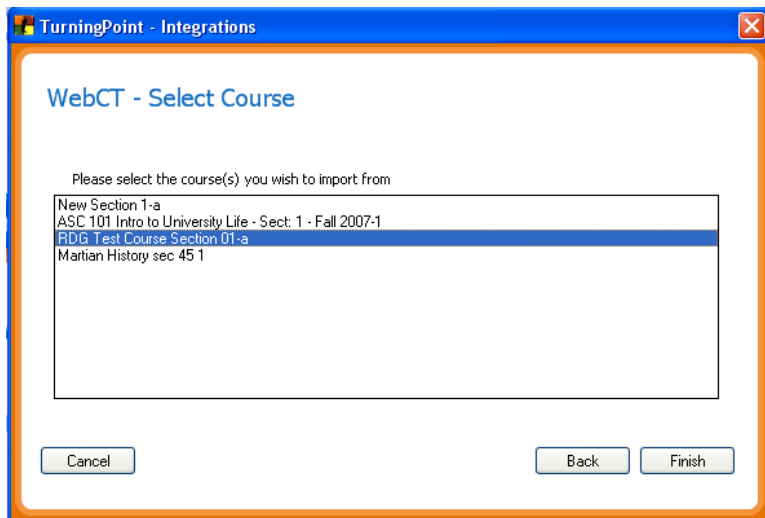
At the bottom of the window, there are three buttons: "Cancel", "Back", and "Next".

The Institution field will be automatically populated with 'Cleveland State University'.

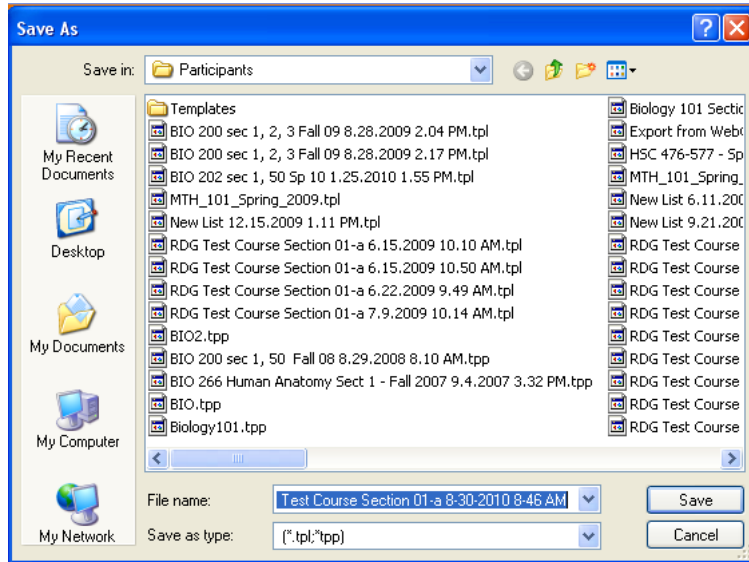
6. Select 'Import Participant List', then click **Next**



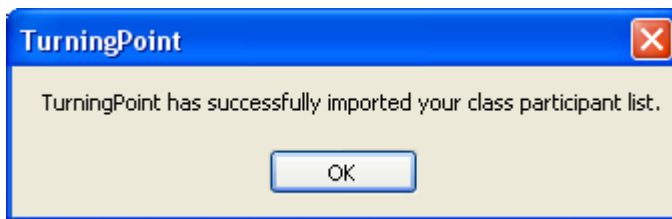
7. Select the class(es) you want to import, then click **Finish**.



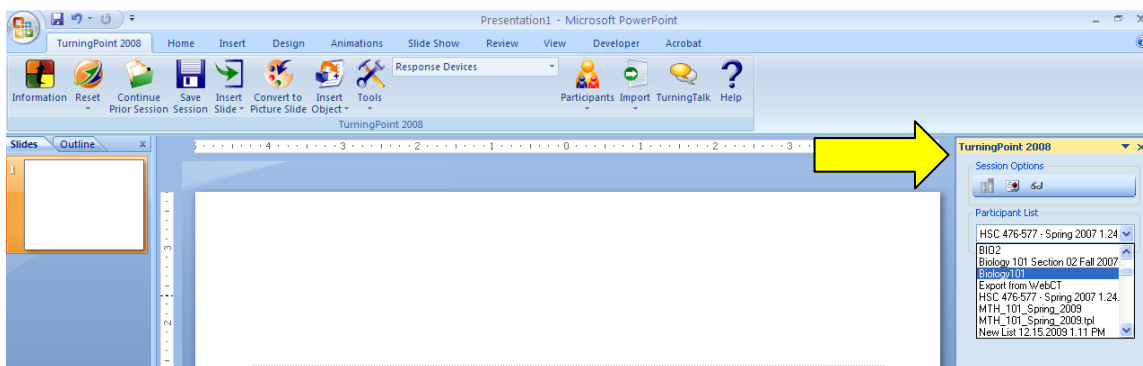
8. You will be prompted to name and save the Participant file



9. The following message will be displayed.



10. To use a participant list for polling, click on the dropdown list to the right under the **TurningPoint 2008** pane and select the participant file you just created.



11. You are now ready to run your TurningPoint PowerPoint presentation and start polling.