

# ADAPTIVE TECHNOLOGY LAB EQUIPMENT AND SOFTWARE

Serving Cleveland State University  
Students and Faculty with disabilities



Updated July 2009

Prepared by Masters of Occupational Therapy Students:

Zavinta Maleckaite, Lisa Robbins, Divya Sandhu, Diana Starcic

For

Dr. Glenn Goodman  
HSC 569  
July, 2009

## **Table of Contents**

AlphaSmart Dana Wireless Classroom Notetaker .....	1
Alva BC 640-Braille Display.....	1
Andrea Microphone Headset.....	2
Audio Graphing Calculator.....	2
Bat Keyboards.....	3
Big Keys Keyboard.....	3
Braille Keyboards (80 and 40 character displays).....	4
CanonScan LiDE.....	4
Click-n-Type.....	5
Co:Writer and Word Prediction Software.....	5
Cross Scanner: Mouse Simulation Program.....	6
Darci Too Switch Interface Box – Morse Code Input.....	6
DocuPen Handheld Scanner.....	7
Dragon Naturally Speaking.....	7
Duxbury Braille Translator.....	8
Earobics Software.....	8
Ergonomic Keyboards.....	9
Inspiration .....	9
IntelliKeys Adaptive Keyboard .....	11
IntelliTools Classroom Suite .....	11
Jaws Screenreader.....	12
Jouse 2.....	13
Joystick-to-Mouse .....	13
Juliet ProBraille.....	14

Kurzweil 1000.....	14
Kurzweil 3000.....	15
Mandec Tracker and Screen Doors .....	16
MathType .....	17
MLS Student Addition Classroom Camera.....	18
Mouse Mover Interface Box .....	18
Orion TI-36 Talking Scientific Calculator .....	19
Pictures in a Flash .....	19
Pulse Pen .....	20
QuickTac .....	20
Read and Write Gold .....	21
SoothSayer Scan Plus with Reach Virtual Keyboard .....	21
Switches and Switch Mounting Devices .....	23
Switch Adapted Mouse .....	23
Talking Typing Teacher .....	24
TASH USB Mini Keyboard .....	24
Victor Reader Stream .....	25
Victor Reader Vibe and Wave .....	25
Wafer Switch .....	26
WIVIK On-Screen Keyboard and Scanning System .....	26
Word Q Writing Software .....	27
Word Talk .....	27
Write: OutLoud .....	27
ZoomText .....	28

## ALPHASMART DANA WIRELESS CLASSROOM NOTE TAKER

- Palm Powered laptop alternative that combines the convenience and affordability of a handheld with functionality comparable to a notebook computer
- Each ultra-lightweight Dana features an integrated full-size keyboard with touch screen display that is 3.5 times wider than a typical handheld and can deliver more than 25 hours of battery life between charges



- The wireless model, Dana Wireless, enables Wi-Fi (802.11b) connectivity in the classroom, on campus, at the office or at thousands of public HotSpots, enabling email, Web browsing and instant messaging.

<http://www.spectronicsinoz.com/article/alphasmart-neos-and-danas-from-spectronics-best-value-in-australia-and-new-zealand>

## ALVA BC 640- BRAILLE DISPLAY



- Merges classic Braille display access with modern note-taking functionality
- High quality Braille cells and easy-to-operate keys allow for effortless reading and smart navigation
- Strategically positioned eTouch buttons at either end of the Braille display allow for quick and efficient access to countless applications to one's cellular phone, PDA and Windows-based PC
- Combines powerful features with a compact and lightweight design

<http://www.optelec.com/en/product/blindness/alva-bc640>

## ANDREA MICROPHONE HEADSET



- Works with Dragon to provide more accurate, reliable, and consistent speech recognition
- The USB microphone creates an external sound card for the PC you are operating on; this improves Dragon's ability to "hear" your voice
- Dragon is able to amplify your voice and cancel other background noises

[http://www.voicerecognition.com.au/nc181vm\\_usb\\_microphone.htm](http://www.voicerecognition.com.au/nc181vm_usb_microphone.htm)

## AUDIO GRAPHING CALCULATOR

- Designed for students with vision, learning or motor disabilities
- Provides an alternative to the handheld scientific calculators commonly used in the classroom
- Operates on a flexible Windows platform
- Augmented with audio and tactile feedback
- Provides an alternative for people who cannot effectively use a handheld calculator, or those seeking a more interactive interface



### **Features:**

- Describes graph shape through audio tones and cues
- Speaking menus
- Scalable visual display
- Keyboard navigation
- Tactile output options
- Advanced matrix functions
- Ability to locate polar coordinates

- Display multiple graphs and find intersections

<http://www.viewplus.com/products/braille-math/AGC/>

## **BAT KEYBOARDS**

- One-handed keyboard interface designed to operate all the functions of a standard QWERTY computer keyboard
- Consists of two seven-key keyboards that are angled and have palm rests. Four keys are for the fingers, three are for the thumb. Letters, characters and symbols are selected by pressing a combination of keys, similar to chords on a piano.
  - Can be used singly (left or right-hand models) or in pairs (dual system) and in conjunction with a standard keyboard, mouse or other input device
  - Very portable with an ergonomic design that reduces strain and fatigue commonly associated with prolonged use of traditional keyboards and keyboard/input device travel



[http://www.infogrip.com/product\\_view.asp?RecordNumber=12](http://www.infogrip.com/product_view.asp?RecordNumber=12)

## **BIG KEYS KEYBOARD**

- BigKeys LX is for individuals who want a full-featured keyboard but need large keys in order to locate and operate the keys
- Includes all special characters found on a standard keyboard, with the exception of the numeric keypad, Scroll Lock, and Pause/Break



<http://www.bigkeys.com/productcart/pc/viewCategories.asp?idCategory=2>

## **BRAILLE KEYBOARDS (80 AND 40 CHARACTER DISPLAYS)**

- Electronic device that connects to a computer to display Braille characters
- The Braille display is made up of a line of 'soft' cells, each with 6 or 8 pins that move up and down to represent the dots of a Braille cell. The display is used to represent a line of text on a computer screen.
- User can 'read' a line of Braille cells by touching the pins of each cell as they pop up. After a line has been read the user can 'refresh' the display in order to read additional lines.



[http://www.tiresias.org/research/devices/braille\\_displays.htm](http://www.tiresias.org/research/devices/braille_displays.htm)

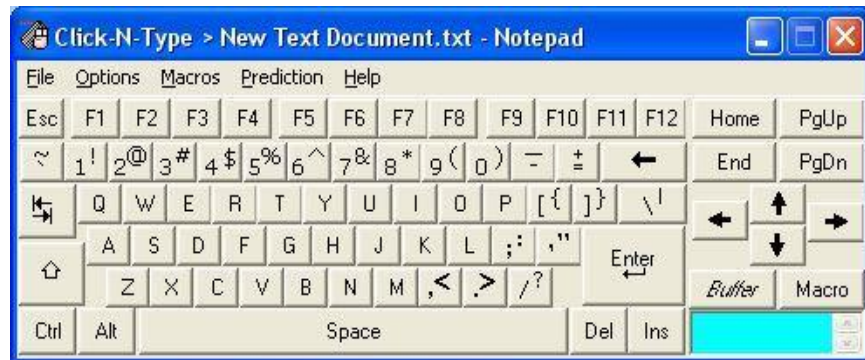
## **CANONSCAN LiDE**



- High resolution flatbed scanner that can scan, copy, or email photos at the touch of a button
- 1200 x 2400 dpi resolution and up to 48-bit depth that delivers stunning color reproduction with more than 281 trillion possible colors
- Z-Lid expansion top lifts high and stays flat for scanning books and magazines
- Portable, able to easily fit into laptop case, and works well with Kurzweil and OpenBook software

<http://www.usa.canon.com/consumer/controller?act=ModelInfoAct&fcategoryid=119&modelid=6623#ModelFeaturesAct>

## CLICK-N-TYPE



- An on-screen virtual keyboard designed for anyone with a disability that prevents him or her from typing on a physical computer keyboard
- As long as the individual can control a mouse, trackball, touch screen or other pointing device, this software keyboard allows you to send keystrokes to virtually any Windows application or DOS application that can run within a window

<http://www.lakefolks.org/cnt/>

## CO:WRITER AND WORD PREDICTION SOFTWARE



- Co:Writer is a word prediction tool that predicts the word a person is trying to type, even if the person spells the word incorrectly
- Innovative features include an optional voice to read words aloud and a word predictor that offers grammatically correct options to students as sentences and paragraphs are typed

[http://www.setbc.org/setbc/topics/topics\\_cow\\_kr.html](http://www.setbc.org/setbc/topics/topics_cow_kr.html)

## CROSS SCANNER: MOUSE SIMULATION PROGRAM



- CrossScanner is a universal way to run all non-adapted software by using 1 or 2 switch(es) or any pointing device
- With the switch(es) plugged into any switch interface, the user is able to perform mouse moves such as clicks,

double clicks, drags, menu operations and enter text (with optional OnScreen keyboard)

- User interface is incredibly intuitive
- All operation is supervisor-controllable to fine tune CrossScanner to the needs of the user

<http://www.rjcooper.com/cross-scanner/index.html>

## DARCI TOO SWITCH INTERFACE BOX – MORSE CODE INPUT

- DARCI TOO is a universal keyboard emulator that features adaptable access, meaning that users can select the access method that works best for them
- Can be controlled by joysticks, switches, matrix keyboards, or communication aids and supplies Morse Code, scanning, matrix keyboard, Darci Code, and communication aid access to all computer functions
- In the Morse Code mode, the display shows the dots and dashes as they are being entered and provides a continuous display of keyboard functions (control, alternate, caps lock, etc.)
- Designed for use by individuals with upper extremity or severe physical disabilities



<http://www.abledata.com/abledata.cfm?pageid=19327&top=15813&productid=84445&trail=0&discontinued=0>

## **DOCUPEN HAND HELD SCANNERS**



- Portable handheld scanner that operates on batteries
- Capable of storing up to 100 pages into memory and takes approximately 4 to 8 seconds per second
- Able to scan a full page width and therefore scans the entire page including text and graphics in just 4 seconds

<http://planon.com/index.php>

## **DRAGON NATURALLY SPEAKING**

- Software program that uses the power of speech to create, format and edit documents as well as to launch and control most desk top applications
- Powerful productivity and can also be fully customized
- Speak directly into Microsoft Word and creates Word documents by voice.
- Dictate into almost any Windows application and see your words appear immediately
- Plus there are so many more possible uses of Dragon that you will discover once you have taken the 5 minutes to set up your voice profile



<http://www.nuance.com/naturallyspeaking/>

## DUXBURY BRAILLE TRANSLATOR



- Duxbury Translator Software (DBT) is the industry standard for Braille translation
- Simple to use - beginners learn in just minutes
- Use DBT to import MS Word files and turn them into Braille at the touch of a button
- Used by most of the major Braille production centers throughout the world

<http://www.duxburysystems.com/dbt.asp?product=DBT%20Win>

## EAROBICS SOFTWARE

- Earobics is an award winning research-based program that builds phonological awareness, auditory processing and phonics skills developed by language-learning and literacy specialists
- Teaches the skills necessary to learn how to speak, read and spell
- Uses the automated data collection tools to monitor progress, print reports and guide remediation
- Automatically generates IEP-formatted goals for each activity



<http://www.donjohnston.com/products/earobics/index.html>

## ERGONOMIC KEYBOARDS

### **Split Keyboard**

- Alternative keyboard that allows for more comfortable typing and proper wrist support and reduces the strain on the user's hand and wrist by straightening and aligning them with the directions of the keys
- Fixed angle design splits the alphanumeric keys at a fixed angle and they slightly tent the keyboard
- Adjustable angle design splits the alphanumeric keys at an angle that can be adjusted by the user and they slightly tent the keyboard
- Completely split designs separate the left and right hand portions of the keyboard



### **Scooped Keyboard**

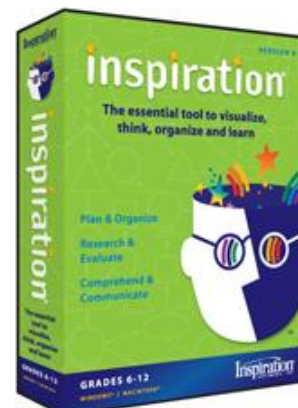
- The keys on these keyboards are arranged in a bowl-like shape, bringing them closer together
- Reduces hand fatigue when typing by shortening the distance fingers must reach between keys



<http://www.kinesis-ergo.com/>

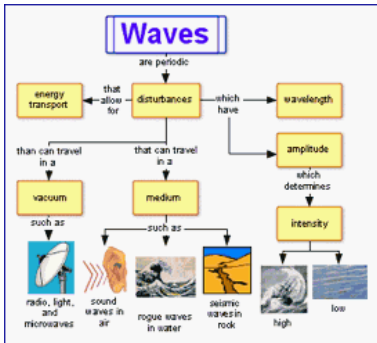
## INSPIRATION

- Inspiration is a visual thinking and learning tool
- An expanded selection of 120+ cross-curricular templates in language arts, social studies, science, planning and thinking
- Students build graphic organizers to work with ideas and present information - teaches students to clarify



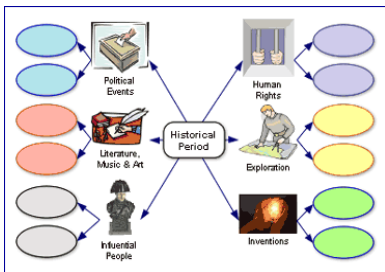
their thinking and to process, organize and prioritize new information

### Concept maps



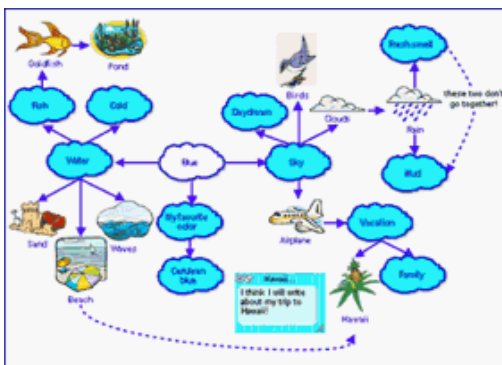
- Two or more concepts are linked by words that describe their relationship in a visual display
- Provides alerts when errors are made (misdirected links or wrong connections) to provide feedback

### Webs



- Visual maps to show how different categories of information relate to one another
- Provide structure for ideas and facts and give students a flexible framework for organizing and prioritizing information
- Links from the center connect supporting details or ideas with the core concept or topic
- Organize information for writing (pre-writing), as well as to analyze stories and characterization

### Idea Maps



- This visual learning technique stimulates students to generate ideas, follow them through and develop their thoughts visually
- Fast, five-minute exercises in word and idea association connect keywords, symbols, colors and

graphics to form nonlinear networks of potential ideas and thoughts

## INTELLIKEYS ADAPTIVE KEYBOARD

- IntelliKeys USB is an alternative keyboard for children and adults with visual, physical, or cognitive disabilities that have difficulty utilizing a standard keyboard.
- The standard system includes one USB cable and six plastic standard overlays: alphabet, basic writing, QWERTY, web, math access, and mouse access. A set-up overlay is also included to adjust the IntelliKeys keyboard for special needs and customized individual settings.
- The overlays allow users to work with writing, math, and drawing programs along with the Internet and email. They enable users to access standard learning software and are easy to see, touch, and understand. Custom overlays can be made using the Overlay Maker 3 software.
- IntelliKeys can be used with Classroom Suite, Overlay Maker, and IntelliTalk software to enhance its function as a programmable keyboard and communication tool



<http://www.intellitools.com/default.aspx>

## INTELLITOOLS CLASSROOM SUITE

- Software that combines direct instruction with a flexible tool environment to help students achieve mastery in reading, writing and math
- Provides students with explicit instruction, practice, and assessments that allow teachers to gauge progress and individualize instruction



- IntelliTools Classroom Suite 4 features:
  - Reading instruction aligned with national standards
  - Math instruction targeting number sense and automaticity
  - Writing templates across many genres

- Creativity tools for whole class instruction and student presentations
- Early Learning activities for emergent learners

<http://www.intellitools.com/default.aspx>

## **JAWS SCREENREADER**

- JAWS (Job Access with Speech) is a screen-reading program that gives users voice output access to computer programs for those who are blind or have low vision
- Works with most speech synthesizers and includes Eloquence, a multilingual synthesizer that supports 11 languages
- Features include dual cursor design, macro keys, audible and visible Lotus 1-2-3-style menus, ability to use the keypad for single handed operation, windows for selective screen reading, screen enhancements to recognize monochrome or color, variable voice configurations, and a "help mode"



### **FSReader**

- Jaws now reads the entire line of text by performing a Say Line command when specific text that you are searching for in a DAISY book is found
- Braille now tracks correctly with the audio narration when reading a DAISY book with FSReader
- Scripts have been created for tcConference software, which is Web conferencing software that supports Freedom Scientific online training sessions

[http://www.freedomscientific.com/fs\\_products/JAWS\\_HQ.asp](http://www.freedomscientific.com/fs_products/JAWS_HQ.asp)

## JOUSE 2

- An advanced joystick-operated USB mouse that is controlled with your mouth.



- Move the precision joystick with your mouth, cheek, chin or tongue to shift the mouse cursor wherever you want. The further you move the joystick, the faster the cursor travels. You can perform right-click, left-click and double-click actions with the sip and puff switches built into the Jouse 2.
- It supports four user-selectable versions of Morse Code text input with Dual-tone audio via the sip-and-puff controller.
- It will mount to almost any desktop. It also includes mounting options for ancillary equipment such as microphones, switches and Web-cams. Compusult also offers custom Jouse 2 mounting hardware, switch controls, and interfaces for many special needs.
- The Jouse 2 comes with two types of mouth pieces; a disposable type for multiple users and a rigid, more comfortable type in two different lengths for full-time users.
- The Jouse 2 comes with built-in support for two external switches. If the user cannot perform a sip or puff function (e.g., if they're on a respirator), they can use a switch as an alternative.

## JOYSTICK-TO-MOUSE

- Software program that allows any joystick to point and click just like a mouse
- Allows the joystick to position the mouse cursor and enables the joystick buttons to operate as mouse buttons
- Provides computer access and control via joystick to physically challenged users on a Windows platform



- Joystick-To-Mouse has been widely accepted by children, recreational users, and other users who prefer the joystick over the mouse or trackball

<http://www.joystick-to-mouse.com/joy2mse/j2m.htm>

## **JULIET PRO BRAILLER**

- Juliet Pro includes an extra-wide embossing line in order to Braille two sides at once
- Comes with Single Sheet Tractors and ET Speaks, an innovative speech system, as standard equipment. The two latter additional features enable your Juliet Pro to adapt to an even larger range of applications.
- Puts Braille easily on materials without the customary tractor holes of Braille paper
- Dynamic Braille Scaling allows for different Braille sizes even within a single document



<http://www.braille.com/juli2.htm>

## **KURZWEIL 1000**



**Kurzweil Educational Systems**

A Cambium Learning™ Company

- Kurzweil 1000 is award-winning software that makes printed or electronic text readily available to people who are blind or visually impaired
- Works on your personal computer in conjunction with a scanner to convert the printed word into speech
- Provides access to most printed forms and presents them with the fields, labels, boxes, and text areas in the appropriate reading order. You can fill in the fields, edit, save, and print. Handwritten signature can easily be written into a form, or any Kurzweil 1000 document, once it's scanned into your computer.
- Able to send files to Braille note takers and embossers as well as portable devices such as DAISY and MP3 audio player

- **State-of-the-Art Speech Options:** Clear, natural-sounding VoiceText voices from NeoSpeech and ETI-Eloquence voices from Nuance deliver the highest quality text-to-speech (TTS)
- **Create Documents and Work with Tables:** Writing and editing documents are simple with our audible text editor, built-in dictionaries, thesaurus, and spell checker. In addition, proofreading keystrokes for reading one word at a time include punctuation and capitalization reporting. You can also create, edit, and read tables with the same ease, plus convert blocks of text to tables and vice versa.
- Kurzweil 1000 combines accessibility, communication and productivity tools to ease and enhance reading, writing and learning experiences

[http://www.kurzweiledu.com/products\\_k1000.asp](http://www.kurzweiledu.com/products_k1000.asp)

## **KURZWEIL 3000**

- This program is a comprehensive reading, writing and learning software solution for any struggling reader, including individuals with learning difficulties, such as dyslexia, attention deficit disorder or those who are English Language Learners
- **Access to Any Curriculum** - The software can access virtually any information, whether it is printed, electronic, or on the Web.
- **Study Skills** - With the aid of visual and auditory feedback, the software helps students keep up with assigned reading, learn critical study skills and successfully complete writing projects and tests.
- With its robust study skills tools, Kurzweil 3000 facilitates active reading including: highlighting, text circle tools, annotations, Bookmarks, Voice Notes and Extract in order to create outlines, study guides, or word lists – all things that can improve their reading comprehension and retention.



- **Decoding Support** - It then reads the words aloud to the student in clear, humanlike, synthetic speech, while a patented dual highlighting feature adds visual reinforcement.
- **Writing and Self-Editing Tools** - As students type, the software speaks each letter or word, so they can quickly recognize and correct spelling mistakes
- **Independent Test Taking** – With Kurzweil 3000, students can independently complete worksheets, classroom tests and standardized tests with greater confidence and fewer mistakes

### **KURZWEIL 3000 PROFESSIONAL COLOR**

- In addition to color scanning capabilities, the latest version of the software provides new visual and auditory study and reading features that enhance Kurzweil 3000's multi-sensory approach to learning
- Allows color documents to be scanned and displayed on-screen just as they appear in the original books and hard copy materials used in the classroom

<http://www.kurzweil.edu.com>

### **MADENTEC TRACKER AND SCREEN DOORS**

#### **Tracker Pro:**

- TrackerPro is a computer input device that takes the place of a mouse for people with little or no hand movement
- Simply plug it in and it works just like a mouse (no additional software required)
- Anything that can be done with a regular hand mouse can be done by using TrackerPro (in conjunction with one of many clicking solutions)



<http://www.madentec.com/products/tracker-pro.php>

## Screen Doors

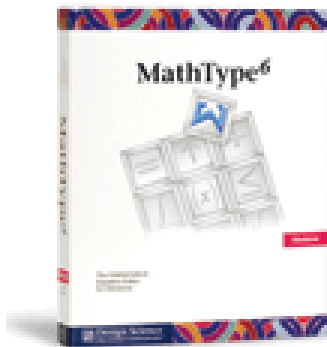
- Instead of pushing keys on a real keyboard, simply point and click on a picture of a keyboard on your computer screen
- Acts just like the real keyboard typing directly into any application
- A list of predicted words actually guesses what you are typing to help speed entry



<http://www.madentec.com/products/screendoors.php>

## MATHTYPE

- A powerful interactive equation editor for Windows and Macintosh
- Provides templates for equations which apply mathematical spacing rules automatically as you type
- Add or delete matrix/table rows and columns
- Save common equations and expressions for reuse with just a click or a keystroke
- Contains customizable function recognition, three toolbar viewing sizes, and international character and keyboard support
- Works with many websites and applications, including Microsoft Office



<http://www.dessci.com/en/products/mathtype/features.htm>

## **MLS STUDENT ADDITION CLASSROOM CAMERA**

- This is a video magnifier that connects to a laptop to magnify the blackboard and overhead presentations or items that the individual wants to look at on the desktop
- The individual can also use the Magnilink Student to take snapshots or video clips of the objects they are pointing it at
- Can be used for both reading and distance viewing
- The MLS Student Addition can be connected to both laptop and desktop computers and the connection is easily done through USB 2.0. The camera picture is presented in a Windows application, and both the size and position of the window can be adjusted for different split screen modes. All system functions are handled directly from the computer keyboard.
- It is also possible to connect the MLS Student Addition directly to a PC monitor or TV set without using a computer. The functions are then handled through a remote control.



<http://www.virtualvisiontech.com/products.cfm?viewall=24>

## **MOUSE MOVER INTERFACE BOX**



- Allows any five individual switches to produce up, down, left and right cursor movements, plus mouse button action
- No software drivers are required

[http://www.tfeinc.com/shop/index.php?\\_a=viewProd&productId=534](http://www.tfeinc.com/shop/index.php?_a=viewProd&productId=534)

## ORION TI-36 TALKING SCIENTIFIC CALCULATOR

- Based on the popular TI-36X calculator with identical mathematical features and clear high quality natural speech feature
- Keys speak when pressed and display can be spoken at any time or speech feature can be turned off
- Special ergonomic design consists of large, functionally zoned keys, including backspace/correction key
- Contains over 127 scientific functions, including 1 & 2 variable statistics, trigonometry, and unit conversion



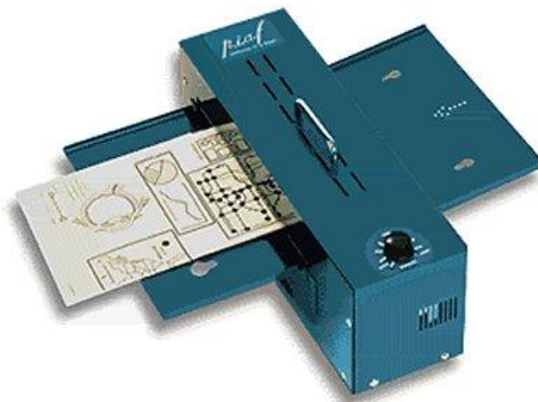
<https://www.lssproducts.com/product/3914/educational-products>

## PICTURES IN A FLASH (PIAF)

- Produces high quality tactile images on specially treated swell paper
- Users are able to draw, print, or photocopy pictures onto the swell paper and pass it through the PIAF device.

The heat from the drawing causes the lines on the paper to swell and the drawing can then be read with the fingers.

- Ideal for communicating graphics and Braille to individuals who are blind or visually impaired



[http://www.humanware.com/enusa/products/blindness/braille\\_embossers\\_and\\_writers/details/id\\_94/piaf.html](http://www.humanware.com/enusa/products/blindness/braille_embossers_and_writers/details/id_94/piaf.html)

## PULSE PEN

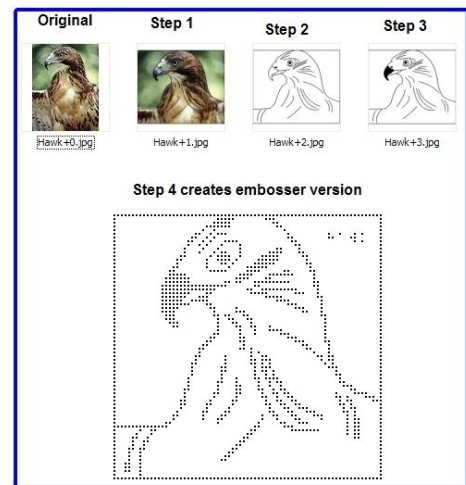


- Records and links audio to what you write
  - Tap on your notes or drawings with the tip of your Pulse Pen to hear what was said while you were writing
  - Automatically captures everything as you write and draw
- 
- In a matter of seconds users are able to transfer notes to their computer, organize them, and even search for words within your notes.
  - Find what you want in seconds, transform your notes and audio into interactive movies, and upload your creations online for everyone to see, hear and play.

<http://www.livescribe.com/cgi-bin/WebObjects/Catalog.woa/wa/getItem?id=APA-00002>

## QUICKTAC

- This is a program for creating Braille tactile graphics
- Provides a fast and simple way to create tactile graphics that can be inserted into your DBT document, printed or embossed for use by blind, low vision and other special educational uses
- A free software package by Duxbury lets you draw simple line graphs and geometric figures and import them to a Duxbury file and emboss at once



<http://www.duxburysystems.com/product2.asp?product=QuickTac&level=free&action=up>

## **READ AND WRITE GOLD**

- This program has a wide variety of reading and writing features
- Writing features include word prediction and completion, spell checkers, homonym dictionaries, an interactive dictionary and reference guides.
- Reading features include a screen reader, scanning and reading functions, and features that will talk as the user types

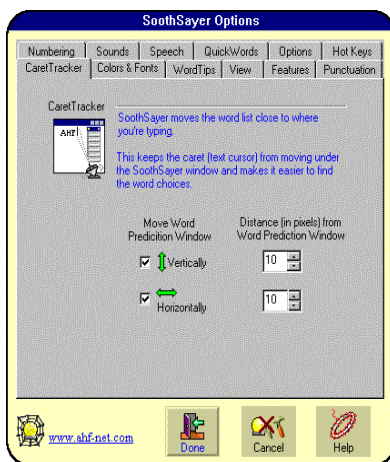


<http://www.enablemart.com/Catalog/Writing/Read-Write-GOLD>

## **SOOTHSAYER SCAN PLUS WITH REACH VIRTUAL KEYBOARD**

The SoothSayer Scan Plus is a software bundle that includes the SoothSayer Word Prediction and the ScanBuddy software programs.

### **SoothSayer Word Prediction**



- Software program that increases typing speed and accuracy. Includes built-in main dictionary of over 11,000 words.
- Custom user dictionary allows user to add words that are not included in main dictionary but are used often.
- In addition to word prediction, it offers abbreviation expansion and sentence completion (text up to 500 characters long).

<http://www.ahf-net.com/sooth.htm>

## ScanBuddy



- Allows user to click, double click or drag anywhere in Windows with one switch, two switches or hot keys on keyboard to increase scanning speed and accuracy
- Uses row/column scanning to identify a specific area on the display and then line scanning to select a specific point
- Can be used alone, with REACH Interface Author, or with SoothSayer Word Prediction

<http://www.ahf-net.com/Scanbuddy.htm>

## Reach Interface Author

- On-screen keyboard software with an assortment of assistive technology tools designed to help individuals use a computer more easily and augment their speech if needed
- Includes word/sentence completion, speech augmentation and scanning keyboard options
- Automatic "windows management" (automatically resize, reposition, and bring windows to the top when you need them)
- Contains a multimedia keyboard authoring system, 250+ built-in keyboards, and 10 built-in assessment tool



Copyright (c) Applied Human Factors, Inc. 1997-2005

## **SWITCHES AND SWITCH MOUNTING DEVICES**



- Switches are a common solution for users with mobility disabilities who need to use computers or other electronic devices, but have difficulty with the physical interface
- A specially-designed switch may be composed of a single button, merely a few buttons, a sensory plate, or another of the whole host of adaptive switches available to allow for easier manipulation than a standard keyboard
- May also be touch-free, relying instead on motion sensors, brain activation, or a sip and puff mechanism
- Aside from simplifying input devices, switches can also be used as developmental aids, teaching children (or adults) how to interact with their external environment



## **SWITCH ADAPTED MOUSE**



- Switch-Adapted optical mouse is a standard mouse with two standard 1/8" plugs for two switches
- Its left and right mouse clicks have been adapted so that you can use a switch for activation

## TALKING TYPING TEACHER

- An interactive audio program for Windows that teaches keyboarding skills for students with visual disabilities

- All directions, posture tips, drills and games are narrated entirely with pre-recorded human dialog (as well as shown on-screen) -- no synthesized speech!



- Full support for large-print users, multiple student access, and the ability to create customized lessons

<http://www.braillebookstore.com/view.php?C=Talking+Typing+Teacher+for+Windows>

## TASH USB MINI KEYBOARD

- The USB Mini is a small alternative QWERTY keyboard that plugs directly into a computer and allows the user to control both keyboard and mouse functions
- It can be used independently or in parallel with the standard keyboard



- Keyboard keys are closely spaced for easy access and auditory feedback is provided when a key is pressed
- Mouse Mode Key feature allows user to maneuver mouse in all directions and have access to right and left click, double click, and drag functions.
- Adjustments can be made for keyboard response rate, key repeat rate, mouse tracking speed and more
- Designed to accommodate limited range of motion and is beneficial for individuals with difficulty maneuvering a standard mouse

<http://www.ablenetinc.com/Store/tabid/205/Default.aspx?CategoryCode=43>

## VICTOR READER STREAM

- The Victor Reader Stream is a compact and portable device that allows users to download and listen to their favorite books and MP3s virtually anywhere



- Can accept up to an 8GB SD memory cards to store books, e-text files, music, voice recordings and audio bookmarks, making this reader stream ideal for all ages
- Equipped with easy to use keys, users are able to navigate through books by chapter, section, and page while the built-in microphone enables users to record notes or comments
- Helps individuals navigate through complex books with a simple touch of a button

<http://www.activeforever.com/p-2290-victor-reader-stream-by-humanware.aspx>

## VICTOR READER VIBE AND WAVE

The updated version of the Victor Player includes both the Victor Reader VIBE and the Victor Reader Wave

### **Victor Reader VIBE**

- The smallest, most affordable DAISY player ever designed for the visually impaired and print-disabled
- Victor Reader VIBE is both a sophisticated digital talking book player and an audio and MP3 CD player that can be taken with you everywhere
- Advanced functionalities allow users to read highly structured books, such as school manuals and reference books, as well as novels and magazines



## Victor Reader Wave

- Offers increased performance over its companion product, Victor Reader VIBE, including faster book navigation and improved MP3 CD features



<http://www.floridareading.com/victorreader.shtml>

## WAFER SWITCH



- Contains five low profile membrane switches, each is 5.7cm in diameter
- Membrane switches are slightly recessed and printed with a different arrow direction for cursor control or joystick emulation

<http://www.spectronicsinoz.com/product/wafer-multiple-switch-usb-or-9-pin>

## WIVIK ON-SCREEN KEYBOARD AND SCANNING SYSTEM

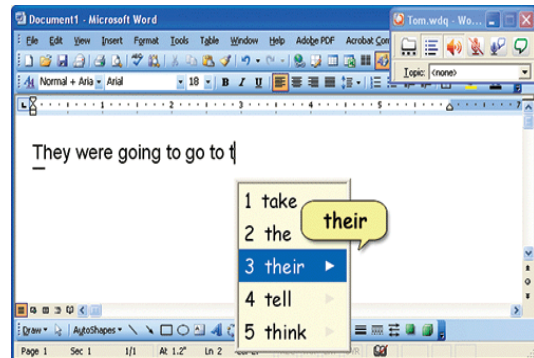


- WiVik is an onscreen keyboard that allows you to use a pointing device, automatic or switch scanning to select keys to type into any Windows application
- Select predicted words or use abbreviation-expansion to reduce keystrokes
- The keyboards are available in 22 languages and over 50 keyboards are included within the package

<http://www.wivik.com/>

## WORD Q WRITING SOFTWARE

- Software tool used along with standard writing software that suggests words for you to use and provides spoken feedback to help you find mistakes
- Benefits users of all ages who have problems writing and editing, particularly those with learning disabilities.
- State-of-the-art word prediction suggests words when you have trouble spelling or choosing the right word
- Program contains a special text-reading mode helps you proofread
- Text can be highlighted and read aloud within the Microsoft Word, WordPad, Notepad or Outlook applications



<http://atestore.enablemart.com/productDetail.aspx?pid=104&dept=12&store=10>

## WORD TALK



- Software that reads text aloud
- Beneficial for people with reading and writing difficulties

<http://www.wordtalk.org.uk/Home/>

## WRITE:OUT LOUD

- An award-winning talking word processor and writing software program
- Write Out Loud features a number of purposeful writing



supports:

- Natural sounding speech feedback; gives students the power to self-evaluate word choice, sentence fluency and organization
- The Franklin Talking Spell Checker and Dictionary provides the most accurate spelling suggestions and clearly written definitions students understand
- The Homonym Checker quickly searches a document for homonyms and offers definitions for all the alternatives
- Formative data collection helps teachers identify student needs for informed remediation
- Teachers may add locked text to an assignment to give directions and extra help to students
- The bibliographer helps students create their own bibliography using dozens of source types
- Mark for Deletion strikes out selected text and changes the color of that text to red

[http://www.donjohnston.com/products/write\\_outloud/index.html](http://www.donjohnston.com/products/write_outloud/index.html)

## **ZOOMTEXT**



- Zoomtext provides magnification for the visually impaired and can be used while navigating the internet, creating a document, or emailing friends
- **Web Finder** Makes it easy to find links on any web page. Once the desired link is found, it can be executed (clicked on), scrolled to, or

read from with ZoomText's AppReader feature

- **Desktop Finder** Helps you find and open programs and documents on your desktop, including items in the Programs and My Documents folders, and the Control Panel
- **Line Zoom Window** Magnifies a single line at a time, while automatically adjusting to the height of text in your documents
- **Fractional magnification** New powers of 1.25x, 1.5x and 1.75x let you get more information on the screen. Now a 2.5x magnification for users who are in between 2x and 3x. Now magnification of up to 36x for high resolution screens.
- **Support for PDF documents** In Windows XP, ZoomText's AppReader can now read and highlight PDF documents opened in Adobe Reader 6.0.1 or later
- **Human Quality Speech** - Applications and documents can now be read with NeoSpeech synthesizers designed to sound like a human voice
- **Application Settings** - Adjusts settings as the user switches applications. User can save the settings for each application and ZoomText restores them automatically.
- **Text Finder** - The new Text Finder makes it easy to locate words and phrases in any program or document window
- **Reading Zones** – Allow user to quickly see and hear selected locations in any application and eliminates need for scrolling

<http://www.techno-vision.co.uk/zoomtext.htm>