



<b>Program:</b> MPA Program	<b>Completed By:</b> Vera Vogelsang-Coombs & Rachel Singer
<b>Department:</b> Urban Studies	<b>Date:</b> May 31, 2006

**Goal 1:**  
Students will assume the challenges of public service by having a substantive foundation in general public administration (cited as the generalist outcome).

Outcomes	Research Methods	Findings	Review	Actions
Students will understand theories of public administration.	Student performance in PAD 600, 604, PSC 605/PAD 617 as per rubric.  For 2005 calendar year.	PAD 600-N=72 65.28% Exemplary 31.94% Satisfactory 1.39% Marginal 1.39% Unsatisfactory  PAD 604 N=76 69.74% Exemplary 28.95% Satisfactory 1.32% Unsatisfactory  PSC 605/PAD 617 N=67 67.16% Exemplary 26.87% Satisfactory 5.97% Marginal	MPA faculty reviewed CY 05 data April 2006.	See Table 3.
Students will apply constitutional and ethical values of public administration.	Student performance in PAD 634 and 631 as per rubric.	PAD 634 N=31 77.42% Exemplary 22.58% Satisfactory  PAD 631 N=11 45.45% Exemplary 27.27% Satisfactory 27.27% Marginal	MPA faculty reviewed CY 05 data April 2006.	None at this time.



## 2005 Calendar Year Assessment Report

Cleveland State University

<b>Goal 1:</b> continued				
Outcomes	Research Methods	Findings	Review	Actions
Students will know how to apply principles of public personnel administration.	Student performance in PAD 630 as per rubric.	PAD 630 N=72 76.39% Exemplary 15.28% Satisfactory 2.78% Marginal	MPA faculty reviewed CY 05 data April 2006.	None at this time.

<b>Goal 2:</b> Students will assume the challenges of public service by having methodological skills in general public administration (cited as the methodological outcome).				
Outcomes	Research Methods	Findings	Review	Actions
Students will understand the fundamentals of quantitative methods.	Student performance in PAD 501 and PAD 601 as per rubric.	86% of 501 students pass 601 in 2005	MPA faculty reviewed CY 05 data April 2006.	None at this time.
Students will use statistical analysis effectively.	Student performance in PAD 601 via rubric.	PAD 601 N=86 39.53% Exemplary 40.70% Satisfactory 16.28% Marginal 3.49% Unsatisfactory	MPA faculty reviewed CY 05 data April 2006.	None at this time.
Students will assess the economic and revenue dimensions of public administration.	Student performance in PAD 603 via rubric.	PAD 603 N=66 24.24% Exemplary 69.70% Satisfactory 6.06% Marginal	MPA faculty reviewed CY 05 data April 2006.	See Table 3.
Students will know how to lead a strategic planning process.	Student performance in PSC/PAD 635 via rubric.	PSC 635 N=18 100% Exemplary	MPA faculty reviewed CY 05 data April 2006.	See Table 3.



## 2005 Calendar Year Assessment Report

Cleveland State University

**Goal 3:**

Students will develop specialized skills in on of the Program's substantive area: (1) public management, (2) economic development, and (3) health care administration (cited as the specialization outcome).

Outcomes	Research Methods	Findings	Review	Actions
<p>Students will defend their problem analysis, using presentation technology, before a panel of MPA faculty members and practitioners.</p>	<p>This panel will use a special rubric that assesses students on the program's six learning goals.</p>	<p>Thirteen randomly selected capstones drawn from CY 2005 were evaluated. The panel of faculty and practitioners used a special rubric designed to assess student performance along nine dimensions. The scale ranged from 1 to 5 (high).</p> <p>1: written communication: mean of 4.64/s.d. of .5802/variance of .3366</p> <p>2: Project identification: mean of 4.56/s.d. of .7938/variance of .63</p> <p>3: MPA core ideas: mean of 4.48/s.d..7133/variance of .5088</p> <p>4: Information Gathering: mean of 4.52/s.d. of .7484/variance of .5601</p> <p>5: Analysis: mean of 4.39/s.d. of .8098/variance of .6558</p> <p>6: Project identification: mean of 4.21/s.d. of .8886/variance of .7896</p> <p>7. Learning: mean of 4.47/s.d. of .7510/variance of .5640</p> <p>8. Quality of Oral Presentation: mean of 4.56/s.d. of .7015/variance of .4921</p> <p>9. Response to Questions: mean of 4.62/s.d. of .6741/variance of .4545</p>	<p>MPA faculty reviewed CY 05 data April 2006.</p>	<p>None at this time.</p>



## 2005 Calendar Year Assessment Report

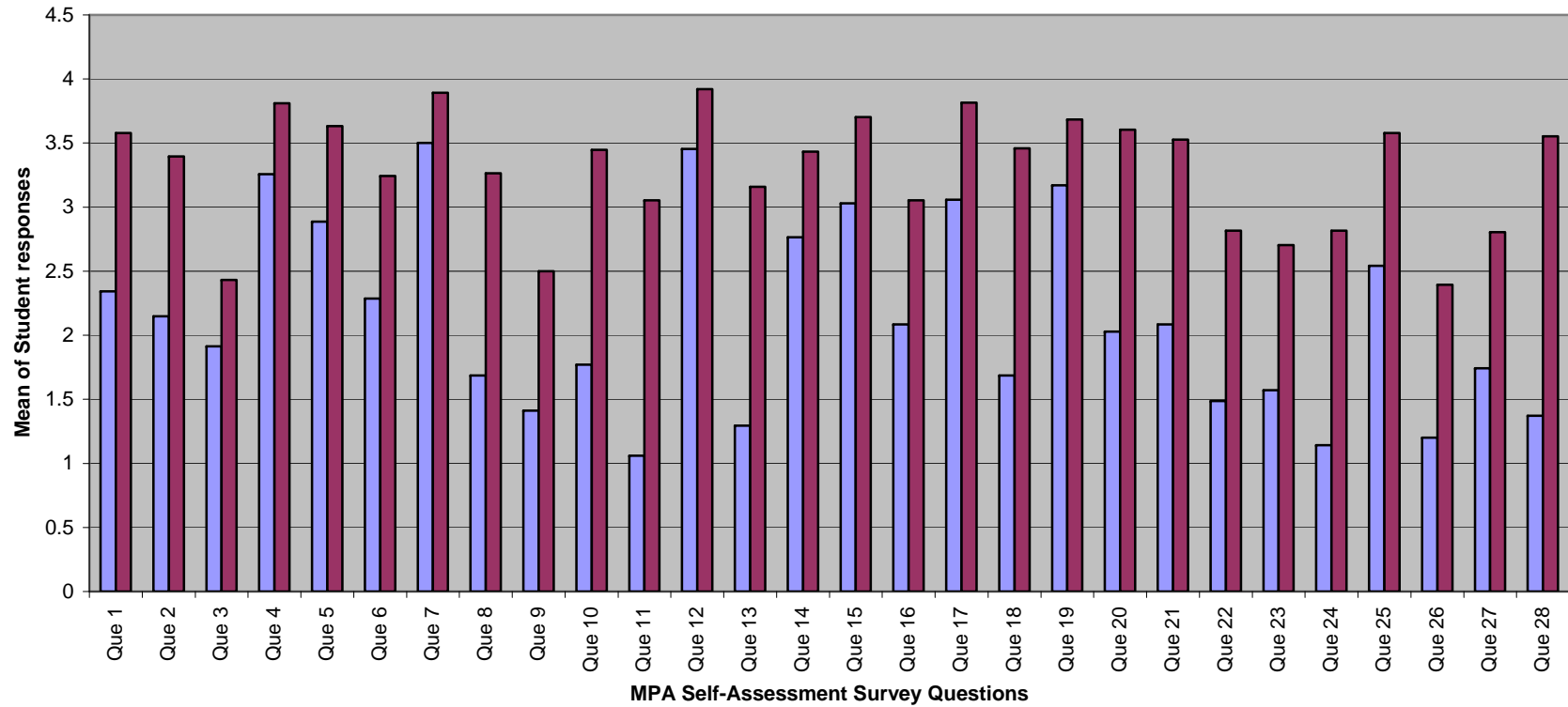
Cleveland State University

<b>Goal 3:</b> continued				
<b>Outcomes</b>	<b>Research Methods</b>	<b>Findings</b>	<b>Review</b>	<b>Actions</b>
Students will prepare a written problem analysis.	MPA faculty used a special rubric designed to assess student performance, based on the 6 MPA learning goals. The rubric used a seven-point scale, from 0 to 6. See MPA Program Assessment plan. Thirteen randomly selected capstones drawn from CY 2005 were evaluated.	Mean for goal 1=4.57 Mean for goal 2=3.86 Mean for goal 3=3.93 Mean for goal 4=4.11 Mean for goal 5=4.14 Mean for goal 6=3.93  100% of capstone students completed the course successfully in CY 2005.	MPA faculty reviewed CY 03-05 data (see Table 2) April 2006.	Noted in Tables 1 and 3.

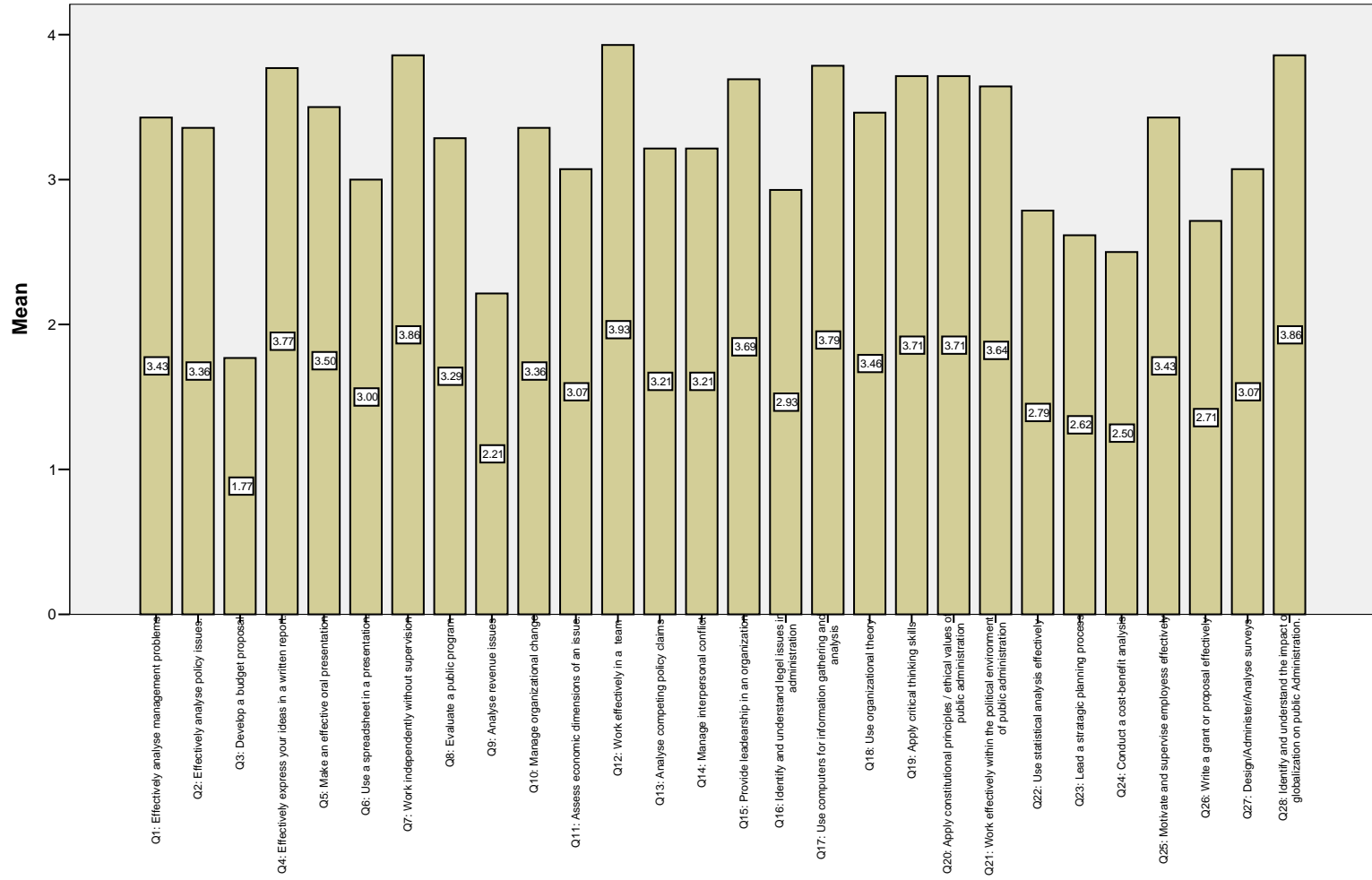
<b>Goal 4:</b> The MPA Program uses student feedback to improve the program.				
<b>Outcomes</b>	<b>Research Methods</b>	<b>Findings</b>	<b>Review</b>	<b>Actions</b>
Students will achieve the educational goals of the MPA Program.	Self-assessment surveys.	Comparative Data from CY 2004 & CY 2005 self-assessments.  Mean comparison of new & graduating students showed improvements on 28 dimensions.  See attachment 1.	MPA faculty reviewed data April 2006. Least improvement noted in budgeting.	See table 3.
Students will evaluate their MPA Program experience.	End of Program SWOT Analysis.	CY 05 Strengths, Weaknesses, Most and Least Benefit Received, and Program Improvements compiled	MPA faculty reviewed the qualitative data April 2006.	See table 3.
Students will evaluate their MPA Program experience.	Student exit surveys.	Comparative data 2000 to 2005	MPA faculty reviewed data April 2006.	No action at this time.

**Attachment 1: MPA Student Self-Assessment (Calendar Years 2003-2006)**  
**Mean Comparison between New students and Graduating students**

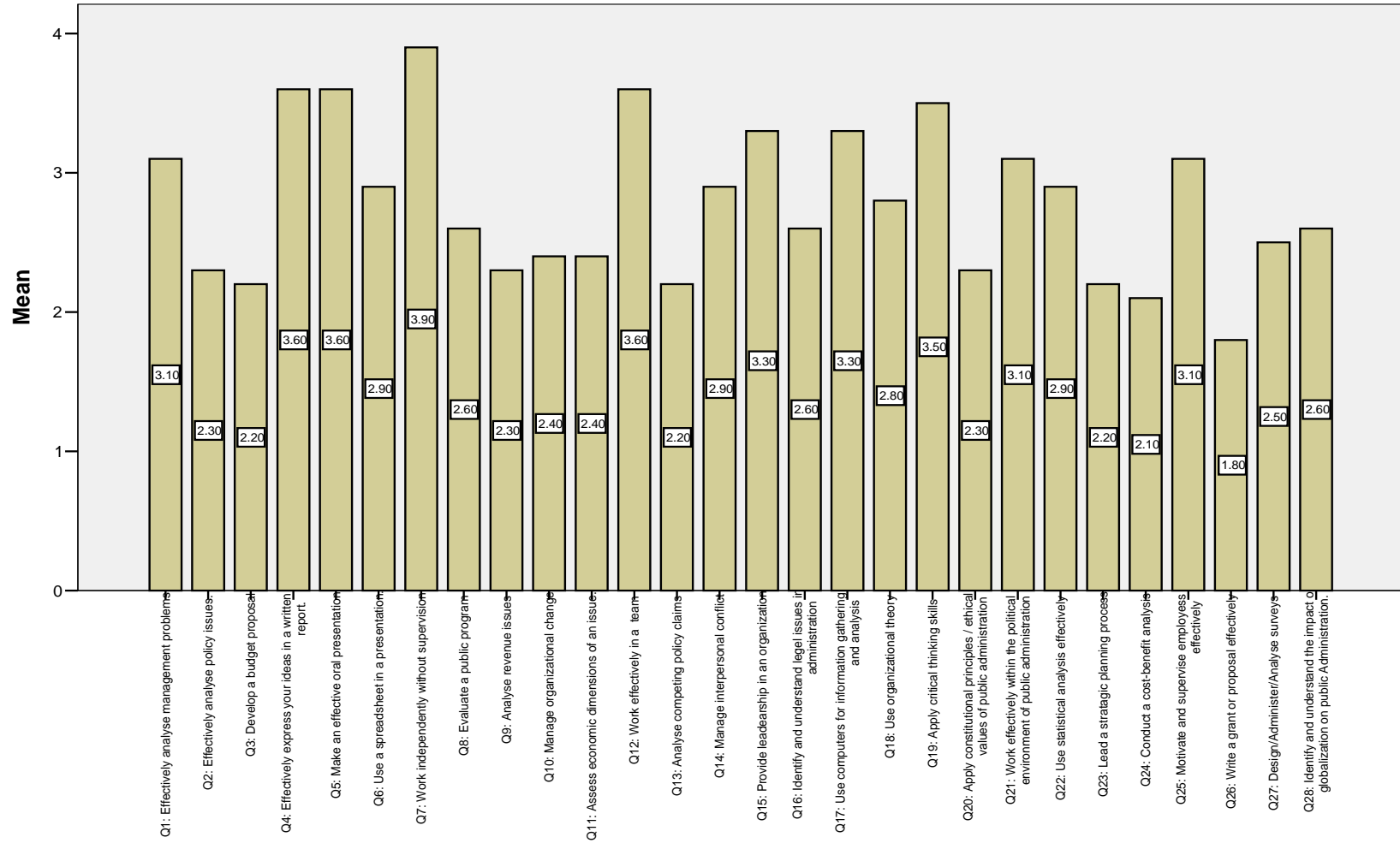
■ Mean, New Students (N = 35)      ■ Mean, Graduating Students (N=70)



### MPA Graduating Student's Skill Assessment CY 2005



## MPA Graduating Student's Skills Assessment CY 03-04



MPA Graduating Student's Skills Assessment, CY 03-04 - CY 05

